

Sinclair  Hammelton

ASKING PRICE

£675,000

Northlands Avenue

Orpington, BR6 9LY

PROPERTY SUMMARY

OPEN DAY SATURDAY 7TH FEBRUARY BY APPOINTMENT ONLY

Sinclair Hammelton are delighted to present to the market this beautifully presented three bedroom semi detached house on Northlands Avenue.

On the ground floor the property offers a spacious front lounge, downstairs WC and a stunningly renovated, modern kitchen diner with bifold doors looking out onto the garden.

The first floor offers two double bedrooms with built in storage, a single bedroom and the family bathroom.

Externally, Northlands Avenue boasts a large driveway large enough for multiple cars. To the rear you will find the large, garden split over multiple levels, with separate space for dining, BBQ and the lawn. The property also benefits from a fully insulated home office with electrics.

Northlands Avenue is perfectly located for all local amenities. It is just 0.8 miles from Orpington Station which offers great links into all mainline stations. For schools, the property is within walking distance to Tubbenden School (0.3

3



1



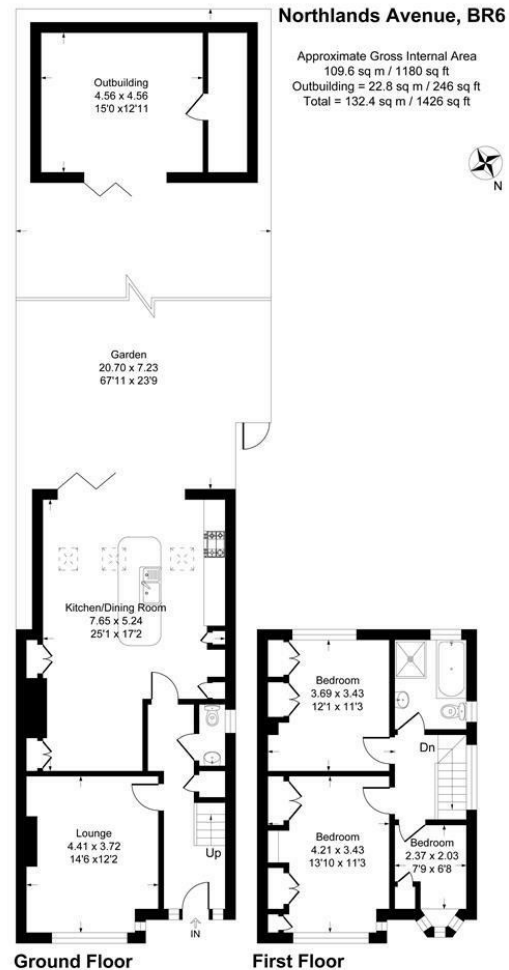
2











This plan is for layout guidance only. Not drawn to scale unless stated. Windows and door openings are approximate. Whilst every care is taken in the preparation of this plan, please check all dimensions, shapes and compass bearings before making any decisions reliant upon them.
 Produced by Planpix

LOCAL AUTHORITY

TENURE

EPC RATING:

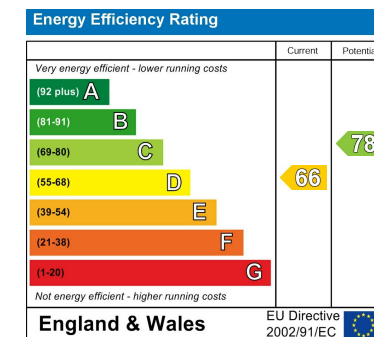
D

COUNCIL TAX BAND

E

VIEWINGS

By prior appointment only



Agents Note: Whilst every care has been taken to prepare these particulars, they are for guidance purposes only. All measurements are approximate and are for general guidance purposes only and whilst every care has been taken to ensure their accuracy, they should not be relied upon and potential buyers/tenants are advised to recheck the measurements

Sinclair Hammelton

OFFICE ADDRESS

1 Chatsworth Parade
 Kent
 BR5 1EF

OFFICE DETAILS

01689 806 770
 infopw@sinclairhammelton.co.uk