

ASKING PRICE

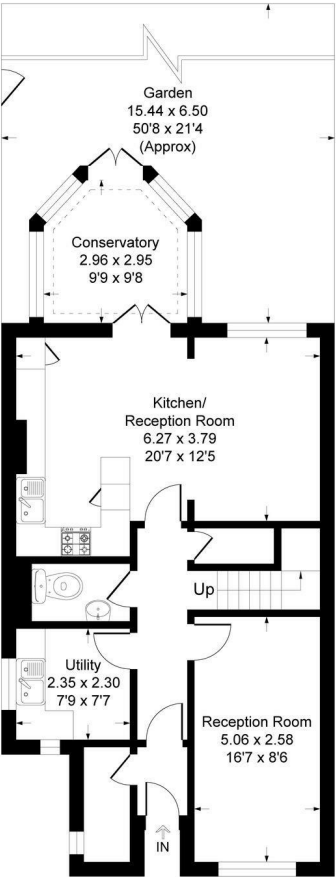
**£650,000**

**Woodview Close**

Orpington, BR6 8PT



EPC RATING: C    COUNCIL TAX BAND: E



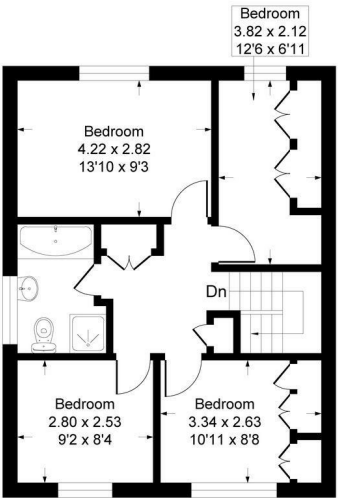
Ground Floor



This plan is for layout guidance only. Not drawn to scale unless stated. Windows and door openings are approximate. Whilst every care is taken in the preparation of this plan, please check all dimensions, shapes and compass bearings before making any decisions reliant upon them.  
Produced By Planpix

## Woodview Close, BR6

Approximate Gross Internal Area  
124.0 sq m / 1335 sq ft



First Floor



Energy Efficiency Rating		
	Current	Potential
Very energy efficient - lower running costs		
(92 plus) <b>A</b>		
(81-91) <b>B</b>		
(69-80) <b>C</b>		
(55-68) <b>D</b>		
(39-54) <b>E</b>		
(21-38) <b>F</b>		
(1-20) <b>G</b>		
Not energy efficient - higher running costs		
<b>England &amp; Wales</b>	71	81
	EU Directive 2002/91/EC	



Agents Note: Whilst every care has been taken to prepare these particulars, they are for guidance purposes only. All measurements are approximate and are for general guidance purposes only and whilst every care has been taken to ensure their accuracy, they should not be relied upon and potential buyers/tenants are advised to recheck the measurements

Sinclair Hammelton

### OFFICE ADDRESS

1 Chatsworth Parade  
Kent  
BR5 1EF

### OFFICE DETAILS

01689 806 770  
infopw@sinclairhammelton.co.uk