

The logo for Sinclair Hammelton, featuring the word 'Sinclair' in green, a house icon in a green circle, and the word 'Hammelton' in purple.

Sinclair Hammelton



GUIDE PRICE

**£900,000**

**Great Elms Road**

, BR2 9NE



## PROPERTY SUMMARY

\*\*\*GUIDE PRICE £900,000-£950,000\*\*\* A truly stunning four bedroom, two bathroom (one shower room) family home of immense charm and character that has been subject to considerable and comprehensive renovation over recent years. Great Elms Road is one of the most sought after roads and is notably quiet, yet within easy reach of the town centre and Bromley South Station. The tasteful interior comprises an entrance hallway with guest cloakroom, a dual aspect generous reception room with feature fireplace, a large kitchen/diner with quality fitted units and double doors to garden and inner courtyard and utility room with access to a boiler/boot room. To the first floor are four bedrooms with a family bathroom, an additional shower room and a large bright split level landing. Other notable features include solar panels and well stocked and landscaped rear garden. Great Elms Road is well served for schools lying within the catchment of the highly regarded Raglan primary and infant school and Bromley town centre is less than half a mile away with its abundance of notable restaurants and shopping facilities. EPC: C

COUNCIL TAX - E

Construction - Traditional

Mains Services - Gas & Electricity - EON, Sewerage and metered Water supply - Thames Water

Heating System - Gas radiators

4



2



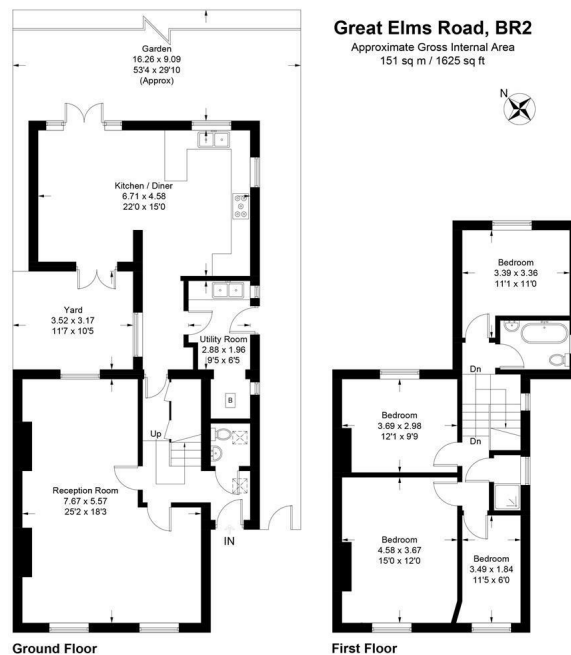
1



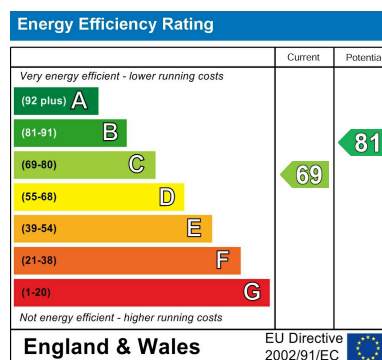
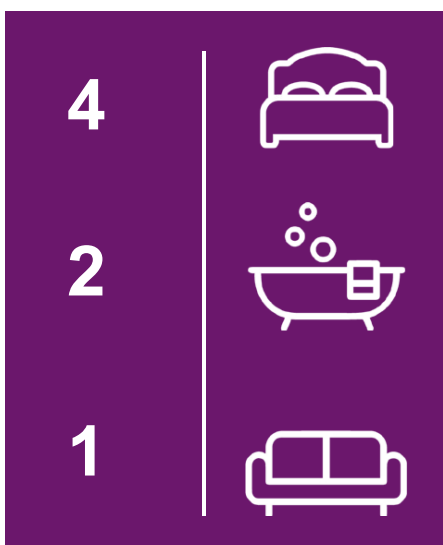








This plan is for layout guidance only. Not drawn to scale unless stated. Windows and door openings are approximate. Whilst every care is taken in the preparation of this plan, please check all dimensions, shapes and compass bearings before making any decisions reliant upon them. Produced by Plimpox on behalf of Sinclair Hammelton (ID002209)



**EPC RATING: C COUNCIL TAX BAND:**

Agents Note: Whilst every care has been taken to prepare these particulars, they are for guidance purposes only. All measurements are approximate and are for general guidance purposes only and whilst every care has been taken to ensure their accuracy, they should not be relied upon and potential buyers/tenants are advised to recheck the measurements

Sinclair Hammelton

**OFFICE ADDRESS**  
23 High Street  
Bromley  
Kent  
BR1 1LG

**OFFICE DETAILS**  
0208 464 5566  
info@sinclairhammelton.co.uk