

The logo features a green circle with a white house icon inside. The text 'Sinclair' is in green and 'Hammelton' is in purple.

Sinclair Hammelton

ASKING PRICE

£650,000

Pembroke Road

Bromley, BR1 2RT

PROPERTY SUMMARY

Sinclair Hammelton are proud to present this beautifully presented four bedroom family home. Conveniently located being in close proximity to both Bickley and St George's primary schools and Bickley Station. Internally, the accommodation comprises: a welcoming entrance hallway, a spacious reception room, a separate dining room and a modern fitted kitchen. On the first floor, there are two double bedrooms, including a master bedroom with a walk-in wardrobe/dressing room, along with a well-appointed family bathroom. The second floor offers two additional bedrooms, perfect for growing families or those in need of extra space for guests or a home office. Externally, the property features a well-maintained southerly-facing rear garden, part paved and part lawned, accessed via the conservatory. EPC: D

4



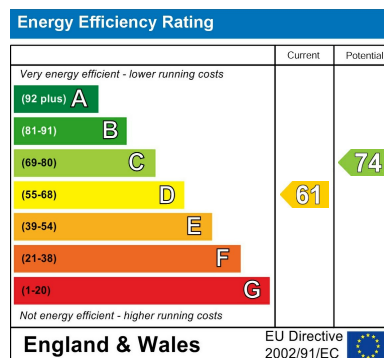
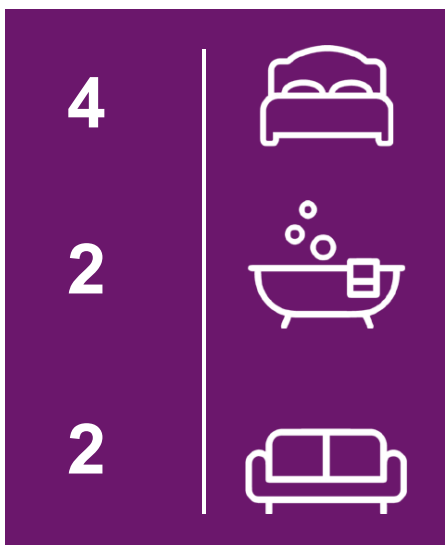
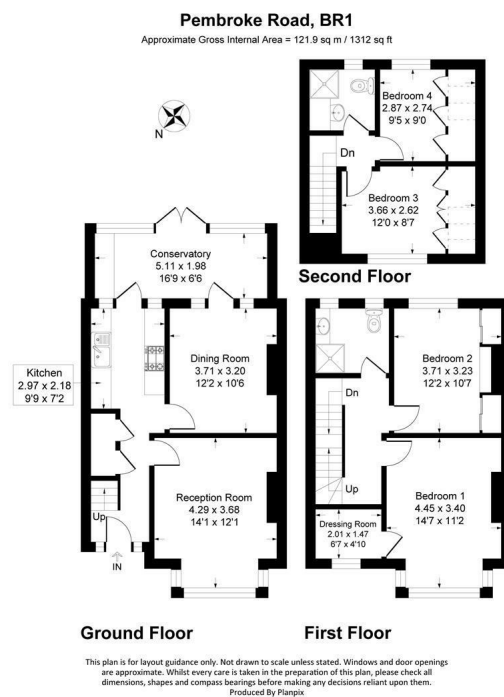
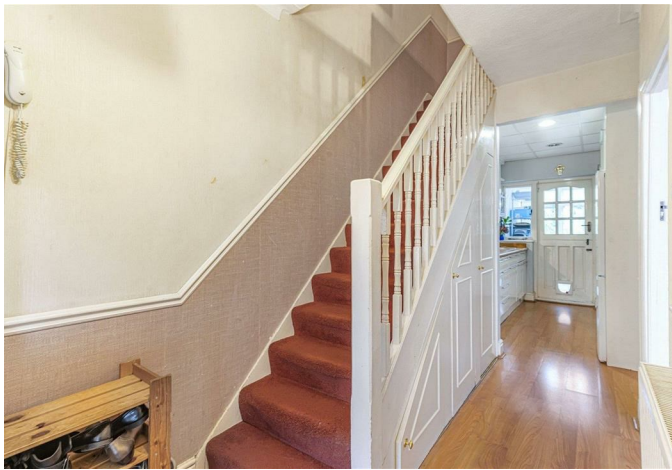
2



2







EPC RATING: D COUNCIL TAX BAND: D

Agents Note: Whilst every care has been taken to prepare these particulars, they are for guidance purposes only. All measurements are approximate and are for general guidance purposes only and whilst every care has been taken to ensure their accuracy, they should not be relied upon and potential buyers/tenants are advised to recheck the measurements

Sinclair Hammelton

OFFICE ADDRESS
23 High Street
Bromley
Kent
BR1 1LG

OFFICE DETAILS
0208 464 5566
info@sinclairhammelton.co.uk