

OFFERS OVER

**£215,000**

**Belcroft Close**

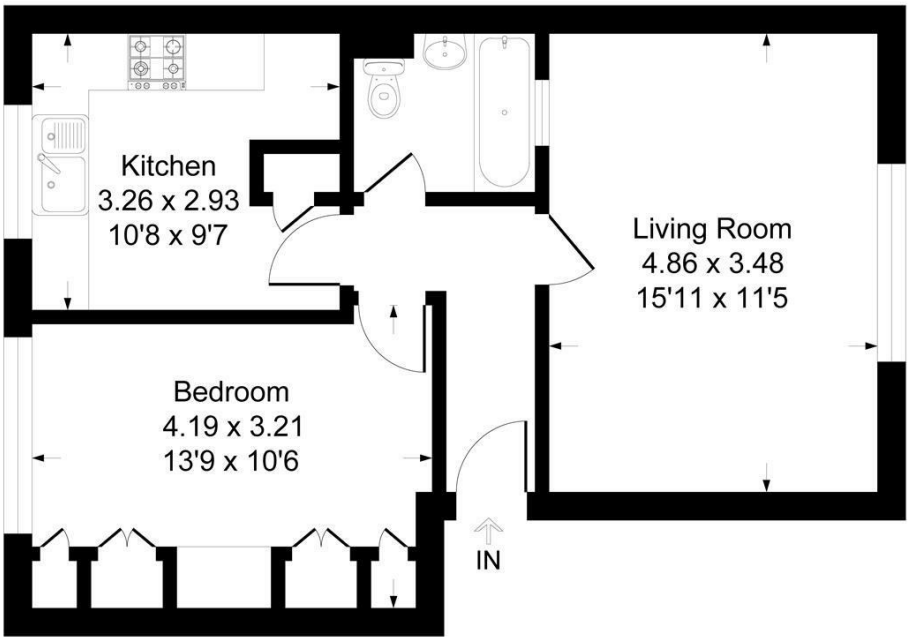
Bromley, BR1 3TL



EPC RATING: C COUNCIL TAX BAND: B

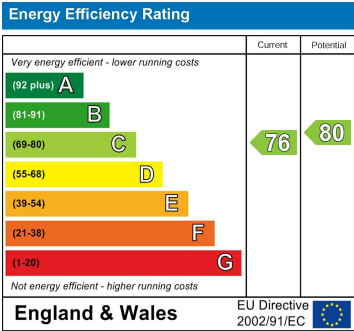
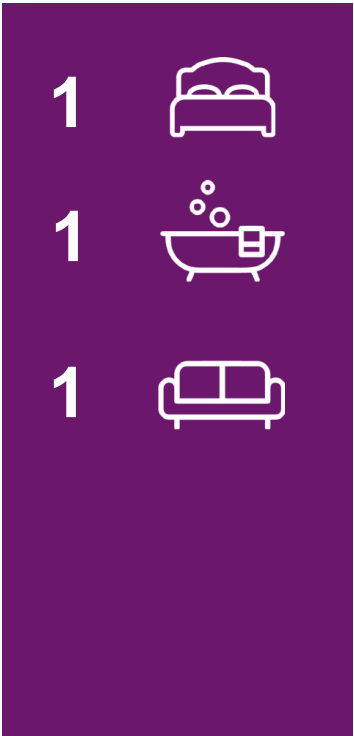
**Belcroft Close, BR1**

Approximate Gross Internal Area 48.5 sq m / 523 sq ft



**Second Floor**

This plan is for layout guidance only. Not drawn to scale unless stated. Windows and door openings are approximate. Whilst every care is taken in the preparation of this plan, please check all dimensions, shapes and compass bearings before making any decisions reliant upon them.  
Produced By Planpix



Agents Note: Whilst every care has been taken to prepare these particulars, they are for guidance purposes only. All measurements are approximate and are for general guidance purposes only and whilst every care has been taken to ensure their accuracy, they should not be relied upon and potential buyers/tenants are advised to recheck the measurements



**OFFICE ADDRESS**  
23 High Street  
Bromley  
Kent  
BR1 1LG

**OFFICE DETAILS**  
0208 464 5566  
info@sinclairhammelton.co.uk