



**King George Vi Drive  
Hove, BN3 6XF**

**FERMERS**





3  
2  
2


TENURE  
Freehold

EPC RATING  
D

COUNCIL TAX BAND  
E




Energy Efficiency Rating

	Current	Potential
Very energy efficient - lower running costs		
(92 plus) A		
(81-91) B		
(69-80) C		79
(55-68) D	67	
(39-54) E		
(21-38) F		
(1-20) G		
Not energy efficient - higher running costs		

England & Wales

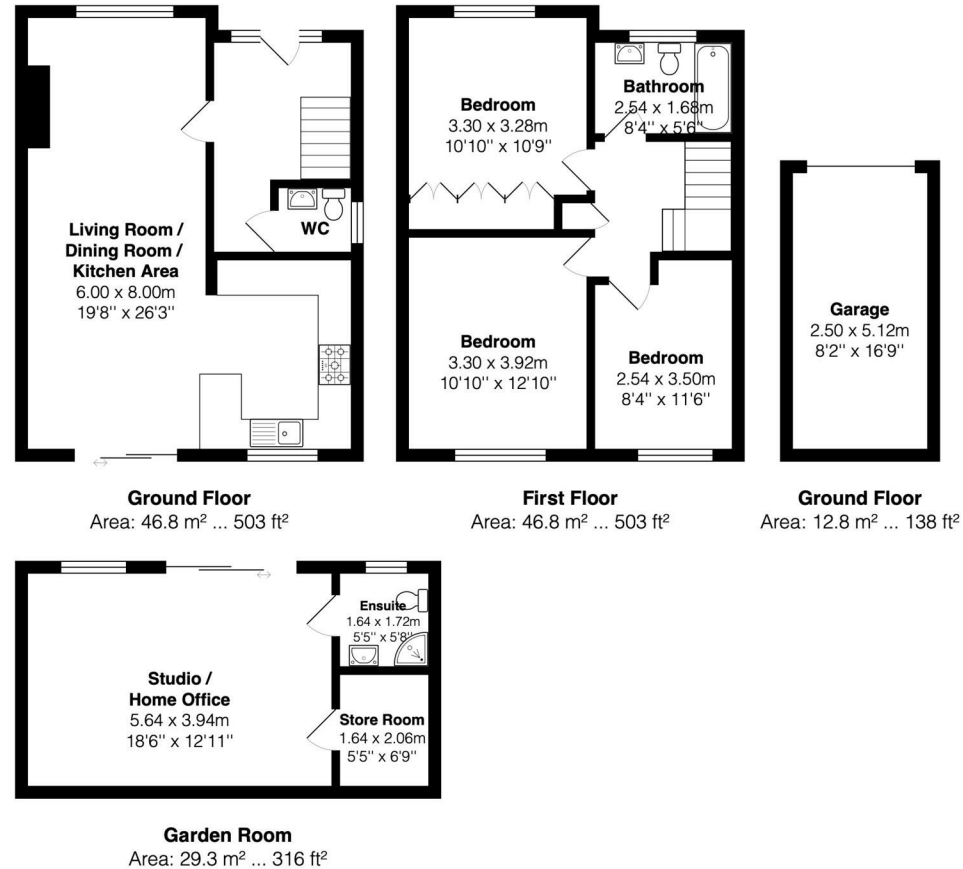
EU Directive  
2002/91/EC







# King George Vi Drive



Total Area: 135.6 m<sup>2</sup> ... 1460 ft<sup>2</sup>

All measurements are approximate and for display purposes only

# FERMERS

## OFFICE ADDRESS

67 Queen Victoria Avenue  
Hove  
East Sussex  
BN3 6XA

## OFFICE DETAILS

01273 541 177  
sales@fermers.co.uk  
www.Fermers.co.uk

Agents Note: Whilst every care has been taken to prepare these particulars, they are for guidance purposes only. All measurements are approximate and are for general guidance purposes only and whilst every care has been taken to ensure their accuracy, they should not be relied upon and potential buyers/tenants are advised to recheck the measurements