

A single-story brick house with a grey tiled roof and a prominent chimney on the left. The front features a white double garage door and a large window with a diamond-patterned leaded glass design, flanked by white shutters. A small plaque above the window reads "WOODLAND AVE". The house is surrounded by a low brick wall and a paved driveway. A bare tree stands in the foreground on the right, and a white car is partially visible behind it. The sky is blue with light clouds.

FERMERS

GUIDE PRICE

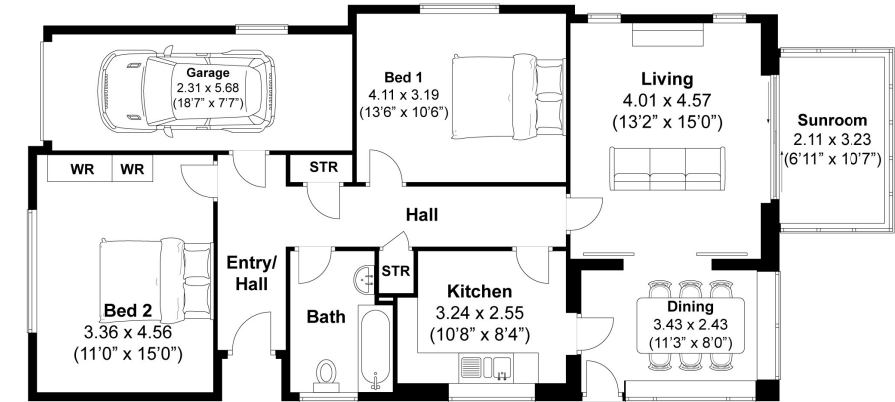
£500,000

Woodland Avenue

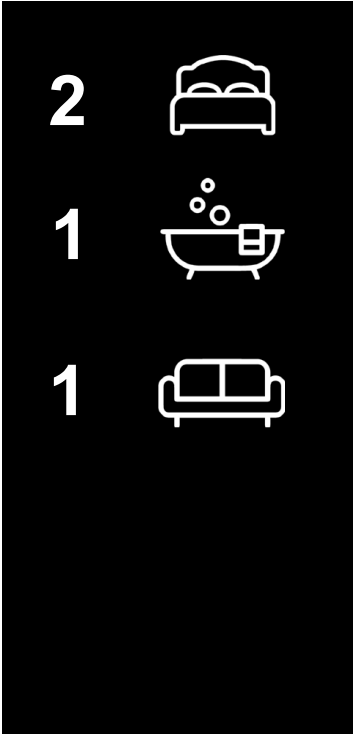
Hove, BN3 6BN

EPC RATING: COUNCIL TAX BAND: E

Woodland Avenue, Hove
Approximately 99.8 sqm (1074 sqft)



Disclaimer:
The measurements are approximate and are for illustration purposes only.
The dimensions are measured internally and in metres and feet. We do not take any responsibility for errors and/or omissions.
If you require further verification please discuss with the buyer/owner of the property.



Energy Efficiency Rating		
	Current	Potential
Very energy efficient - lower running costs		
(92 plus) A		
(81-91) B		
(69-80) C		
(55-68) D		
(39-54) E		
(21-38) F		
(1-20) G		
Not energy efficient - higher running costs		
England & Wales	EU Directive 2002/91/EC	



Agents Note: Whilst every care has been taken to prepare these particulars, they are for guidance purposes only. All measurements are approximate and are for general guidance purposes only and whilst every care has been taken to ensure their accuracy, they should not be relied upon and potential buyers/tenants are advised to recheck the measurements

FERMERS

OFFICE ADDRESS
67 Queen Victoria Avenue
Hove
East Sussex
BN3 6XA

OFFICE DETAILS
01273 541 177
sales@fermers.co.uk
www.Fermers.co.uk