



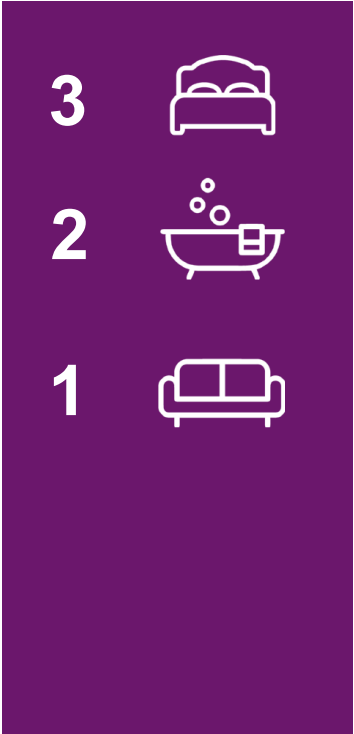
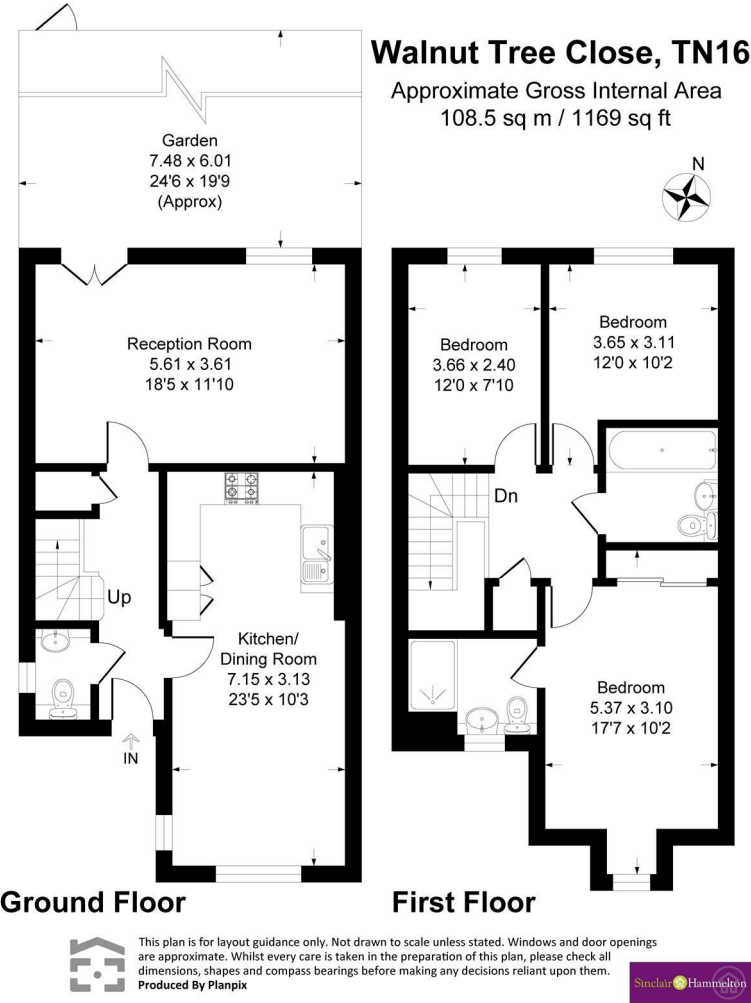
OFFERS IN EXCESS OF

£700,000

Walnut Tree Close

Westerham, TN16 1EW

EPC RATING: C COUNCIL TAX BAND: E



| Energy Efficiency Rating | | |
|---|-------------------------|-----------|
| | Current | Potential |
| Very energy efficient - lower running costs | | |
| (92 plus) A | | |
| (81-91) B | | |
| (69-80) C | 78 | 82 |
| (55-68) D | | |
| (39-54) E | | |
| (21-38) F | | |
| (1-20) G | | |
| Not energy efficient - higher running costs | | |
| England & Wales | EU Directive 2002/91/EC | |



Agents Note: Whilst every care has been taken to prepare these particulars, they are for guidance purposes only. All measurements are approximate and are for general guidance purposes only and whilst every care has been taken to ensure their accuracy, they should not be relied upon and potential buyers/tenants are advised to recheck the measurements

Sinclair Hammelton

OFFICE ADDRESS
1&2 The Grange
Westerham
Kent
TN16 7AH

OFFICE DETAILS
01959 587 460
infowh@sinclairhammelton