

Cadenza*legacy*

PENHA LONGA, ALCABIDECHÉ

Solara Villa

CadenzaLux

P: +351 939 587 891

E: mg@cadenzalux.com



TABLE OF CONTENTS

| | |
|--------------------------------------|----|
| <u>THE PROPERTY</u> | 3 |
| <u>SPECIFICATIONS & FEATURES</u> | 6 |
| <u>GROUND FLOOR</u> | 8 |
| <u>FIRST FLOOR</u> | 10 |
| <u>OUTDOOR SPACE</u> | 12 |
| <u>ADDITIONAL FEATURES</u> | 13 |
| <u>FLOOR PLANS</u> | 14 |
| <u>LIFESTYLE & LOCATION</u> | 16 |
| <u>CONTACT US</u> | 17 |



SOLARA VILLA

THE PROPERTY

A distinguished five-bedroom residence within the exclusive gated estate of Penha Longa, where modern sophistication meets architectural grace.



SOLARA VILLA

THE PROPERTY

Framed by manicured landscapes and enhanced with 24/7 security, this independent villa offers an atmosphere of privacy, serenity, and effortless refinement. While the exterior reflects the traditional elegance of Penha Longa's resort villas, the interior has been fully refurbished to modern specifications, elevating comfort and luxury to a level that makes the property entirely unique within the estate.



SOLARA VILLA

THE PROPERTY

The villa's centrepiece is its striking staircase, meticulously redesigned and extended through to the slanted rooftop, transforming it into an architectural statement and drawing natural light deep into the home. This detail underscores the careful balance between architectural heritage and contemporary design that defines the property.

SOLARA VILLA

Specifications & Features

Sale: € 2 200 000

Total Built Area: 262 m2

Plot Area: 815 m2

Bedrooms: 5

Bathrooms: 3

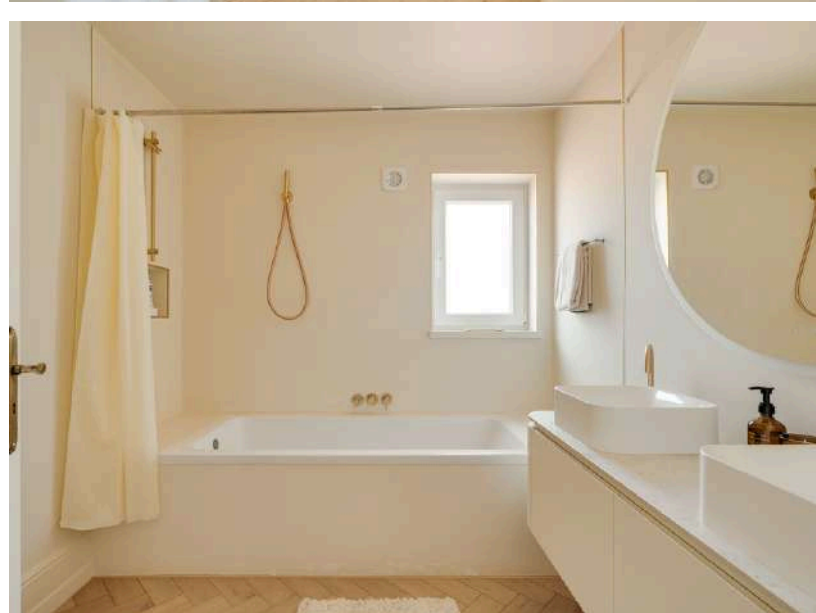
Floors: 3

Energy Efficiency Rating: C





CL



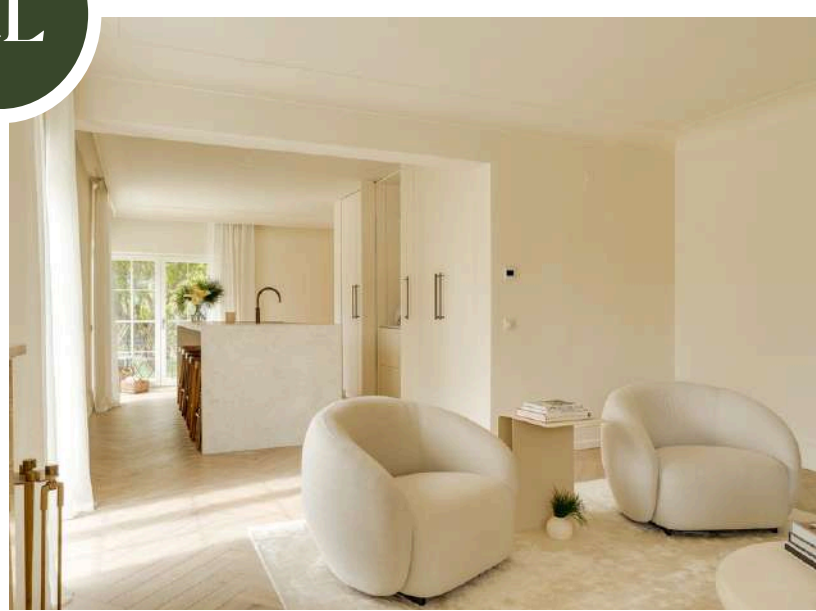
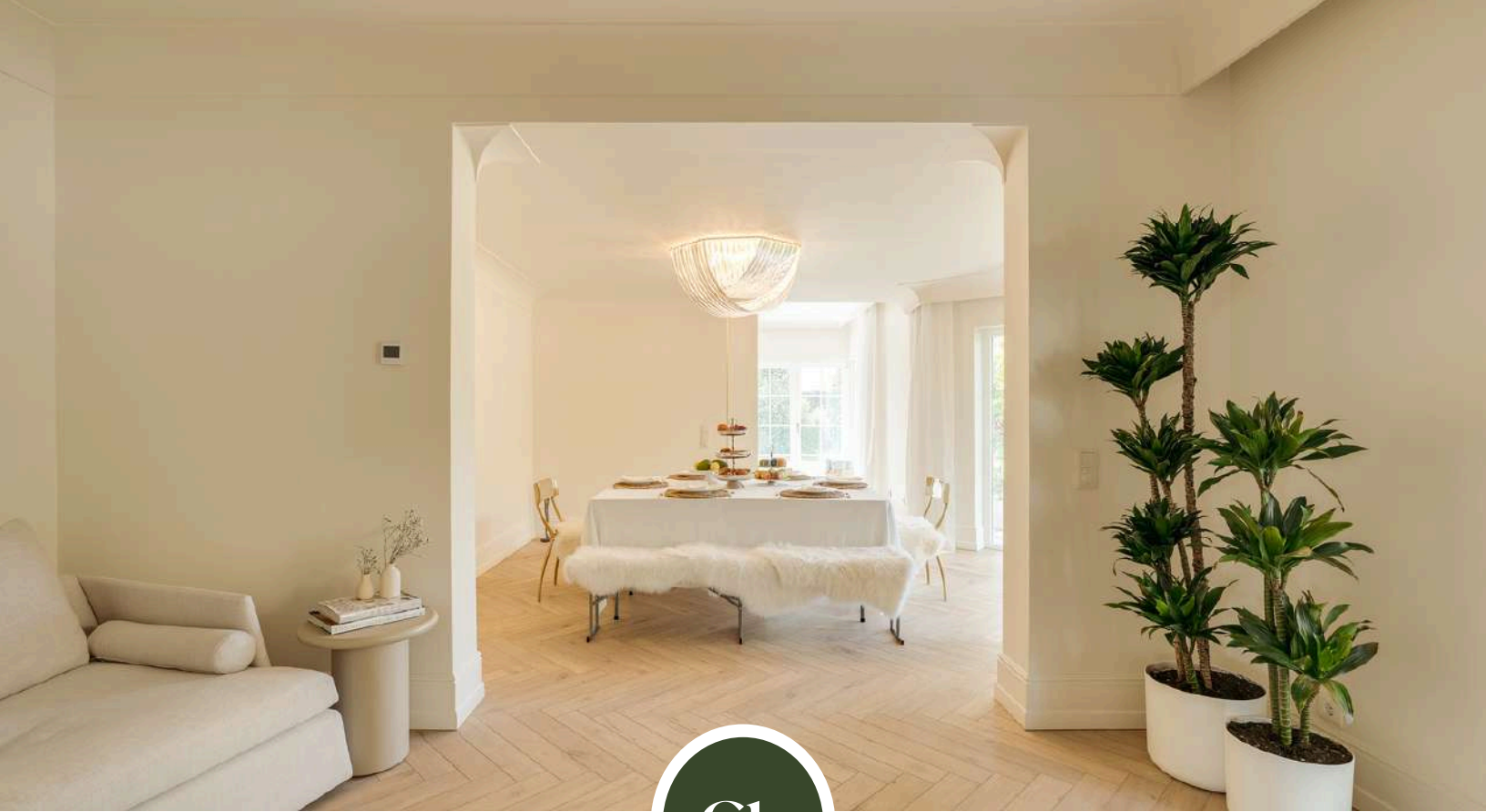
SOLARA VILLA

Ground Floor

The ground floor opens with an inviting entrance hall leading to expansive living and dining areas, complemented by a sleek modern kitchen equipped with a double fridge, Miele appliances, and a Quooker tap.

A pantry, secondary living area, office, and separate laundry ensure functionality, while every room enjoys direct access to the garden and saltwater pool. A private bedroom and full bathroom complete the right wing of this level, ideal for guests.





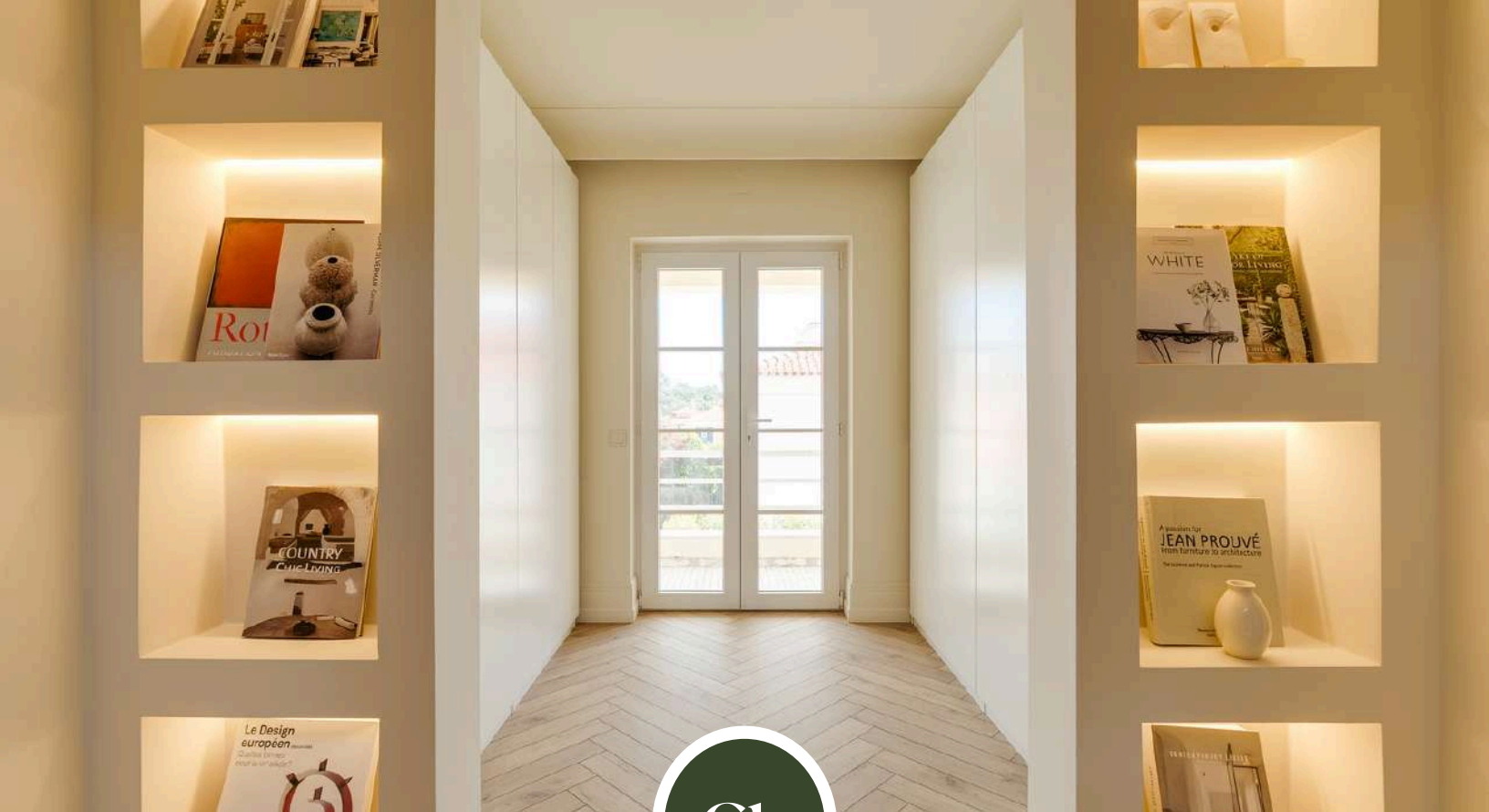
SOLARA VILLA

First Floor

On the first floor, the master suite takes pride of place with a walk-in closet, accompanied by three additional bedrooms and bathrooms, creating a harmonious family layout.

Above, a converted mezzanine serves as a versatile open space, equally suited to a lounge, reading corner, playroom, or TV room.







Outdoor Space

Outdoors, a private garden frames the saltwater pool, offering the perfect backdrop for leisure and entertaining.

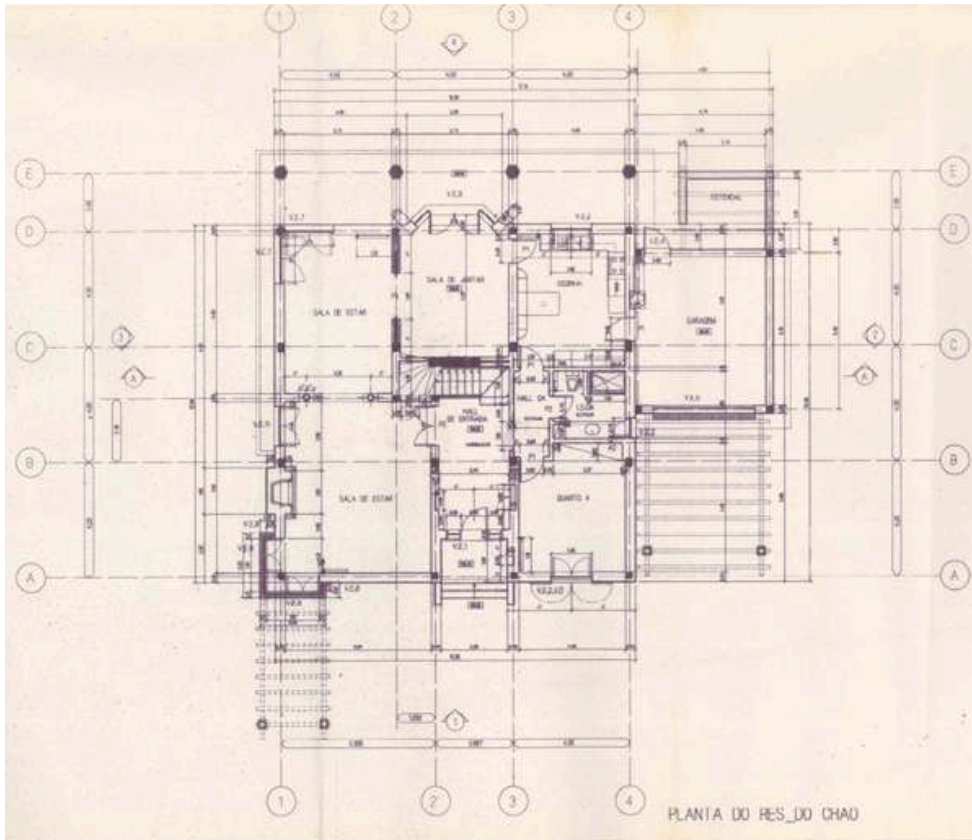
SOLARA VILLA



Additional Features

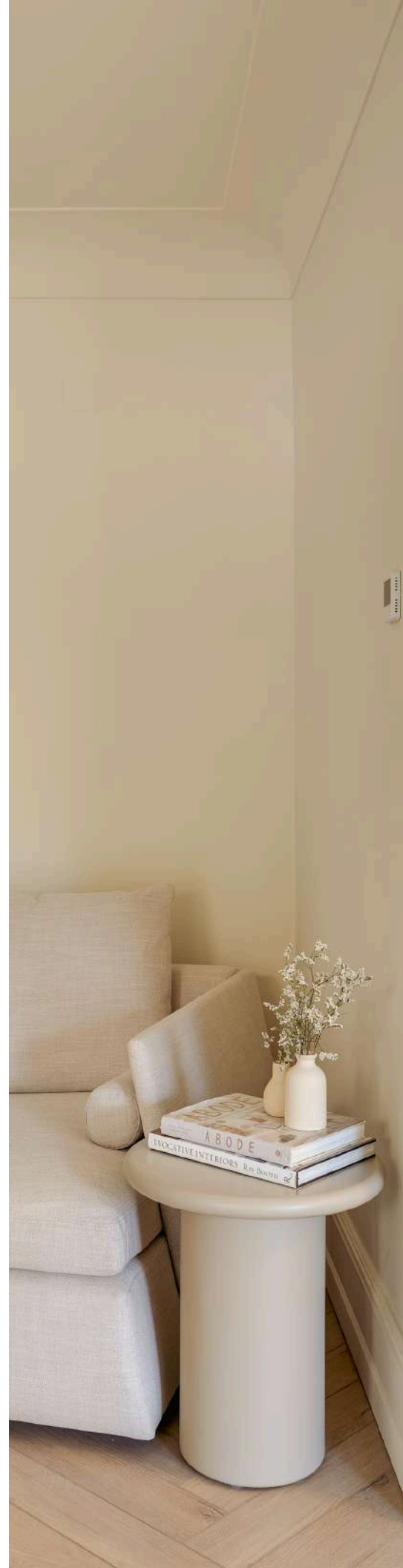
- Meticulous Design
- Light-filled open-plan spaces
- Custom-designed bathrooms with W7 finishes
- Private Quarters and Versatile Spaces
- Freshly repainted outside
- Thoroughly renovated
- Floor heating throughout the house
- Nestled within an exclusive gated community





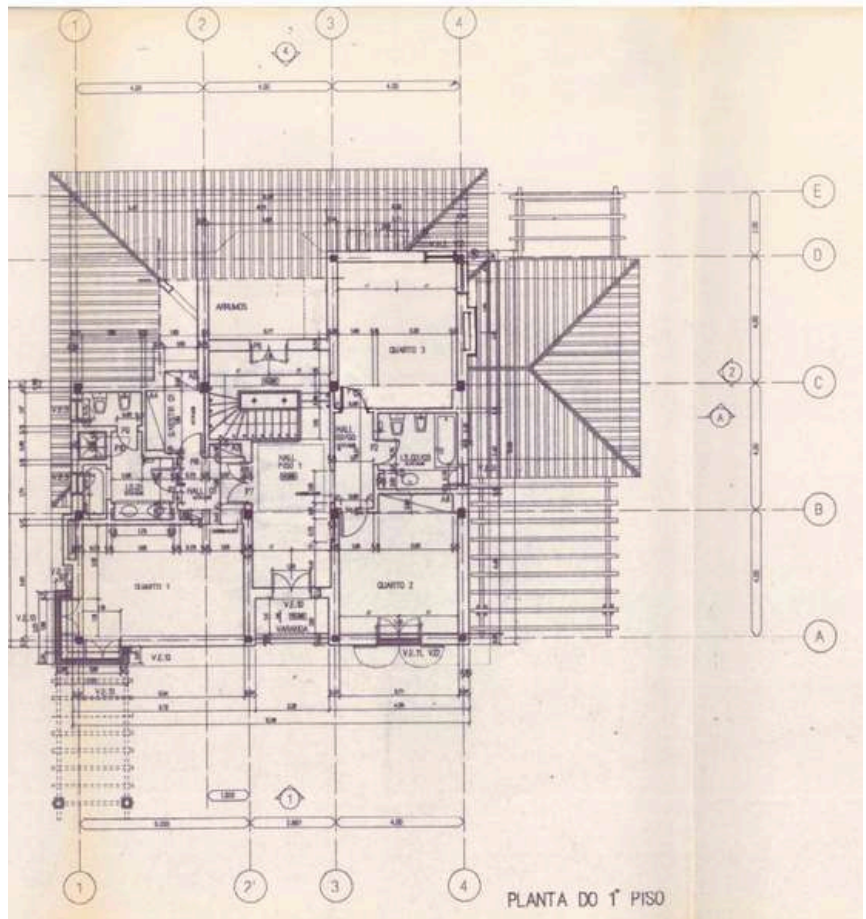
GROUND FLOOR PLAN

SOLARA VILLA





FIRST FLOOR PLAN





CL

LIFESTYLE & LOCATION

Life at Penha Longa extends far beyond the villa itself. Residents enjoy privileged benefits at the Ritz-Carlton Penha Longa resort, with its five-star spa, health club, and acclaimed dining.

Championship golf courses, a racket club, and wellness facilities sit on the doorstep, while Guincho Beach lies only ten minutes away. International schools are within a 10–20 minute drive, and the cultural treasures of Sintra, a UNESCO World Heritage site, are just fifteen minutes away. Perfectly positioned between Cascais and Lisbon, the estate combines natural beauty with cosmopolitan convenience.

This villa is not only rare but singular: a home that pairs the heritage of Penha Longa with a complete modern refurbishment, delivering elegance, privacy, and distinction in every detail.



CL

CadenzaLux

Wanda von Breisky Unipessoal Limitada
Rua Braamcamp 6, 1 Esq., 1250-050 Lisbon
General Information: +351 214 029 418
Email: realestate@cadenzalux.com
www.cadenzalux.com
AMI 18337

