



APARTMENT 20 MASTER WILLIAMS PLACE

FOLKESTONE, CT20 1FF

£950 PER MONTH

Welcome to this charming new build apartment located on Guildhall Street in the vibrant town of Folkestone. This modern property, completed in 2025, offers a perfect blend of contemporary living and convenience. Spanning an impressive 540 square feet, the apartment features a well-designed layout that maximises space and light.

Upon entering, you will find a welcoming reception room that serves as an ideal space for relaxation or entertaining guests. The apartment boasts one comfortable bedroom, providing a peaceful retreat at the end of the day. The bathroom is stylishly appointed, ensuring both functionality and comfort.

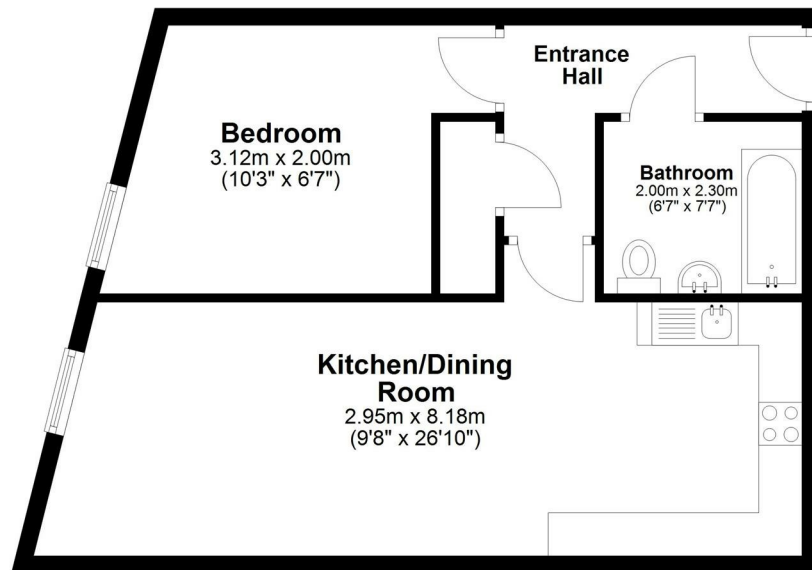
Situated in a desirable area, this apartment is close to local amenities, shops, and transport links, making it an excellent choice for those seeking a vibrant lifestyle.

Do not miss the chance to make this delightful apartment your own. With its contemporary design and prime location, it is sure to appeal to a wide audience.

**WEST END
ESTATES**
LETTINGS AND PROPERTY MANAGEMENT

Ground Floor

Approx. 50.2 sq. metres (540.5 sq. feet)



Total area: approx. 50.2 sq. metres (540.5 sq. feet)

Whilst every attempt has been made to ensure the accuracy of the floorplan contained here, measurements of doors, windows, rooms and any other items are approximate and no responsibility is taken for any error, omission or mis-statement. This plan is for lustrative purposes only and should be used as such by any prospective purchaser. The services, systems and appliances shown have not been tested and no guarantee as to their operability or efficiency can be given.
Plan produced using PlanUp.



Energy Efficiency Rating		
	Current	Potential
Very energy efficient - lower running costs		
(92 plus) A		
(81-91) B		
(69-80) C		
(55-68) D		
(39-54) E		
(21-38) F		
(1-20) G		
Not energy efficient - higher running costs		
England & Wales	EU Directive 2002/91/EC	

EPC Rating: B **Council Tax Band: A**

Agents Note: Whilst every care has been taken to prepare these particulars, they are for guidance purposes only. All measurements are approximate and are for general guidance purposes only and whilst every care has been taken to ensure their accuracy, they should not be relied upon and potential buyers/tenants are advised to recheck the measurements

West End Estates Folkestone
7 Sapper Row
Folkestone
Kent
CT20 3WT

01303 478777
office@westend-estates.co.uk

**WEST END
ESTATES**
LETTINGS AND PROPERTY MANAGEMENT