



23 GRIMSTON GARDENS FOLKESTONE, CT20 2PU

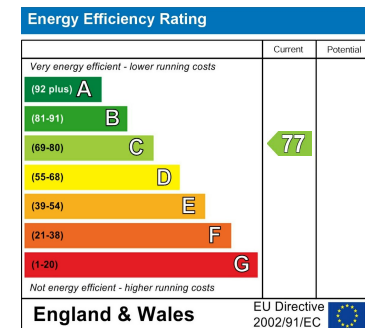
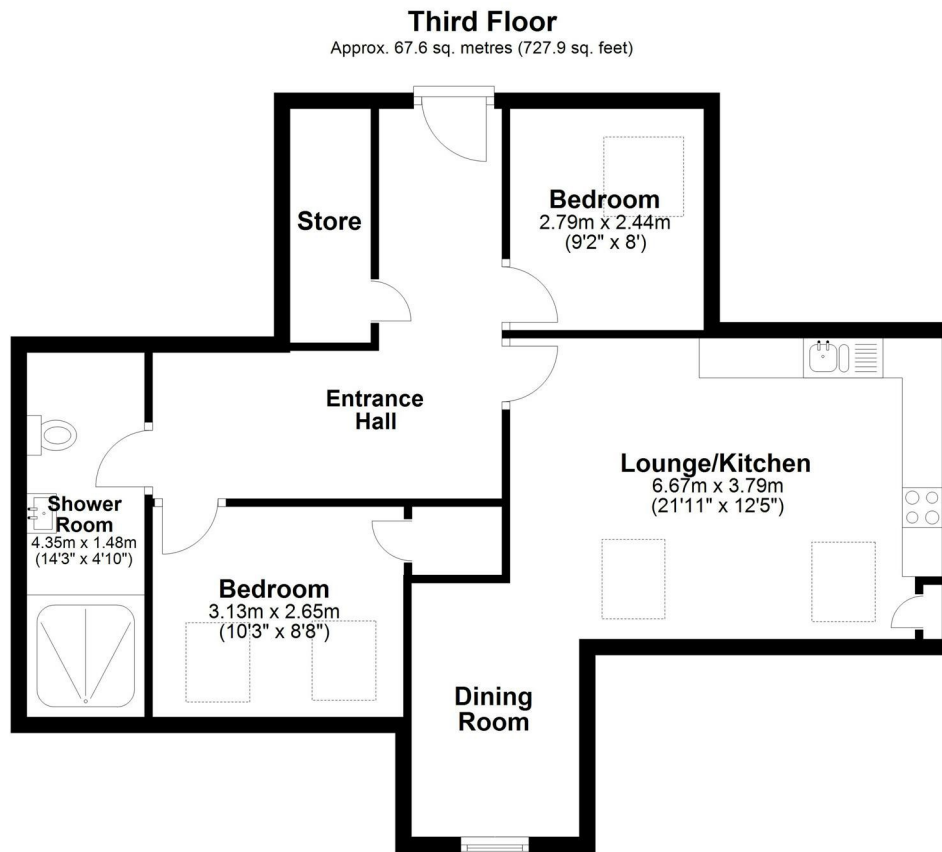
£1,095 PER MONTH

Nestled in the charming area of Grimston Gardens, Folkestone, this delightful flat offers a perfect blend of comfort and convenience. With two cosy bedrooms, this property is ideal for couples, or individuals seeking a peaceful retreat. The inviting reception room serves as a welcoming space for relaxation and entertaining guests, providing a warm atmosphere to unwind after a long day.

The flat features a modern bathroom, designed with both style and functionality in mind, ensuring a pleasant experience for daily routines. The property is situated in a desirable location, close to local amenities, parks, and transport links, making it easy to explore the vibrant surroundings of Folkestone.

This flat presents an excellent opportunity for those looking to rent a home that combines practicality with a touch of elegance. Don't miss the chance to make this charming flat your home in the heart of Folkestone.

**WEST END
ESTATES**
LETTINGS AND PROPERTY MANAGEMENT



EPC Rating: C Council Tax Band: B

Agents Note: Whilst every care has been taken to prepare these particulars, they are for guidance purposes only. All measurements are approximate and are for general guidance purposes only and whilst every care has been taken to ensure their accuracy, they should not be relied upon and potential buyers/tenants are advised to recheck the measurements

West End Estates Folkestone
7 Sapper Row
Folkestone
Kent
CT20 3WT

01303 478777
office@westend-estates.co.uk

**WEST END
ESTATES**
LETTINGS AND PROPERTY MANAGEMENT