


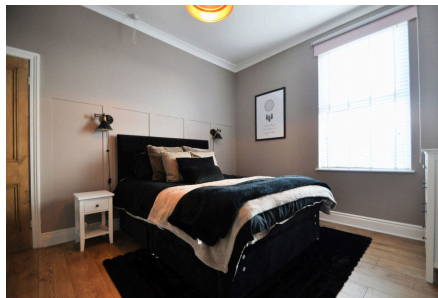


Hastings Road, Brighton-le-Sands

£269,995 | Council Tax Band B | EPC Rating D

 3  1  2



Beautifully upgraded and cared for, this stunning three-bedroom semi-detached home has tasteful décor throughout, boasting a stylish breakfast kitchen, striking bathroom, as well as some wonderful features including vaulted ceilings and original cast-iron fireplaces. Sitting proud in a superb location, near to a great range of local shops, transport links and only a 5-minute stroll down to Crosby Beach. Interior: vestibule, inviting hallway, living room, sitting room, kitchen and breakfast area on the ground floor. Off the first-floor split level landing there is the striking family bathroom, three bedrooms and access to a large loft space. Complete with uPVC double glazing and central heating. Exterior: low maintenance rear garden enjoying the afternoon and evening sunshine. Contact our team to book your viewing of this delightful home today.

Key Features

- Semi Detached Home
- Stylish Breakfast Kitchen
- Sunny Rear Garden
- Double Glazing
- Council Tax Band B
- Three Bedrooms
- Beautifully Upgraded
- Great Location
- Central Heating
- EPC Rating D



Copyright V360 Ltd 2025 | www.houseviz.com