

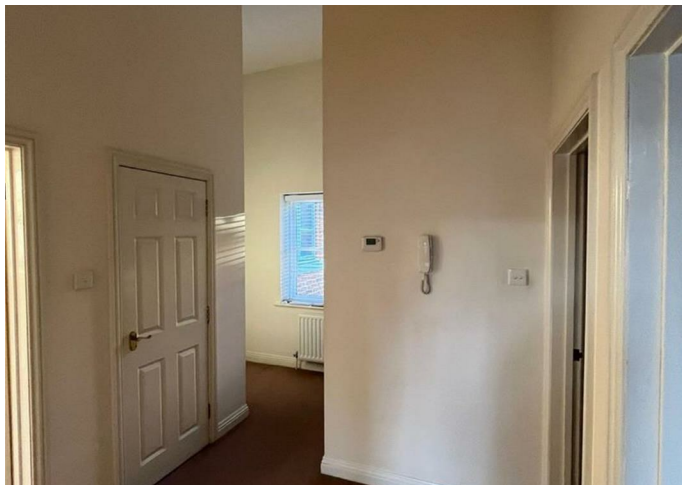


Apartment

# 8 CARDINAL MEWS, VESTRY CLOSE, ANDOVER, SP10 3FY

## £1,150

FEATURES



# 2 Bedroom Apartment located in Andover

Welcome to this bright and spacious 2-bedroom apartment located in the charming and well-maintained Cardinal Mews development. Blending modern comfort with timeless character, this delightful home features high ceilings, large arched windows, and a calm, neutral décor throughout — perfect for professionals, small families, or couples seeking a peaceful yet well-connected place to live.

Two generously sized bedrooms, including a master with en-suite shower room.

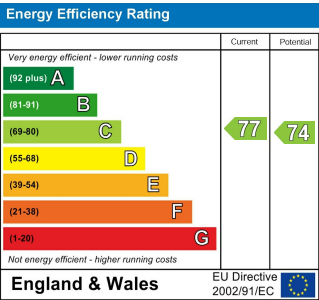
Bright living room with large windows allowing plenty of natural light.

Modern fitted kitchen with integrated oven, gas hob, and ample worktop and storage space.

Family bathroom fitted with a pedestal sink, WC, and tiled walls.

Call us on  
**02045 427465**  
[info@rjgallagherlettings.com](mailto:info@rjgallagherlettings.com)

**Council Tax Band**  
**C**



Agents Note: Whilst every care has been taken to prepare these particulars, they are for guidance purposes only. All measurements are approximate and are for general guidance purposes only and whilst every care has been taken to ensure their accuracy, they should not be relied upon and potential buyers are advised to recheck the measurements.

