

Ranelagh  
MEWS



RANELAGH ROAD



## RANELAGH MEWS

Ranelagh Mews, Shrewsbury Road, Redhill, RH1 6BH

LAND & NEW HOMES  
**Robert  
Leech.**



# Ranelagh MEWS



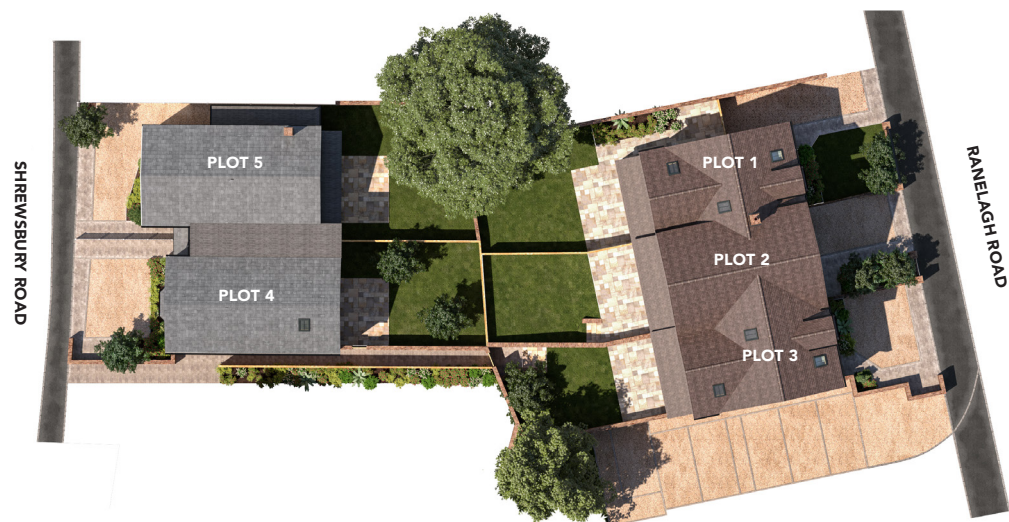
With frontages onto both Ranelagh Road and Shrewsbury Road, this exciting NEW DEVELOPMENT by CLOVERLEAF DEVELOPMENTS\* of just 5 beautifully appointed homes will be ready to move into this summer.

Four of the houses are brand new and the fifth is a superbly restored period house. Ranelagh Mews sits perfectly in these popular roads and blends beautifully with the surrounding period properties. The spacious and bright 3 - 4 bedroom accommodation is arranged over 2 or 3 floors. Each house has a private garden as well as the benefit of off road parking or garage.

The location of Ranelagh Mews is a particular feature of the development and is set in pleasant residential surroundings within easy reach of both Reigate and Redhill town centres, and within walking distance of Redhill train station. Together they provide an outstanding range of amenities including mainline railway stations, excellent schools, extensive choice of shops, restaurants and cafes - Reigate is particularly popular and reflects the affluence of this delightful Surrey town which is surrounded by beautiful Greenbelt countryside.

Other local amenities include Redhill mainline railway station which is less than a mile from Ranelagh Mews, nearby woodland walks, local golf courses and sports facilities, a choice of private and state schools, convenient access to M23 and M25 motorways. Gatwick Airport is only approximately 15 minutes by car.

\*Cloverleaf Developments is the trading name of Hoama (Redhill) Ltd.



# FEATURES

- High Specification New and Renovated Homes on Ranelagh and Shrewsbury Road
- Prime Residential Location between Reigate & Redhill
- Primary Bedrooms with En-suite
- Landscaped Rear Gardens
- Off Street Parking
- Double Glazed Tilt & Turn Sash Windows
- Air Conditioning (Plots 1,2 & 3)
- Air Source Heat Pumps

## PLOT 1 - 3 RANELAGH ROAD

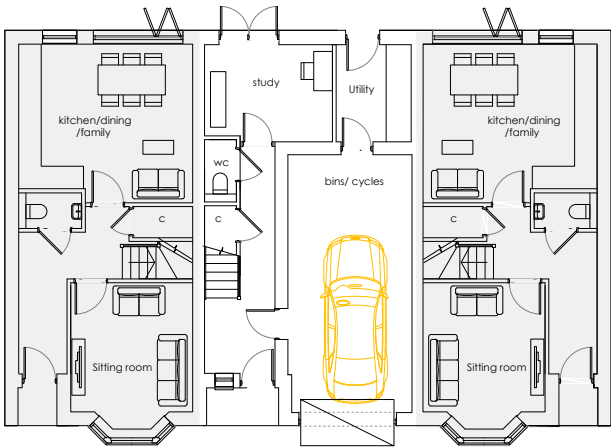
PLOT 1 TOTAL  
117.11SQM 1260 SQ FT

PLOT 2 TOTAL (EXCL GARAGE)  
120.11 SQM 1293 SQ FT

PLOT 3 TOTAL  
117.11SQM 1260 SQ FT

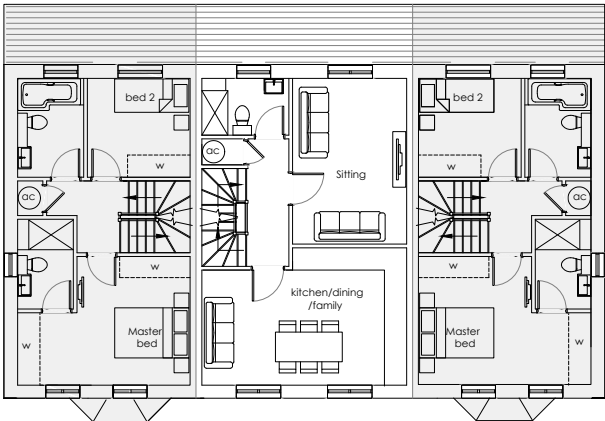


GROUND FLOOR



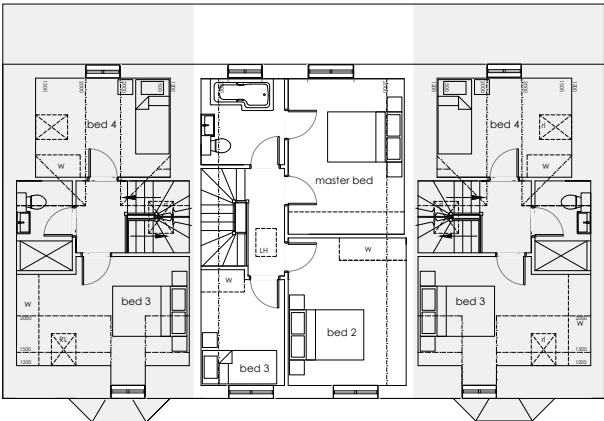
PLOT 3                      PLOT 2                      PLOT 1

FIRST FLOOR



PLOT 3                      PLOT 2                      PLOT 1

SECOND FLOOR



PLOT 3                      PLOT 2                      PLOT 1



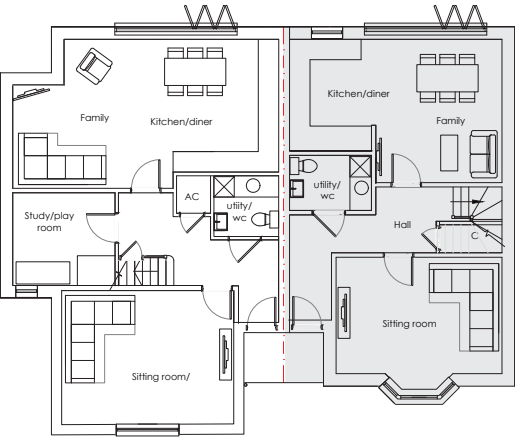
# PLOT 4 & 5 SHREWSBURY ROAD

PLOT 4 TOTAL  
141.53 SQM 1523 SQ FT

PLOT 5  
135.80 SQM 1462 SQ FT

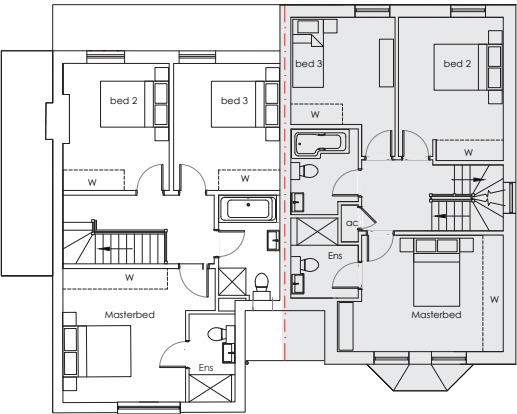


GROUND FLOOR



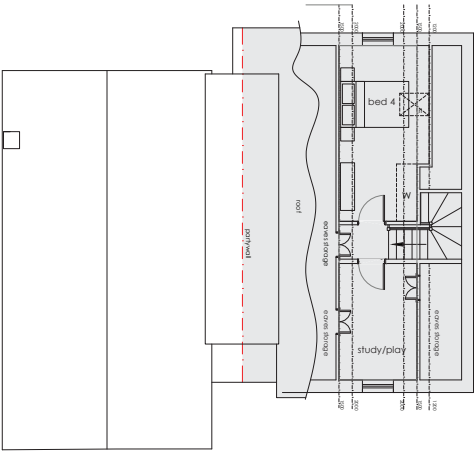
PLOT 5                      PLOT 4

FIRST FLOOR



PLOT 5                      PLOT 4

SECOND FLOOR



PLOT 5                      PLOT 4

Disclaimer: Certain details may have changed since printing. We would like to point out that the computer generated images, floor plans, layout, pictures and photographs are for guidance/illustrative purposes only. This specification does not constitute a part of any contract. Robert Leech Estate Agents reserve the right to make alterations to the specification of the property at any time during the course of construction, without prior notice.

**Robert Leech Estate Agents**  
**1-3 High Street Reigate RH2 9AA**  
**reigate@robertleech.com**  
**01737 246246**  
**robertleech.com**

