



Ash Close, Lingfield, RH7 6HQ

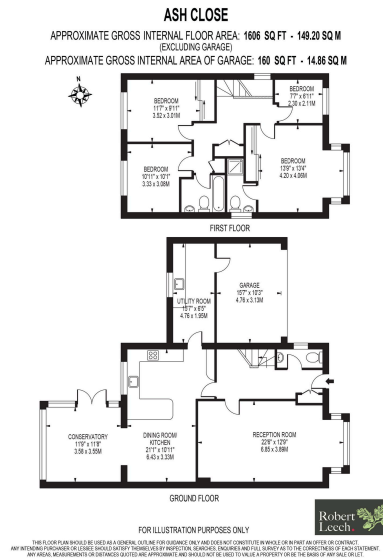
Guide Price £675,000

🛏 4 🍽 2 🛋 2

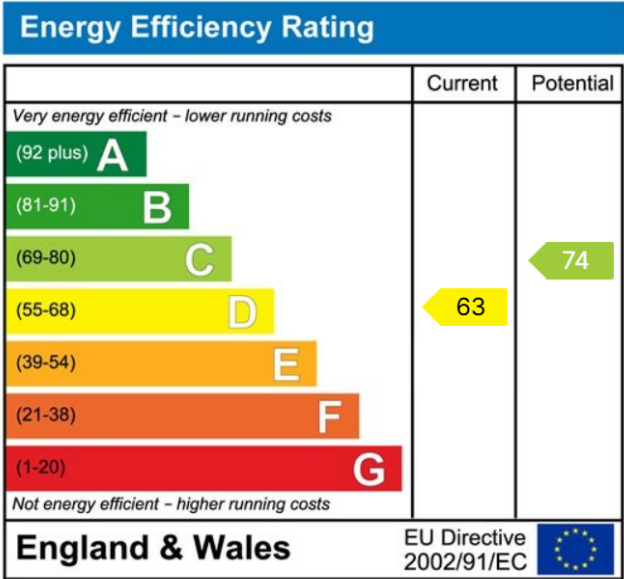


- No Onward Chain
- Detached Family Home
- 4 Bedrooms, 2 Baths
- Cul-De-Sac Location
- Walking Distance to Mainline Station
- Village Centre Nearby
- Driveway Parking
- Private Rear Garden





A spacious detached family home tucked away in a quiet Lingfield cul-de-sac, offered to the market with no onward chain. Featuring bright and versatile living space, four bedrooms, driveway parking, a garage, and a private garden, it is ideally located close to excellent schools, transport links and village amenities.



**DISCLAIMER. PROPERTY MISDESCRIPTIONS.** Whilst every attempt has been made to ensure accuracy of the property details, no responsibility is taken for error, omission or mis-statement. The Agent has not yet tested any apparatus, equipment, fixtures and fittings or services and so cannot verify that they are in working order or fit for the purpose. A buyer is advised to obtain verification from their Solicitor or Surveyor. References to the Tenure of a property are based on information supplied by the Seller. The agent has not had sight of the title documents.