

01202 683444

Orchard Plaza, 41 High Street

Poole, Dorset, BH15 1EG

www.quayliving.co.uk



The Quay, Poole

Poole, BH15 1HH

£1,400 PCM

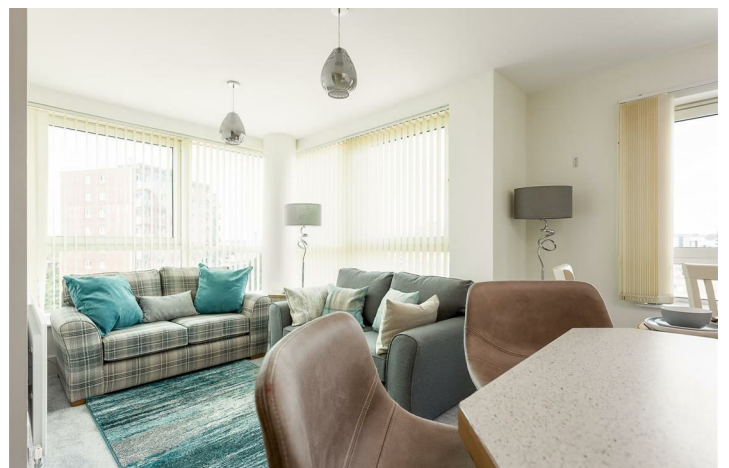


****3-5 MONTH LET ONLY****

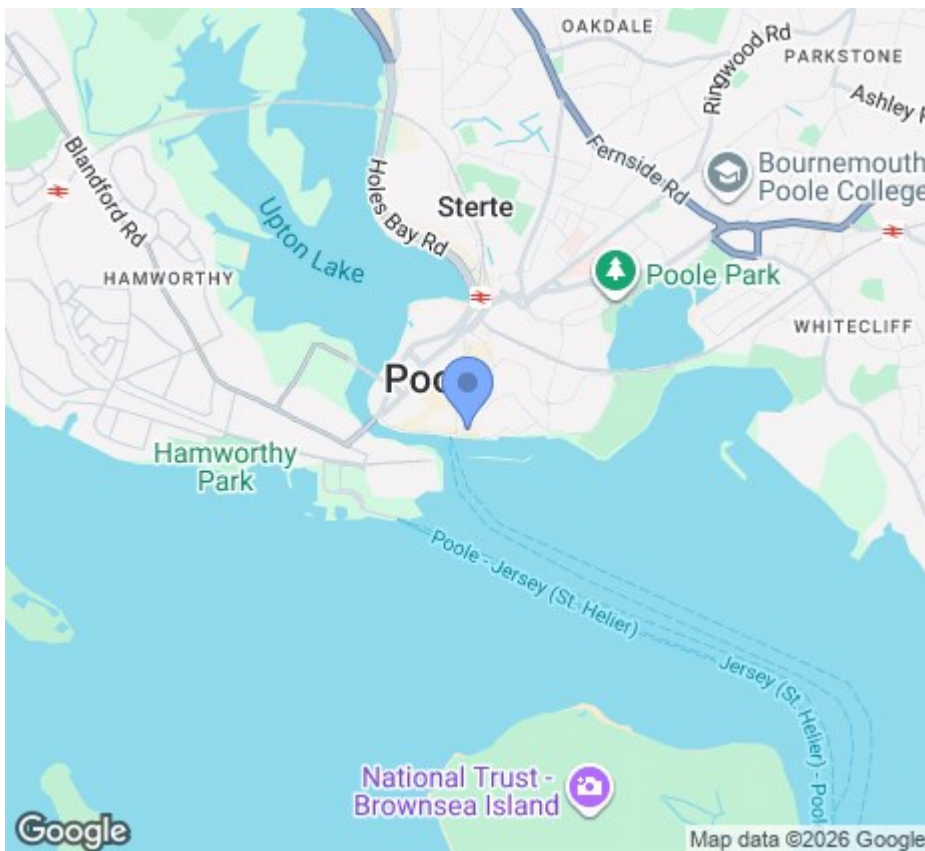
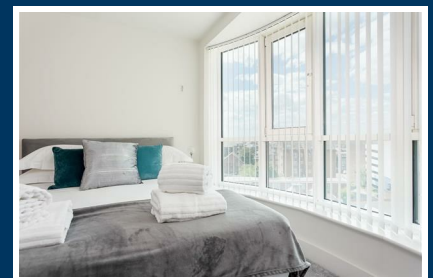
Located in the prestigious Dolphin Quays development on Poole Quay, a 2 bedroom, 2 bathroom apartment located on the 5th floor. Fabulous central location for exploring Poole Harbour, the Jurassic coast, and beautiful areas of Dorset.

Main entrance lobby from The Quay. Lifts to 5th floor. Hall, open plan lounge / dining room and kitchen areas. Fully fitted Miele kitchen. Comprehensively equipped. Master Bedroom (5ft kingsize double) with ensuite (bath and separate shower cubicle, sink and toilet). Second bedroom (4ft 6ins standard double). Family bathroom (bath, sink and toilet).

Parking - One reserved parking space in the development's own secure car park (max height 2m / 6ft 6ins).







Energy Efficiency Rating		
	Current	Potential
Very energy efficient - lower running costs		
(92 plus) A		
(81-91) B		
(69-80) C		
(55-68) D		
(39-54) E		
(21-38) F		
(1-20) G		
Not energy efficient - higher running costs		
England & Wales		
EU Directive 2002/91/EC		

Agent Note: Whilst every care has been taken to prepare these sales particulars, they are for guidance purposes only. All representations including descriptions, dimensions and photos are given, in good faith and are believed to be correct, but any intending purchaser should not rely on them as statements or representations of fact but must satisfy themselves as to their correctness. Appliances and central heating systems have not been checked by Quay Living or their employees and we recommend that purchasers instruct a qualified person to check all appliances / service before legal commitment.

01202 683444
Orchard Plaza, 41 High Street
Poole, Dorset, BH15 1EG
www.quayliving.co.uk

