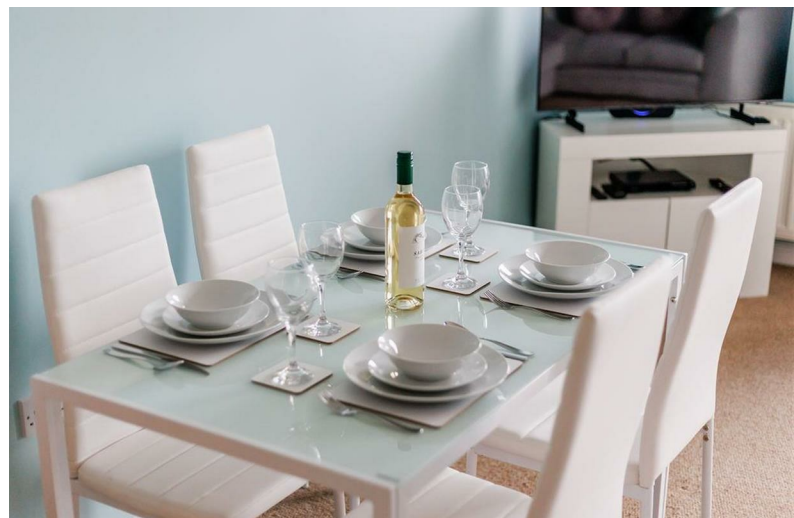


01202 683444

Orchard Plaza, 41 High Street
Poole, Dorset, BH15 1EG

www.quayliving.co.uk



HOLS - Ocean Breeze - 26 Guillemot House 17

Northon Way
Poole, BH15 4GD

£1,350 PCM



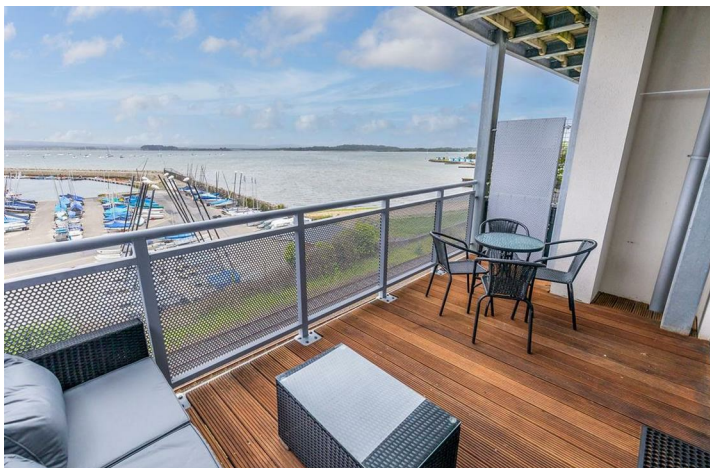
****3-5 MONTH LET ONLY****

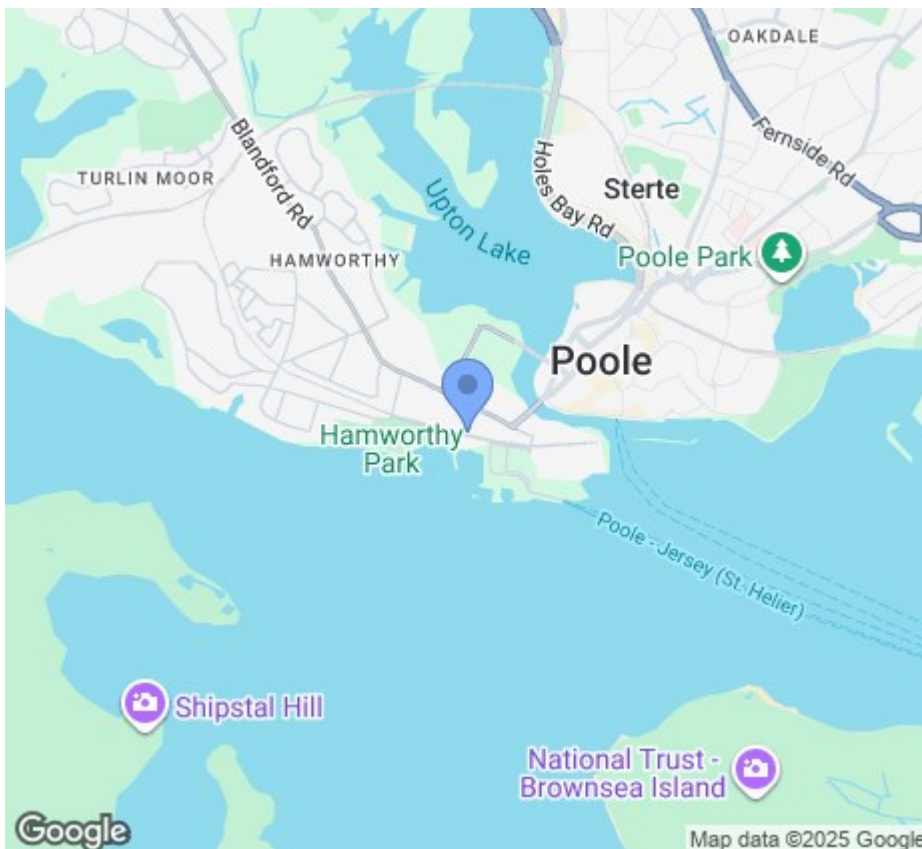
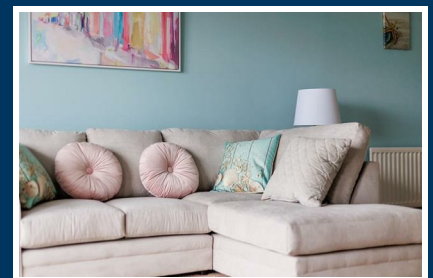
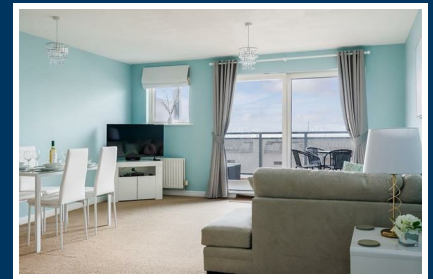
Two bedroom, two-bathroom apartment situated on the Harbour Reach development just south of Poole lifting bridge benefiting from a balcony with stunning harbour views. Located just opposite Hamworthy beach and park and only 10 minutes walk to Poole Quay and the town with all its facilities.

Lift and level access. Open plan Lounge / Dining area leading to a balcony with beautiful harbour views. Comprehensively equipped throughout. Fully fitted kitchen including gas hob, electric oven, fridge / freezer, dishwasher, microwave and washing machine. Master Bedroom with 5ft kingsize double bed and benefiting from ensuite bathroom (shower cubicle, sink and toilet). Second bedroom with 4ft 6ins double bed. Family bathroom (bath with shower over, toilet and sink).

Parking - One reserved parking space in the development's own gated parking area under the apartments. (max height 2.1m / 6ft 8ins) Extra visitor parking available - extra charges apply







Energy Efficiency Rating		
	Current	Potential
Very energy efficient - lower running costs		
(92 plus) A		
(81-91) B		
(69-80) C		
(55-68) D		
(39-54) E		
(21-38) F		
(1-20) G		
Not energy efficient - higher running costs		
England & Wales EU Directive 2002/91/EC		

Agent Note: Whilst every care has been taken to prepare these sales particulars, they are for guidance purposes only. All representations including descriptions, dimensions and photos are given, in good faith and are believed to be correct, but any intending purchaser should not rely on them as statements or representations of fact but must satisfy themselves as to their correctness. Appliances and central heating systems have not been checked by Quay Living or their employees and we recommend that purchasers instruct a qualified person to check all appliances / service before legal commitment.

01202 683444
Orchard Plaza, 41 High Street
Poole, Dorset, BH15 1EG
www.quayliving.co.uk

