

01202 683444

Orchard Plaza, 41 High Street
Poole, Dorset, BH15 1EG

www.quayliving.co.uk



HOLS - Anchor's Aweigh, Flat 402, Orchard

Plaza High Street
Poole, BH15 1EG

£1,250 Per Month

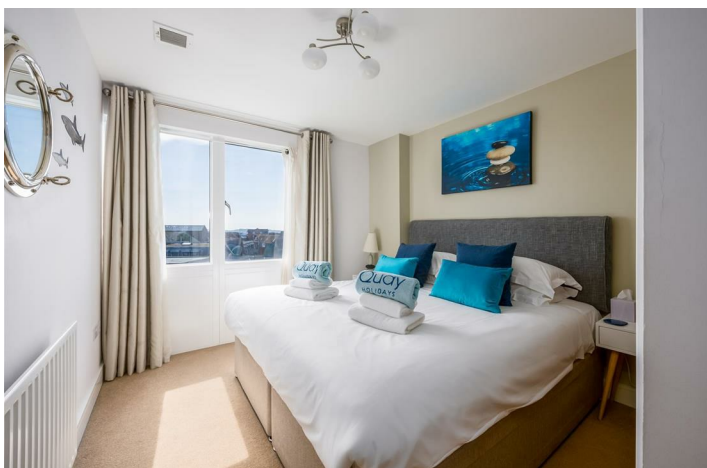


****3-5 MONTH LET ONLY****

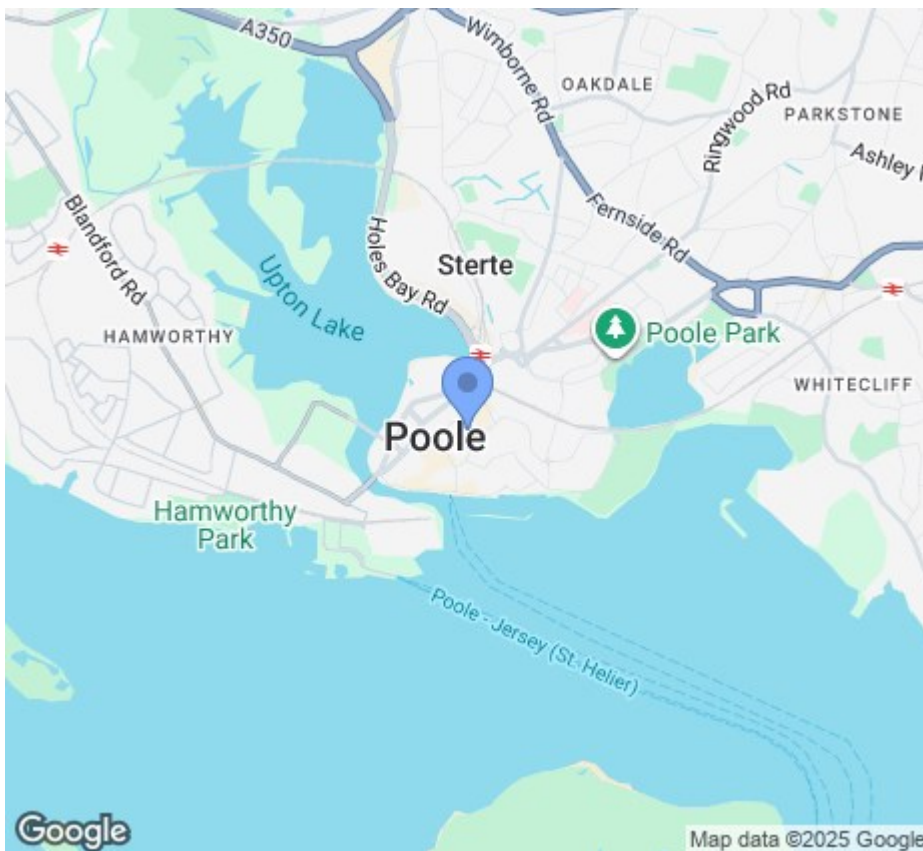
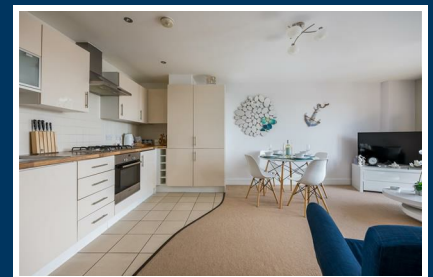
A fourth floor, two bedroom apartment conveniently located just a couple of minutes from numerous fantastic attractions, five minutes walk to the main shopping area and just a minutes' walk from the Quay and all its activities.

Modern apartment with open plan living, dining and kitchen area. The living area benefits from a TV and Wi-fi. Fully fitted kitchen area includes electric oven, gas hob and extractor fan. Also, dishwasher, fridge / freezer, microwave and washer / drying machine. There are two bedrooms - a Kingsize double bedroom and a further double bedroom. Family bathroom (bath with shower over, sink and toilet).

Parking – Parking permit provided for one vehicle in the adjacent Quay Visitors multi-storey car park. (max height 1.90m / 6ft 2ins).







Energy Efficiency Rating		
Very energy efficient - lower running costs	Current	Potential
(92 plus) A		
(81-91) B		
(69-80) C		
(55-68) D		
(39-54) E		
(21-38) F		
(1-20) G		
Not energy efficient - higher running costs		
England & Wales EU Directive 2002/91/EC		

Agent Note: Whilst every care has been taken to prepare these sales particulars, they are for guidance purposes only. All representations including descriptions, dimensions and photos are given, in good faith and are believed to be correct, but any intending purchaser should not rely on them as statements or representations of fact but must satisfy themselves as to their correctness. Appliances and central heating systems have not been checked by Quay Living or their employees and we recommend that purchasers instruct a qualified person to check all appliances / service before legal commitment.

01202 683444
Orchard Plaza, 41 High Street
Poole, Dorset, BH15 1EG
www.quayliving.co.uk

