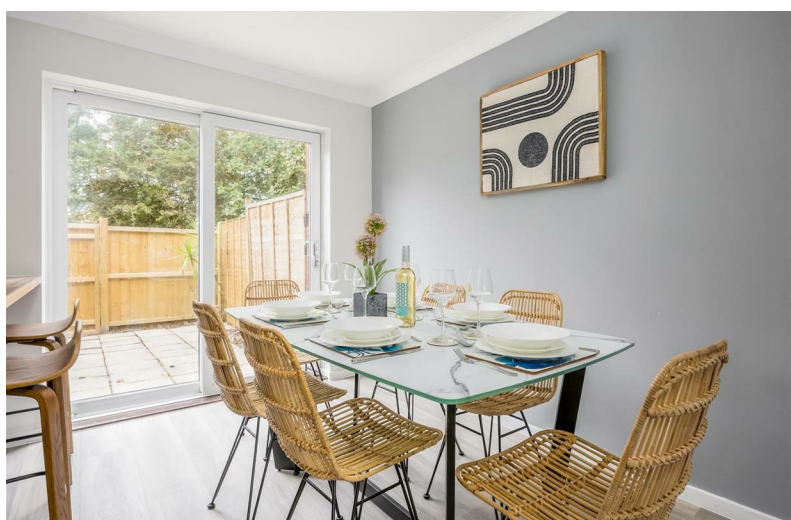


01202 683444

Orchard Plaza, 41 High Street

Poole, Dorset, BH15 1EG

www.quayliving.co.uk



HOLS - Shell Cove 50 Vallis Close

Poole, BH15 1XZ

£1,500

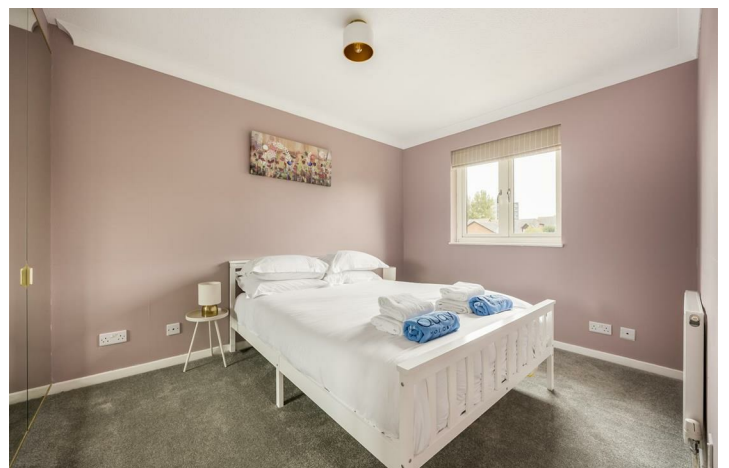


****AVAILABLE FOR 3-5 MONTH LET ONLY****

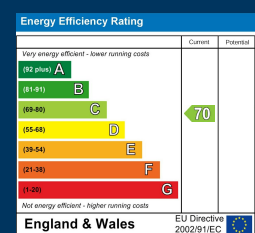
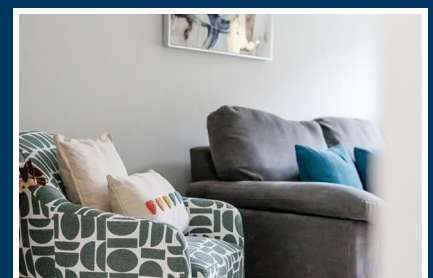
Contemporary three-bedroom house, sleeping up to five persons located on the popular Harbourside Park development just a few minutes walk to Poole Quay, the Town and all its facilities.

The property has been comprehensively furnished. On the ground floor there is a spacious open plan living, dining and kitchen area. Fully equipped with oven, hob, full-size fridge/freezer, microwave and washing machine. Stairs up to the first floor lead to three bedrooms. Master bedroom with kingsize double bedroom (5ft). Second bedroom with double bed (4ft 6in). Third single bedroom (3ft single). Family bathroom with bath with rainfall shower over, sink and toilet. From the living area there are doors leading to a patio garden area - ideal for al fresco dining!

Parking - Allocated parking space off road at the front of the property.







Agent Note: Whilst every care has been taken to prepare these sales particulars, they are for guidance purposes only. All representations including descriptions, dimensions and photos are given, in good faith and are believed to be correct, but any intending purchaser should not rely on them as statements or representations of fact but must satisfy themselves as to their correctness. Appliances and central heating systems have not been checked by Quay Living or their employees and we recommend that purchasers instruct a qualified person to check all appliances / service before legal commitment.

01202 683444
Orchard Plaza, 41 High Street
Poole, Dorset, BH15 1EG
www.quayliving.co.uk

