



2 Floors



4 Bedrooms



Utility



2 En suites

DAWLISH FOUR BEDROOM HOME

A four bedroom detached home comprising a spacious lounge and impressive kitchen / dining / family area with French doors opening onto the rear garden. Downstairs also includes a utility, study and cloakroom. Upstairs boasts four double bedrooms and the family bathroom, complete with a bath and separate shower enclosure. Bedrooms one and two feature en-suite shower rooms with the master benefitting from fitted wardrobes.

DAWLISH FOUR BEDROOM HOME

DIMENSIONS

First Floor:

Bedroom 1
3.08m x 4.71m
10'1" x 15'6"

En Suite

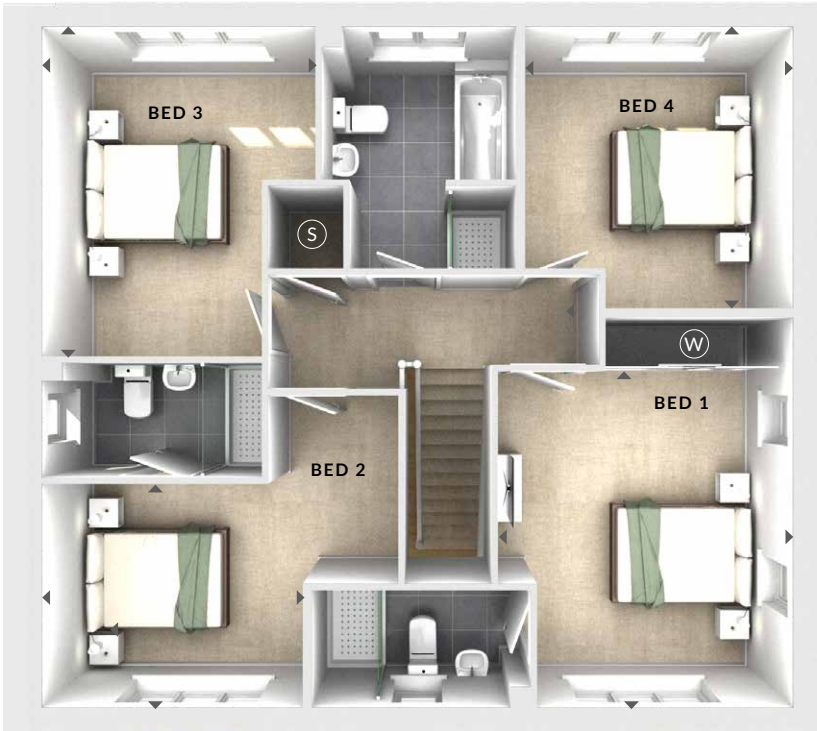
Bedroom 2
3.14m x 2.72m
10'4" x 8'11"

En Suite

Bedroom 3
3.30m x 3.98m
10'10" x 13'0"

Bedroom 4
3.23m x 3.39m
10'7" x 11'2"

Bathroom



First Floor

Ground Floor:

Lounge
3.48m x 4.78m
11'5" x 15'8"

Kitchen / Dining / Family
9.07m x 3.95m
29'9" x 13'0"

Study
3.14m x 2.15m
10'3" x 7'1"

Utility
1.99m x 1.89m
6'6" x 6'2"

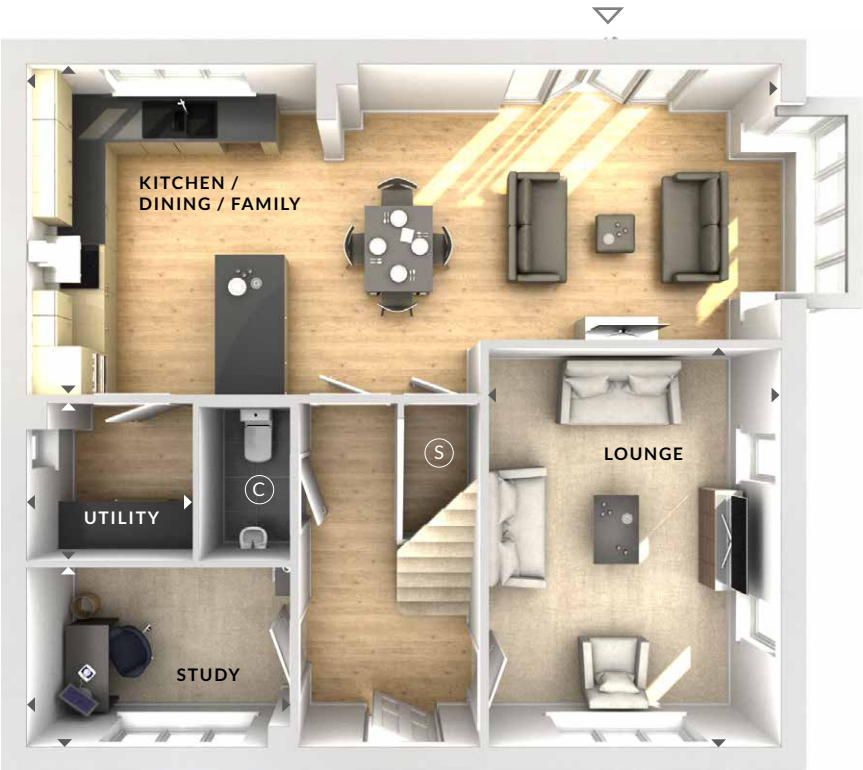
(W) Wardrobes

(S) Storage

(C) Cloaks

◀▶ Measurement Points

△ External Access



Ground Floor