



One double bedroom first floor flat benefitting from having a private rear garden and two reception rooms. Located close to excellent amenities, Chalkwell Park and the seafront.

- Please fill out the application form online
- Fitted Kitchen
- Four Piece Bathroom
- Double Glazing and Gas Central Heating
- Two Reception Rooms
- One Large Double Bedroom
- Private Garden

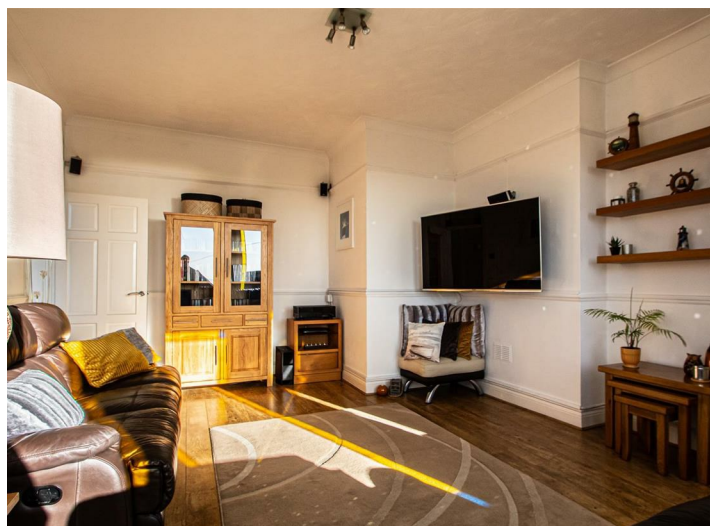
Kings Road

Chalkwell

£1,100



Kings Road



Proudly appointed in the heart of Chalkwell just minutes from the park and seafront is this one bedroom first floor flat. The property is situated close to London Road which is home to a range of amenities, along with convenient bus links. Both Chalkwell Park and Westcliff Train Stations are within easy reach, making the location ideal for commuters.

The property is well presented throughout and boasts two spacious reception rooms. Further accommodation presents a fitted kitchen, a larger than an average double bedroom and a four piece bathroom. To the rear, there is a private garden.

One Bedroom Flat to Let

Lounge

19'0 x 13'6

Dining Room

12'6 x 8'5

Kitchen

11'10 x 9'3

Bedroom

18'2 x 11'8

Four Piece Bathroom

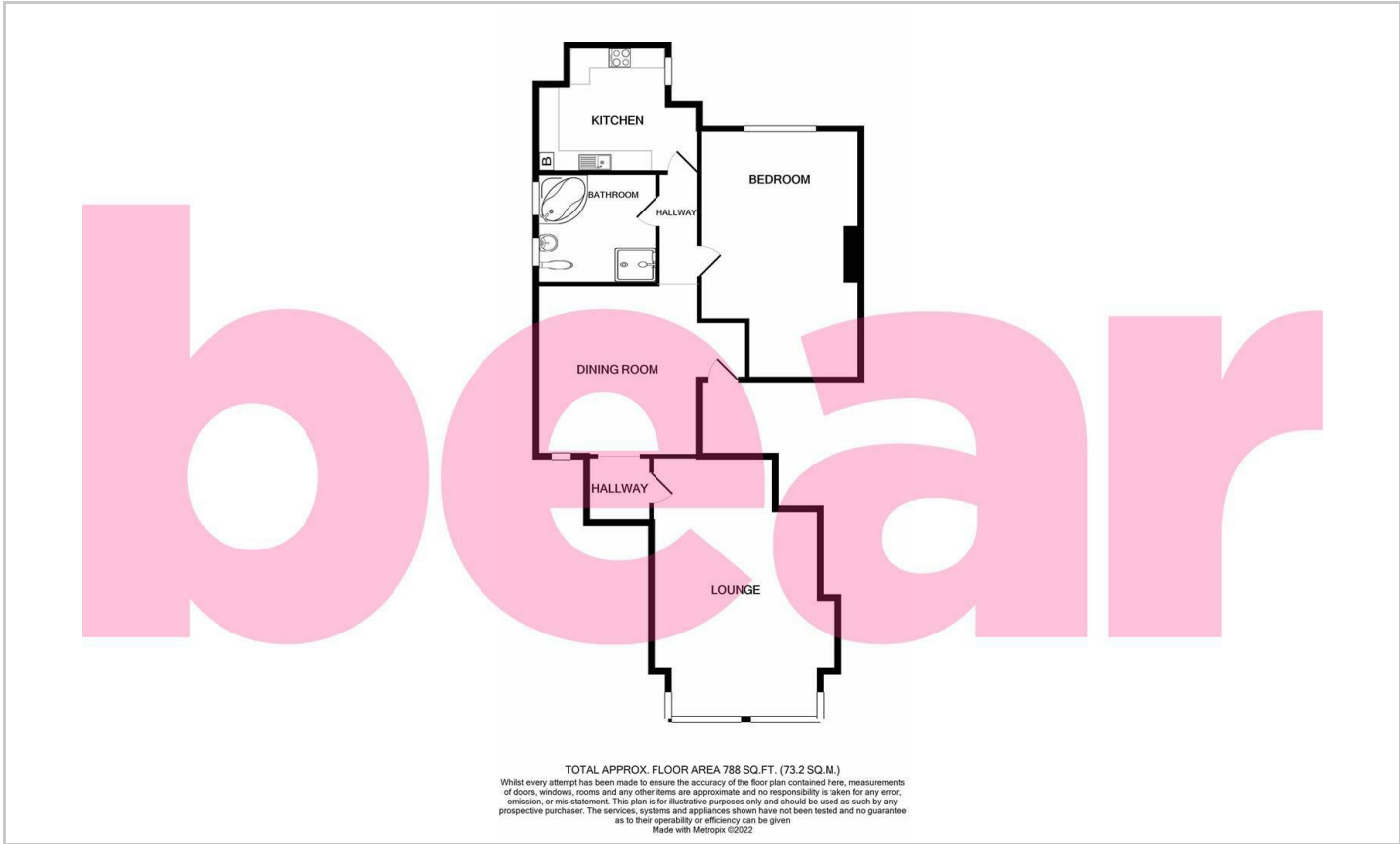
8'7 x 8'1

Private Garden

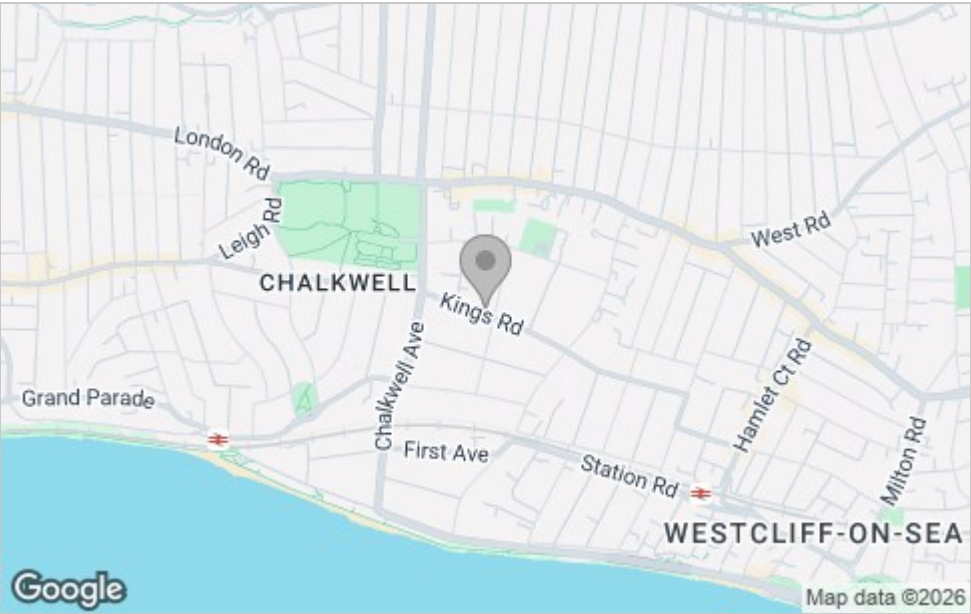
Pets Considered



Floor Plan



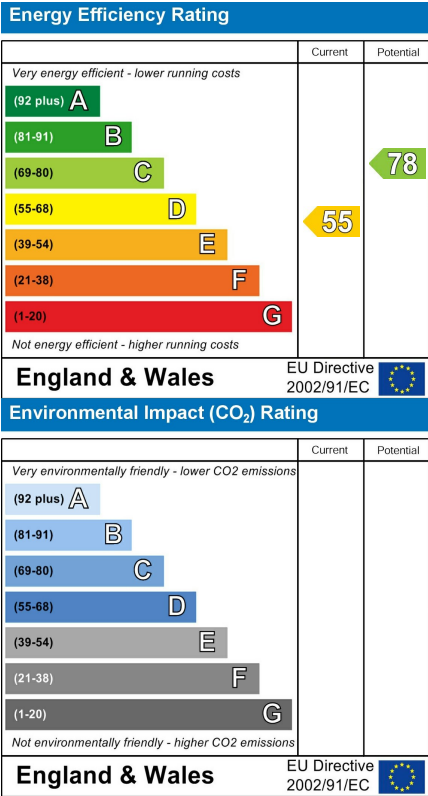
Area Map



Viewing

Please contact our Westcliff-on-Sea Office on 01702 899 780 if you wish to arrange a viewing appointment for this property or require further information.

Energy Efficiency Graph



These particulars, whilst believed to be accurate are set out as a general outline only for guidance and do not constitute any part of an offer or contract. Intending purchasers should not rely on them as statements of representation of fact, but must satisfy themselves by inspection or otherwise as to their accuracy. No person in this firms employment has the authority to make or give any representation or warranty in respect of the property.

797 London Road, Westcliff-on-Sea, Essex, SS0 9SY

Office: 01702 899 780 info@bearlettings.co.uk