



\* Please request a viewing online via Rightmove only - email agent or request details \* Deceptively spacious three double bedroom maisonette with accommodation over two floors. Further benefits from having an ensuite as well as a bathroom. Situated close to London Road for amenities and bus links, as well as local schools and excellent train connections.

- To request a viewing, please email agent or request details online to fill out an application form
- Large Dual Aspect Lounge
- Three Double Bedrooms
- Two Piece Bathroom and a WC
- Gas Central Heating
- Split Level Maisonette
- Kitchen/Diner
- Ensuite to the Master Bedroom
- Double Glazing

## Fairmead Avenue

Westcliff-on-Sea

**£1,400**



# Fairmead Avenue



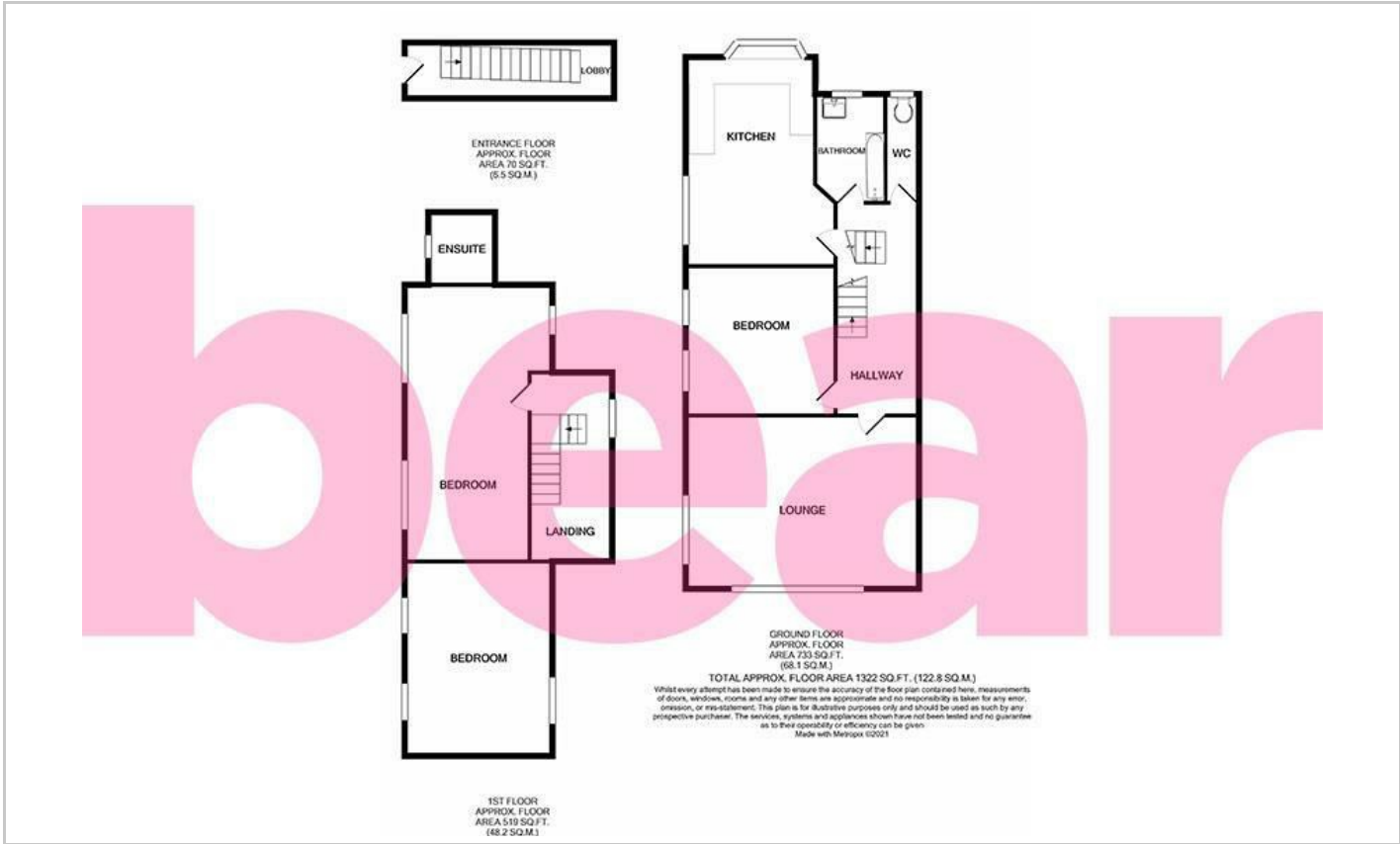
Bear Lettings are pleased to market this three bedroom maisonette in the heart of Westcliff-on-Sea. Internally, the accommodation has been well presented and offers living space spread over two floors. The first floor presents a large dual aspect lounge, a kitchen/diner with a bay window, a double bedroom, a two piece bathroom and a WC. Stairs to the second floor lead to two further double bedrooms and an ensuite to the master suite. The property further offers double glazing and gas central heating.

Fairmead Avenue is within walking distance of ample amenities including iconic parks and the seafront. Bus connections are within easy reach, as well as convenient train links. For families, there are well-regarded schools within the area.

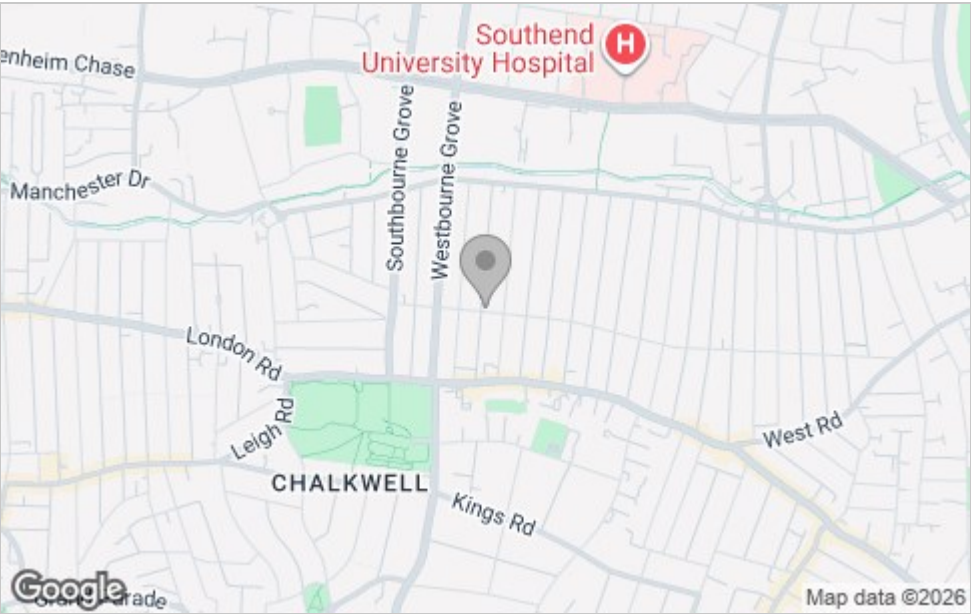




Floor Plan



Area Map



Viewing

Please contact our Westcliff-on-Sea Office on 01702 899 780 if you wish to arrange a viewing appointment for this property or require further information.

These particulars, whilst believed to be accurate are set out as a general outline only for guidance and do not constitute any part of an offer or contract. Intending purchasers should not rely on them as statements of representation of fact, but must satisfy themselves by inspection or otherwise as to their accuracy. No person in this firms employment has the authority to make or give any representation or warranty in respect of the property.

797 London Road, Westcliff-on-Sea, Essex, SS0 9SY

Office: 01702 899 780 info@bearlettings.co.uk

Energy Efficiency Graph

