



## Oxhouse Court, Milton Keynes MK5 7GL

OPEN HOUSE SOON! Book now. Repositioned to £600k, chain free. Opposite a popular school with home office, large garden & gazebo, and planning approved to create a 5th bedroom.

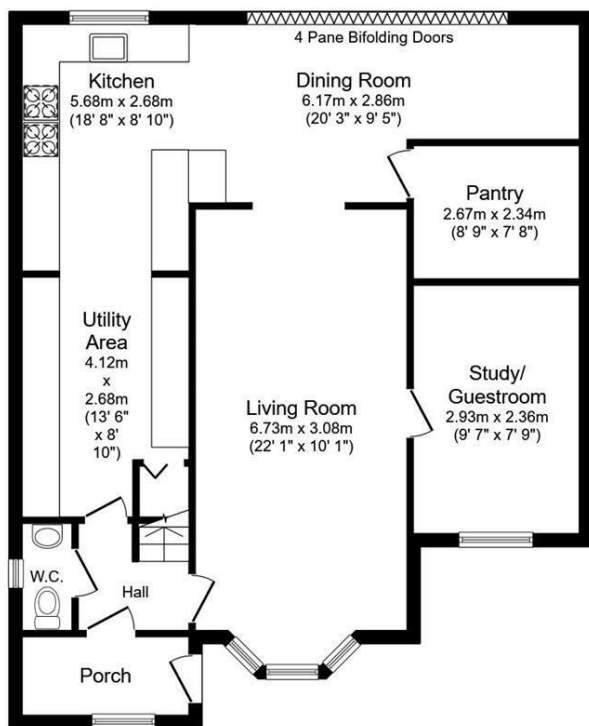
Welcome to this charming detached house located in the desirable Oxhouse Court, nestled within the tranquil area of Shenley Brook End, Milton Keynes. This delightful property, offers generous living space making it an ideal family home

As you enter, you are greeted by two spacious reception rooms, perfect for entertaining guests or enjoying quiet family evenings. The well-designed layout ensures that each room flows seamlessly into the next, creating a warm and inviting atmosphere. The house boasts four comfortable bedrooms, providing ample space for family members or guests. With two well-appointed bathrooms, morning routines will be a breeze, catering to the needs of a busy household.

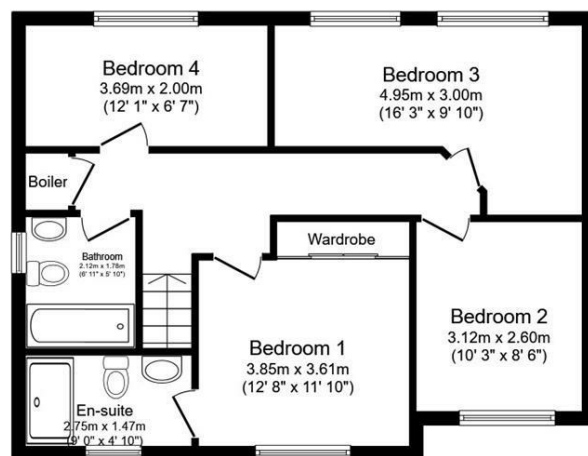
The exterior of the property features parking for up to three vehicles, ensuring convenience for you and your visitors. The surrounding area is known for its community spirit and offers a range of local amenities, including shops, schools, and parks, making it an excellent choice for families.

- Open House - Book now
- Opposite one of MK's most sought after schools
- Fully extended with skylit kitchen/diner
- Separate home-office building (WFH ready)
- Loft conversion approved for 5th bedroom
- Master bedroom with en-suite
- Generous garden with entertaining gazebo
- Driveway for multiple cars
- Walk-in pantry & ample storage
- Chain-free purchase

**£600,000**



**Ground Floor**



**First Floor**

Total floor area 146.2 sq.m. (1,573 sq.ft.) approx

This floor plan is for illustrative purposes only. It is not drawn to scale. Any measurements, floor areas (including any total floor area), openings and orientation are approximate. No details are guaranteed, they cannot be relied upon for any purpose and they do not form part of any agreement. No liability is taken for any error, omission or misstatement. A party must rely upon its own inspection(s). Powered by [www.focalagent.com](http://www.focalagent.com)

