



The Avenue, Queens Park

London NW6

£550,000



The Avenue

Queens Park, London NW6

Stunning apartment with private balcony,
concierge service and a private resident's gym.
Chain free / long lease.

Council Tax band: E

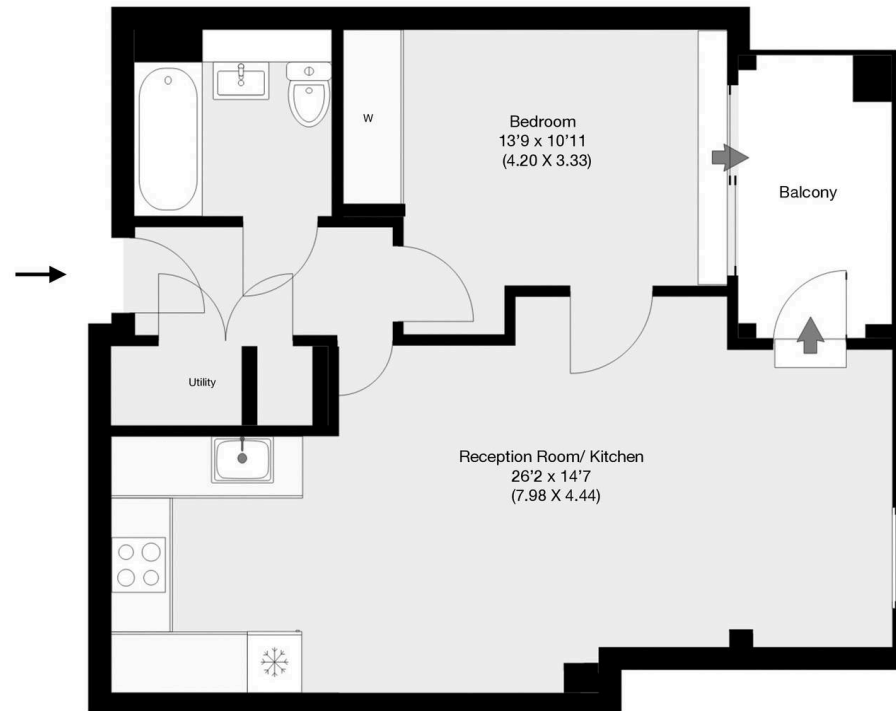
Tenure: Leasehold





The Avenue, London, NW6

Approximate Gross Internal Area 52.41 sqm / 564 sqft



First Floor

THIS FLOOR PLAN IS PRODUCED FOR GARRISON ESTATES SUBMITTED BY **ARCHIMEDIA** web: www.archi-media.co.uk

Whilst every attempt has been made to ensure the accuracy of the floor plan contained here, measurements of doors, windows and rooms are approximate and no responsibility is taken for any error, omission or misstatement. These plans are for representation purposes only and should be used as such by any prospective buyer or lease. Specifically no guarantee is given on the gross internal floor area of the property if quoted on this plan and any figures given is initial guidance only and should be treated as such.



Garrison Estates

20 College Parade, Salusbury Road, Queens Park – NW6 6RN

020 4511 4820 • contact@garrisonestates.co.uk • www.garrisonestates.co.uk/