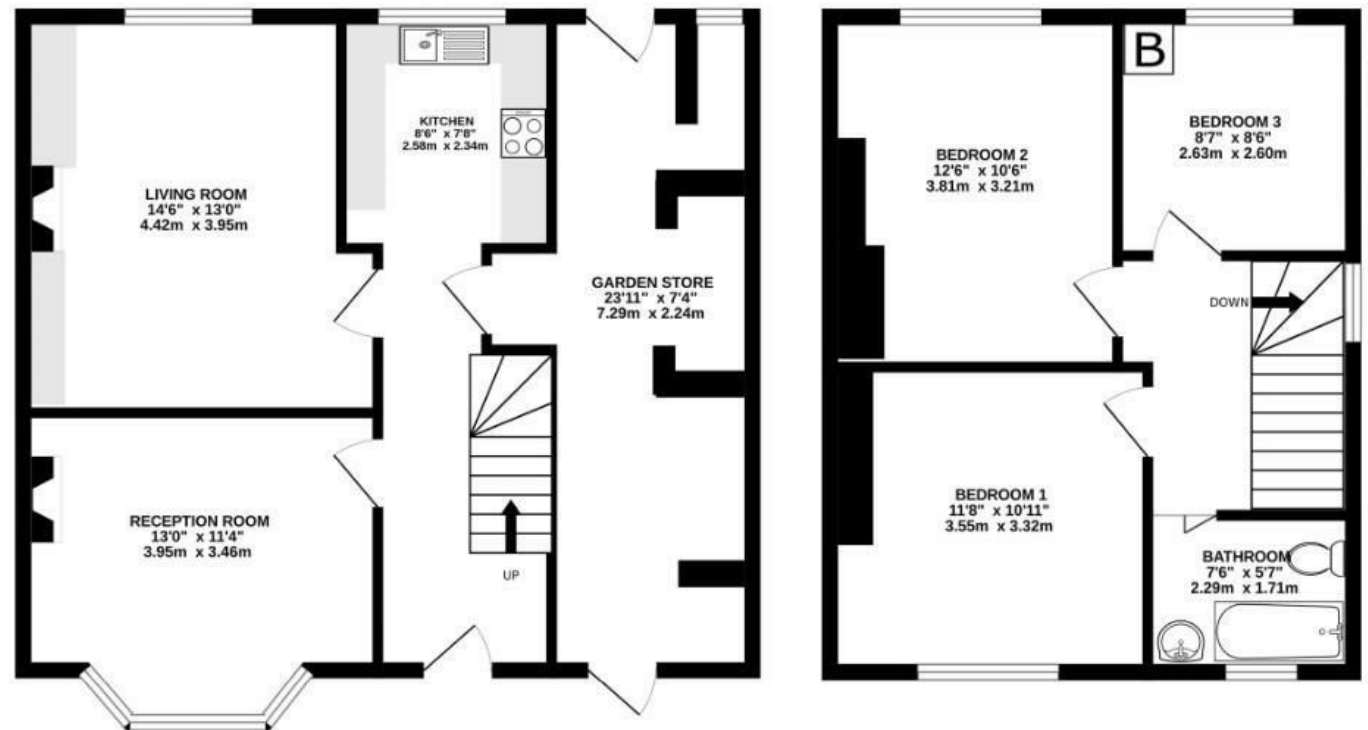


Doncaster Road

SOUTHMEAD

APPROXIMATE FLOOR AREA
98.5 SQM / 1060 SQFT



Illustrations are for reference purposes only, measurements are approximate, not to scale.

Boardwalk

Doncaster Road

SOUTHMEAD, BRISTOL

£

£300,000

zzz

3 Bedrooms



BS10 5PZ



1 Bathrooms

"The home is opposite a Doctor's surgery, sports facilities, and a community cafe. There's a large park just up the road, The Ranch, a great place for children looking for adventure, to learn skills and socialise in a safe place. The hospital is less than 5 minutes by car. All shops, local eateries and public houses are a short walking distance. A great community feel with lifelong great neighbours. My parents lived there very happily for over 50 years."

