

Mayors Road CLAVERTHAM

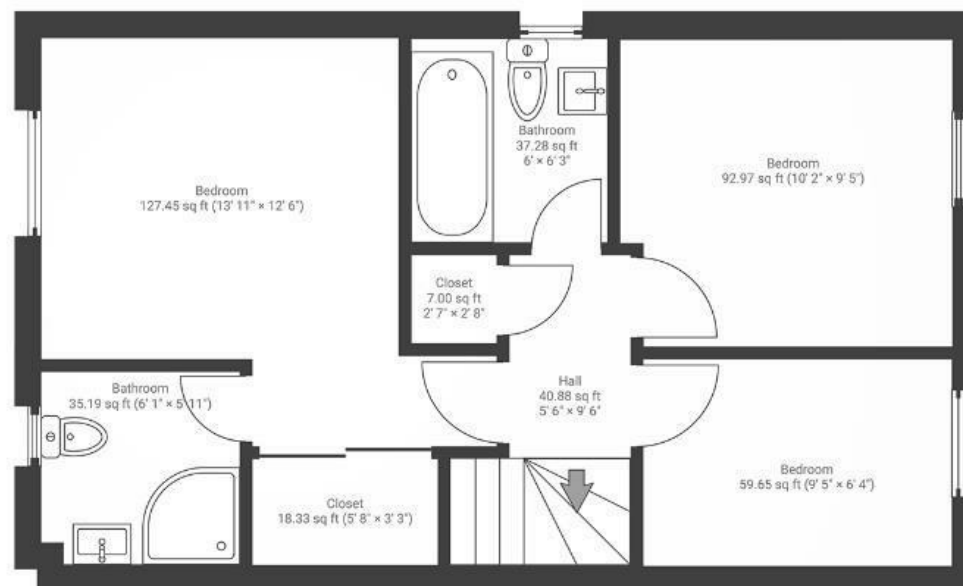
APPROXIMATE FLOOR AREA
89 SQM / 958 SQFT



GROUND FLOOR



FIRST FLOOR



Boardwalk

Mayors Road

CLAVERHAM, BRISTOL



£350,000



3 Bedrooms



BS49 4GG



2 Bathrooms

"We have truly loved living here, and if it weren't for needing more space, we wouldn't be moving at all.

Our neighbours are genuinely lovely, there's a real sense of community — from having cat sitters on tap to the children happily playing out the front in warmer weather.

The area is calm and peaceful, with birdsong as a daily soundtrack. There are wonderful walks just minutes away, including Cadbury Hill and Goblin Combe.

There is a monthly village hall market, with homemade cakes, bacon sandwiches and some great crafty bargains."

