

Boardwalk

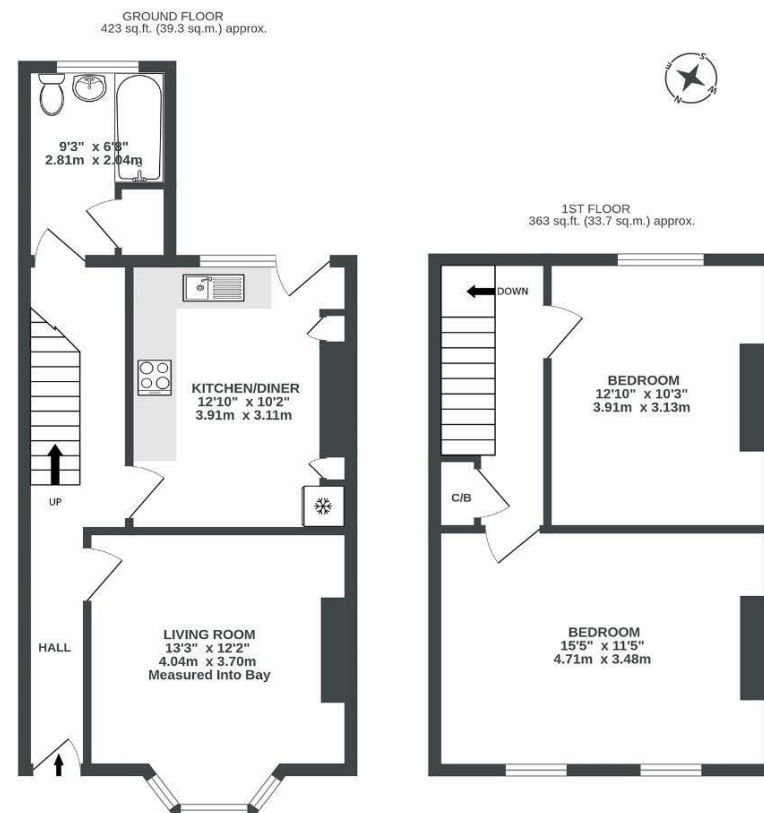
William Street

TOTTERDOWN, BRISTOL

William Street

TOTTERDOWN

APPROXIMATE FLOOR AREA
73 SQM / 786 SQFT



Illustrations are for reference purposes only, measurements are approximate, not to scale.

Boardwalk

William Street

TOTTERDOWN, BRISTOL



£350,000



2 Bedrooms



BS3 4TY



1 Bathrooms

"I've loved my time here over the past five years. The location couldn't be more convenient, with the train station, Victoria Park, Harbourside and city centre all within a 30-minute walk. Just down the road are the Bakehouse, Sundial Kitchen and a selection of pubs that I've regularly enjoyed taking friends to. The house itself has been a wonderful first home and feels particularly spacious for a two-bedroom property. I've enjoyed updating it during my time here, especially being able to cook in the new kitchen. The garden is a real highlight, getting sun for much of the day and providing the perfect space for summer entertaining and morning coffees."

