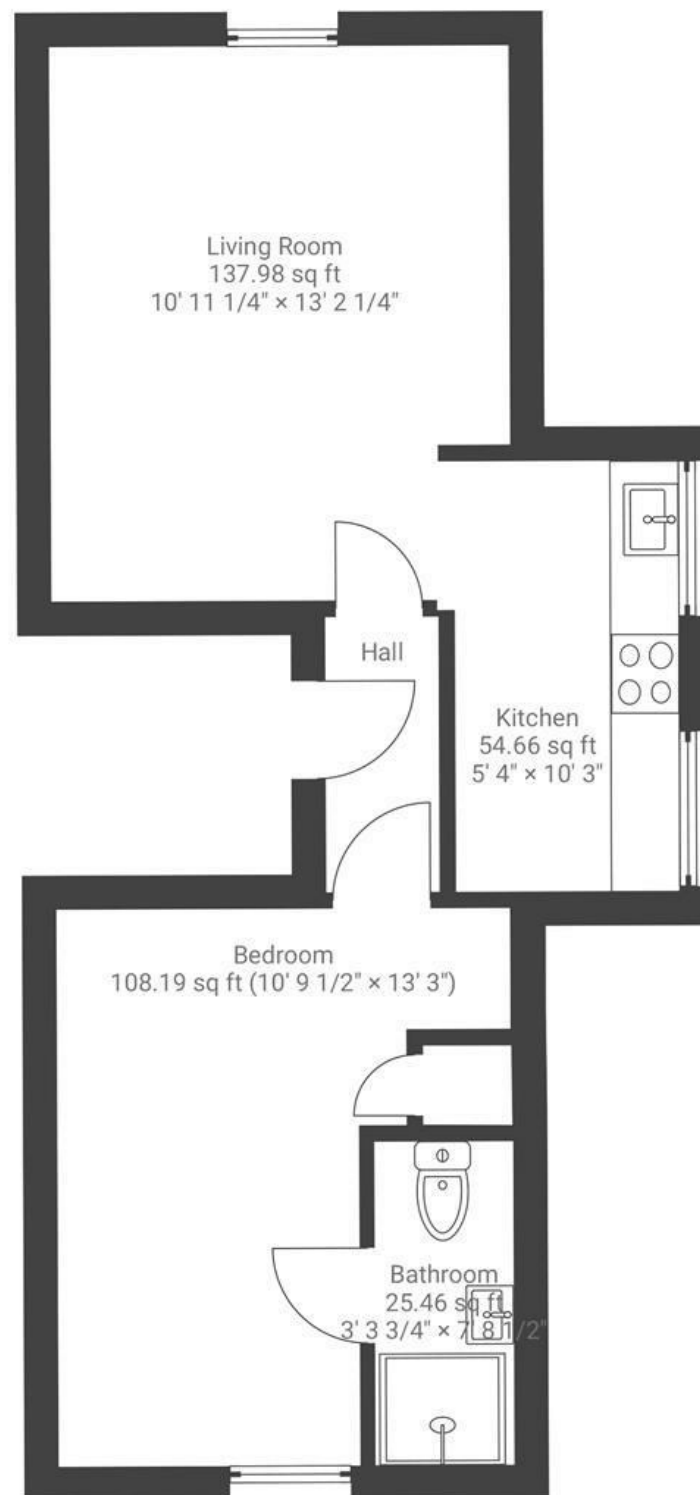


Warwick Road

REDLAND

APPROXIMATE FLOOR AREA
33.9 SQM / 365 SQFT



Boardwalk

Warwick Road

REDLAND, BRISTOL

£

£235,000



BS6 6HE

zzz

1 Bedrooms



1 Bathrooms

"As soon as I saw this gorgeous apartment I knew it was the perfect fit. My partner and I love the lifestyle of living in such a vibrant neighbourhood with so much to do (Bravas tapas, Everyman cinema and Clifton Down park are some of our favourites). Or if we want to relax, my happy place is preparing food in the beautiful bright kitchen whilst listening to the gentle chatter of friends enjoying the warm welcoming living room. I hope that the next person finds it just as happy a haven!"

