

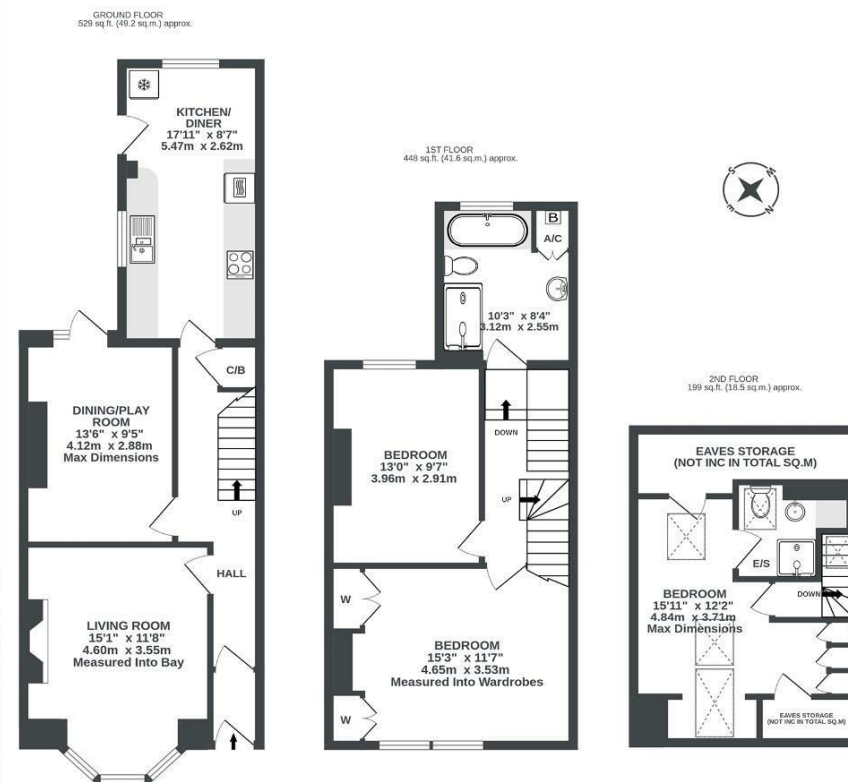
Boardwalk

Beauley Road

SOUTHVILLE, BRISTOL

Beauley Road SOUTHVILLE

APPROXIMATE FLOOR AREA
109.3 SQM / 1176 SQFT



Illustrations are for reference purposes only, measurements are approximate, not to scale.

Boardwalk

Beauley Road

SOUTHVILLE, BRISTOL



£575,000



3 Bedrooms



BS3 1PY



2 Bathrooms

"Over the past six years, the house has become the heart of our family life and the first home for our two daughters. The south-west-facing garden is our little sanctuary - a peaceful, private, sunny spot. The street itself has such a welcoming, neighbourly feel - people look out for each other, and it's a genuine community. This house has given us so many happy memories, and we hope the next owners will love it just as much."

