

North Street DOWNEND

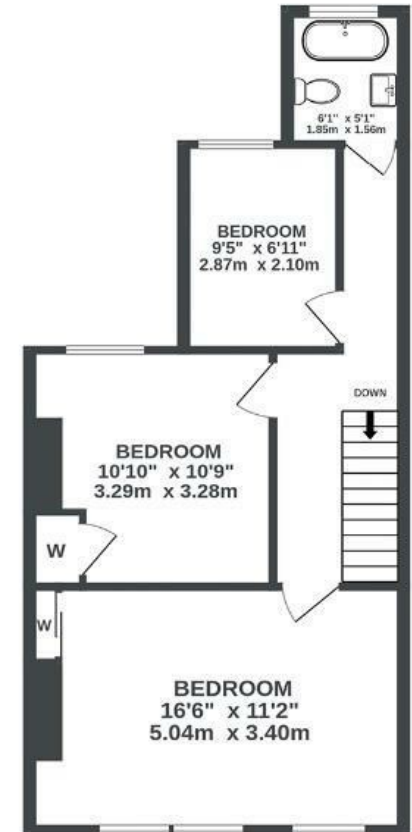
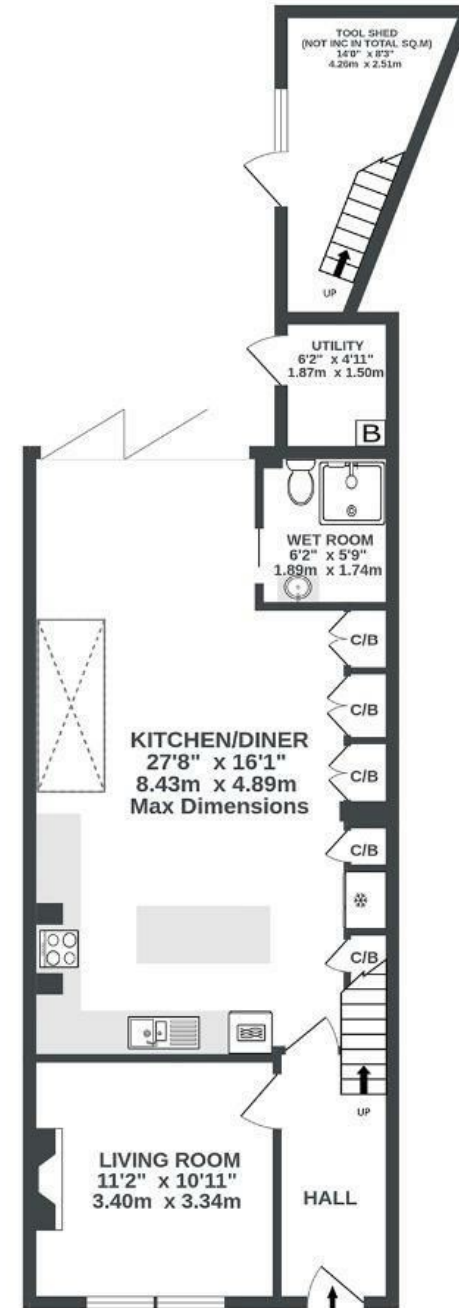
APPROXIMATE FLOOR AREA
103.8 SQM / 1118 SQFT



GROUND FLOOR
642 sq.ft. (59.7 sq.m.) approx.

1ST FLOOR
475 sq.ft. (44.2 sq.m.) approx.

GARDEN ROOM/OFFICE
0 sq.ft. (0.0 sq.m.) approx.



Illustrations are for reference purposes only, measurements are approximate, not to scale.

Boardwalk

North Street

DOWNEND, BRISTOL

£

£550,000

z^z

3 Bedrooms



BS16 5SF



3 Bathrooms

"We have lovingly restored period features, including unearthing the original floorboards, brick fireplace and picture rails, whilst adding a modern and open living space. The kitchen is top of the range from Howdens, installed only a few years ago, with granite worktops throughout. The bathroom and wet room are both meticulously planned, and fitted for style and function."

