

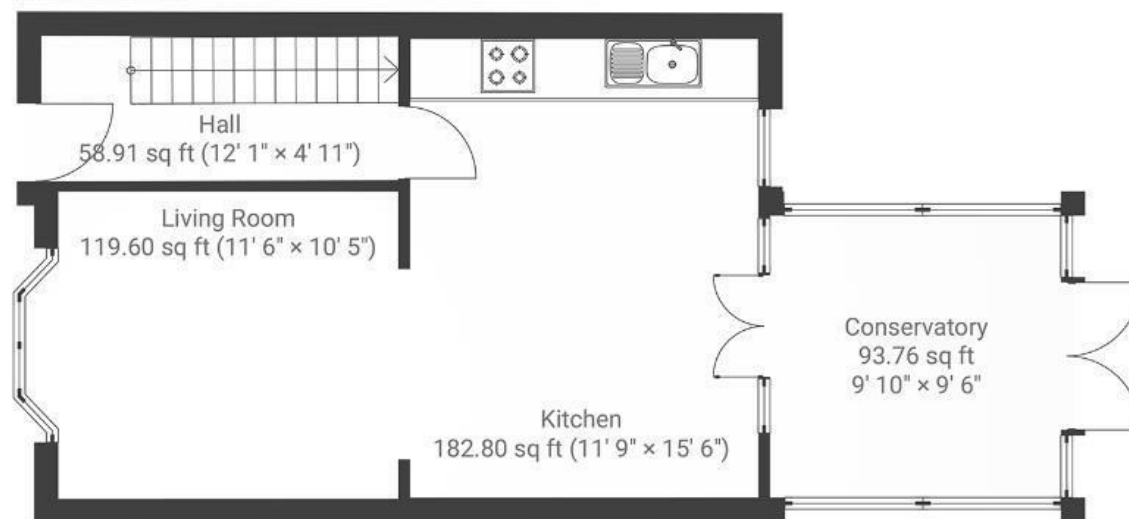
Woodbine Street

WHITEHALL

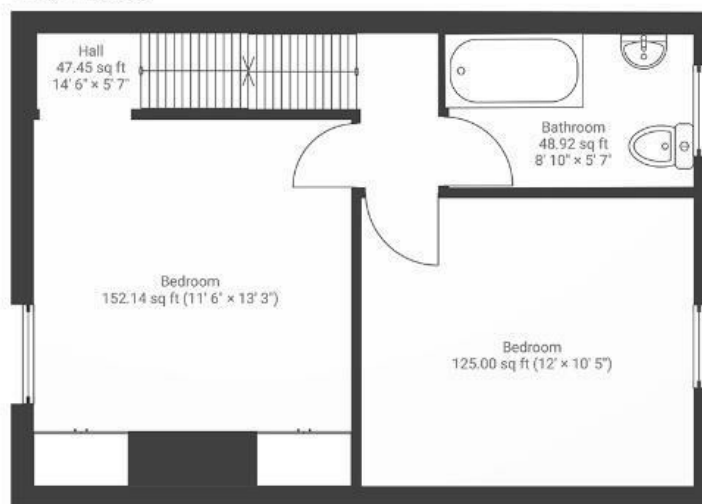
APPROXIMATE FLOOR AREA
95 SQM / 1020 SQFT



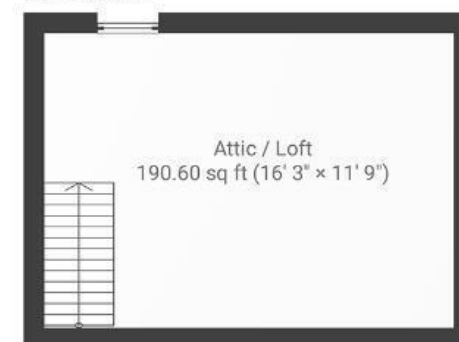
GROUND FLOOR



FIRST FLOOR



LOFT ROOM



Boardwalk

Woodbine Road

WHITEHALL, BRISTOL

£

£375,000



BS5 9AJ

zzz

2 Bedrooms



1 Bathrooms

"We love living here! The house is great - the open plan kitchen/dining room is bright and airy. The garden was one of the first things that appealed to us though, the plum tree, the grape vine and the old wall at the back make it feel like a little cottage garden in the city. St George is a great area with lovely parks and walks nearby, and being close to both Church Road and Easton means that every amenity is on your doorstep. Loaf is a personal favourite for a weekend treat!"

