

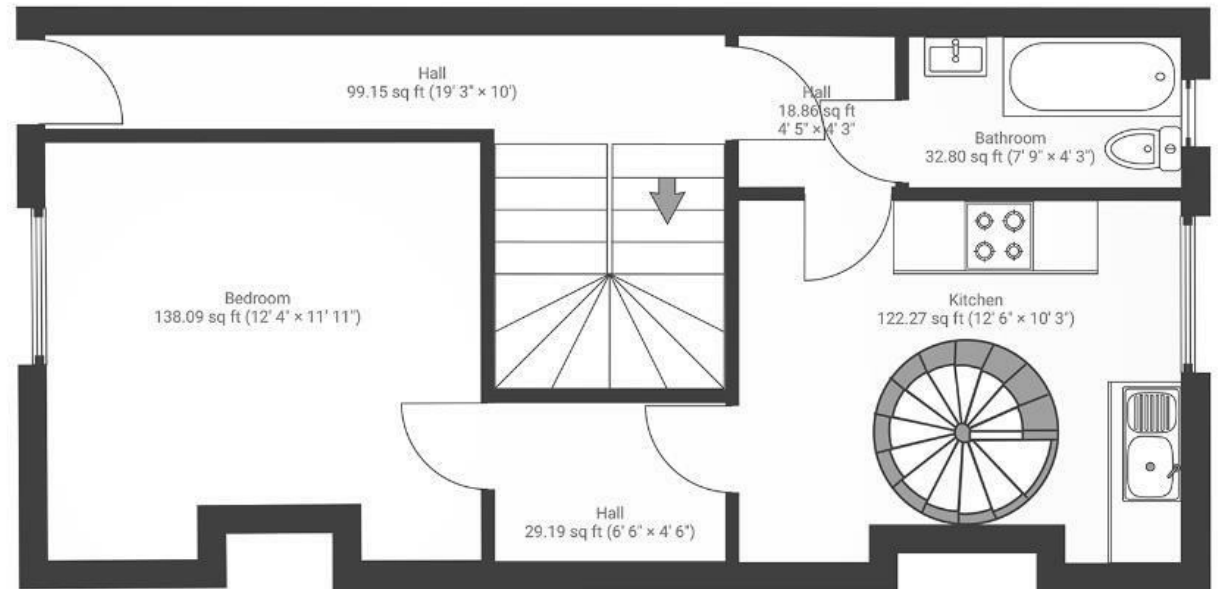
# Bath Buildings

## MONTPELIER

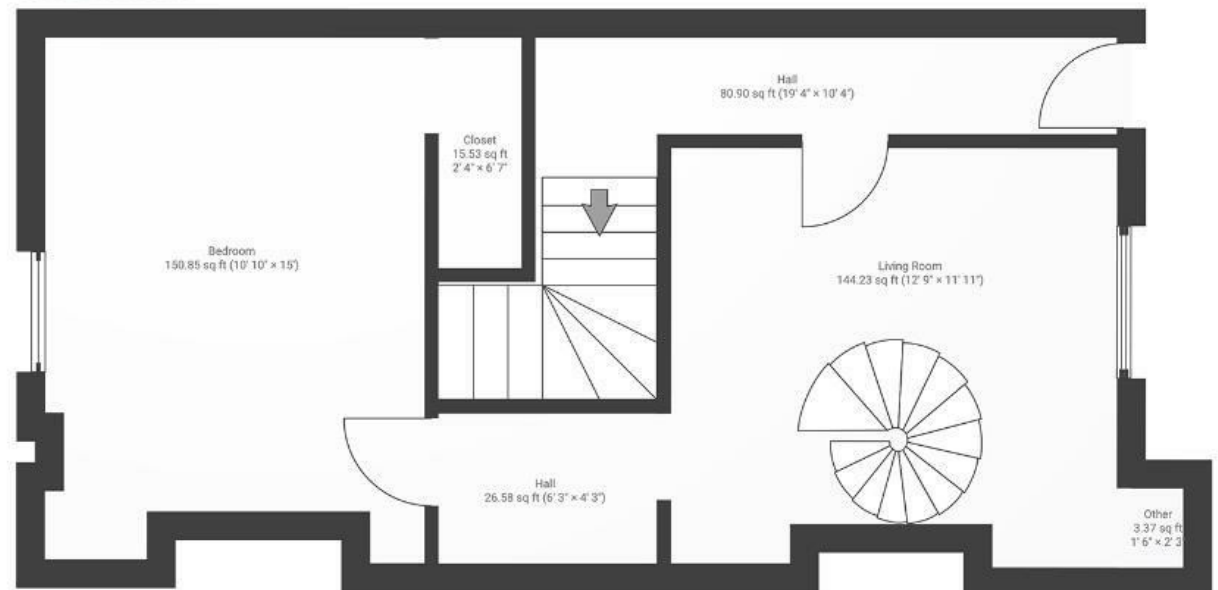
APPROXIMATE FLOOR AREA  
84 SQM / 904 SQFT



GROUND FLOOR



LOWER GROUND



Boardwalk

# Bath Buildings

MONTPELIER, BRISTOL



£365,000



2 Bedrooms



BS6 5PT



1 Bathrooms

*"What I love most about this flat is that it's full of character, with the spiral staircase, exposed brick, and walk-in wardrobe downstairs, which offers lots of handy storage. The Georgian windows bring in loads of natural light over both floors, making the whole place feel bright and spacious. The large garden is another highlight and is a lovely spot to sit out in during the summer. Bath Buildings is a great road to live on — close to the restaurants and cafés, yet still wonderfully peaceful."*

