

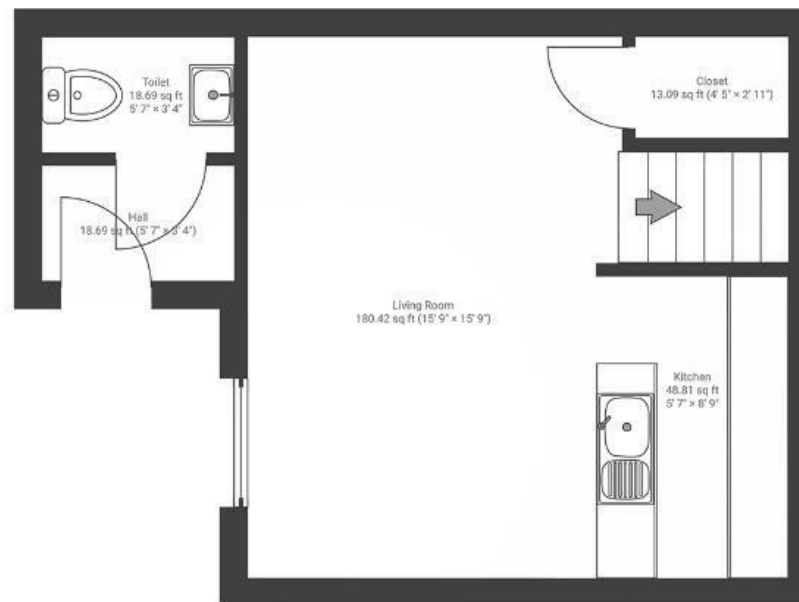
Snowberry Walk

ST. GEORGE

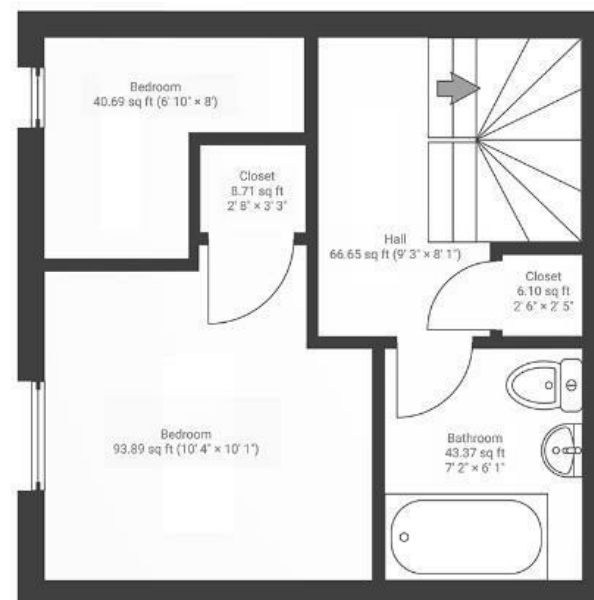
APPROXIMATE FLOOR AREA
54 SQM / 581 SQFT



GROUND FLOOR



FIRST FLOOR



Boardwalk

Snowberry Walk

ST. GEORGE, BRISTOL



£300,000



2 Bedrooms



BS5 7DG



2 Bathrooms

"Snowberry Walk was a great first home, we loved living in this community and now our tenants do too. The Bristol & Bath Railway Path is just a few minutes from the front door, 13 miles of peaceful traffic free path all the way to Bath!"

