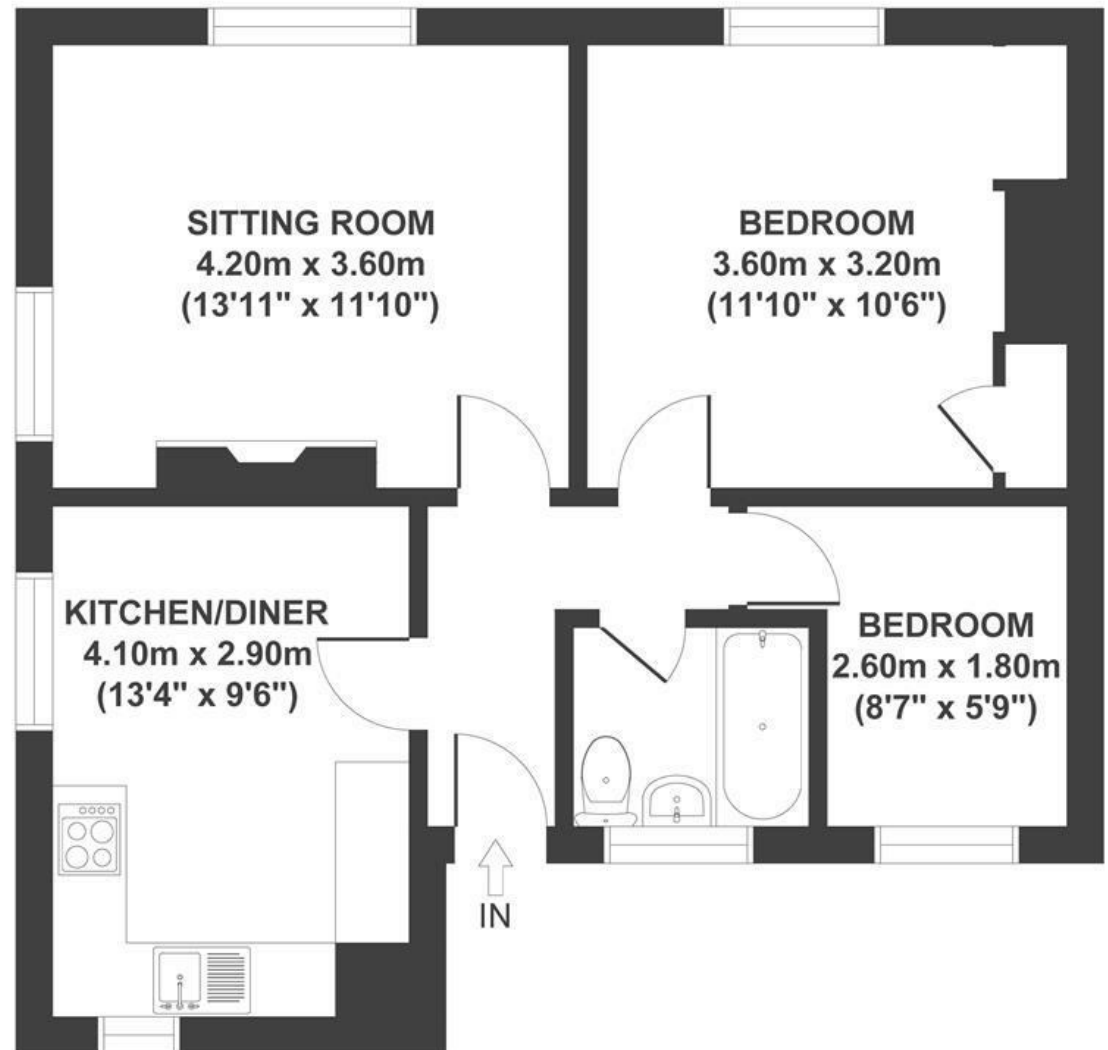


# Hillsborough Flats

## HOTWELLS

APPROXIMATE FLOOR AREA  
55 SQM / 592 SQFT



**Boardwalk**

# Hillsborough

HOTWELL ROAD, BRISTOL



£285,000



2 Bedrooms



BS8 4SP



1 Bathrooms

*"Living in our flat, we love being in striking distance of so many of our favourite places: Bristol harbourside, Brandon Hill, Clifton Village, Ashton Court. From every window in the flat we can see greenery and the variety of birds that feed outside our kitchen window, at eye level, have helped to make the flat feel connected with nature. In warm months it's lovely to sit outside with a drink and catch the evening sun, looking out onto more trees."*

