

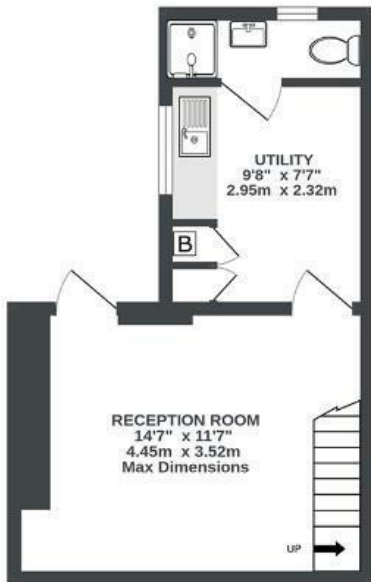
# Mendip Road

## BEDMINSTER

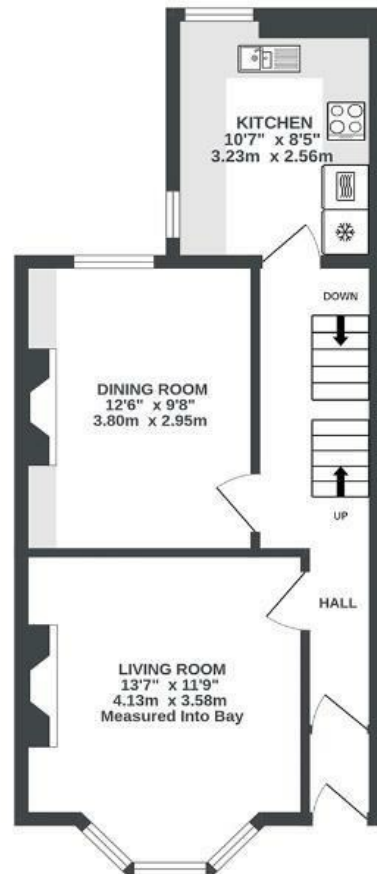
APPROXIMATE FLOOR AREA  
125.3 SQM / 1349 SQFT



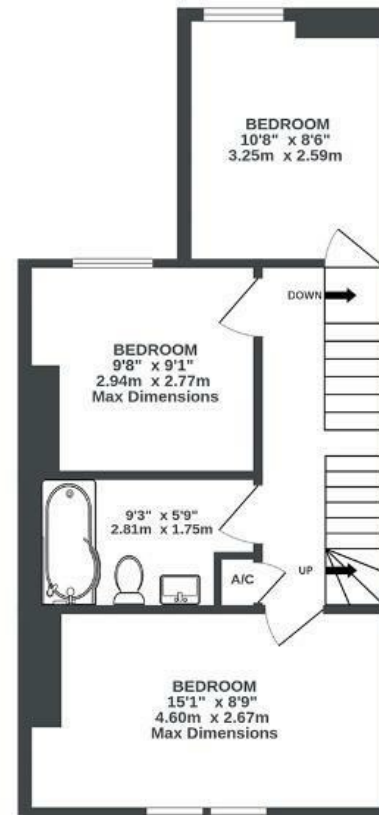
LOWER GROUND FLOOR  
262 sq.ft. (24.4 sq.m.) approx.



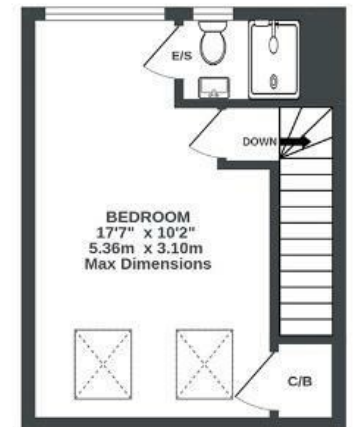
GROUND FLOOR  
436 sq.ft. (40.5 sq.m.) approx.



1ST FLOOR  
431 sq.ft. (40.0 sq.m.) approx.



2ND FLOOR  
221 sq.ft. (20.5 sq.m.) approx.



Illustrations are for reference purposes only, measurements are approximate, not to scale.

**Boardwalk**

# Mendip Road

, BRISTOL

---



£525,000



4 Bedrooms



BS3 4NY



3 Bathrooms

---

*" We love our vast view over Bristol, and enjoy watching the balloons drift by or the sky light up with fireworks. I've enjoyed infusing this home with character through colourful decor and have also landscaped the garden, where we enjoy the afternoon sunshine. Mendip Road boasts a strong sense of community, including an active WhatsApp group, festive window competitions, and a new monthly 'Playing Out' initiative. Victoria Park is on our doorstep, perfect for walks, and enjoying the community tennis club. We love living near North Street and make the most of its independent restaurants and shops. Windmill Hill itself has a wonderful community spirit, with local initiatives like Art on the Hill and Windmill Hill City Farm. "*

