

Boardwalk

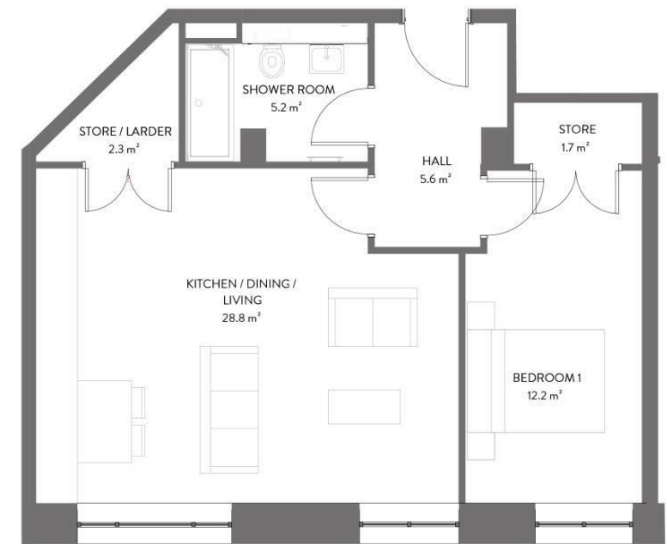
The Chocolate

, BRISTOL

The Chocolate Factory

GREENBANK

APPROXIMATE FLOOR AREA
57.6 SQM / 620 SQFT



Illustrations are for reference purposes only, measurements are approximate, not to scale.



Boardwalk

The Chocolate

, BRISTOL



£285,000



BS5 6HP



1 Bedrooms



1 Bathrooms

'Every aspect of the regeneration project of the former Elizabeth Shaw Chocolate Factory has been thoughtfully designed to compliment the surrounding homes and maintain the history of the site. Old, industrial buildings blend with new modern structures to create a development that benefits the whole neighbourhood. The site spans nearly 4.5 acres and will have links onto the Bristol and Bath Railway Path.'

