

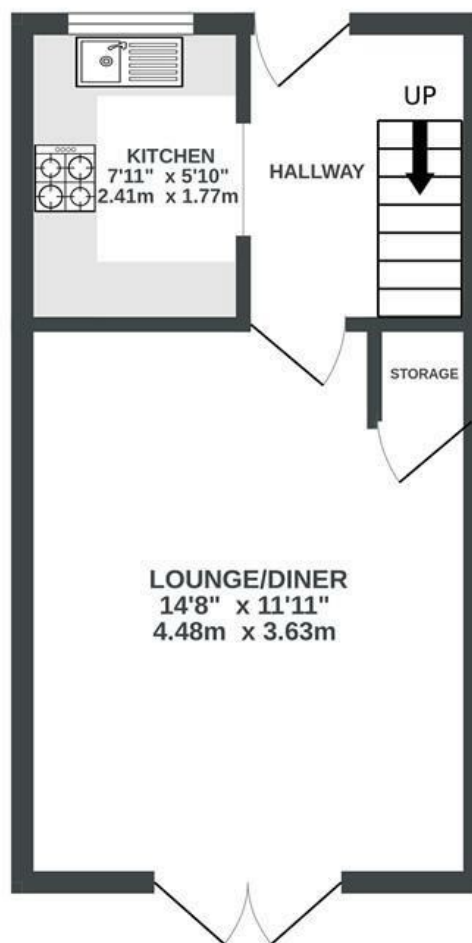
# The Stepping Stones

## ST. ANNES PARK

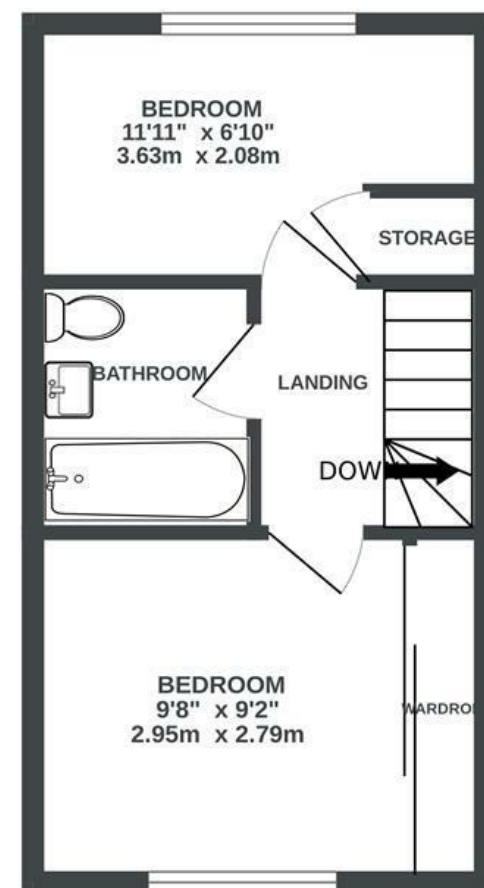
APPROXIMATE FLOOR AREA  
50 SQM / 538 SQFT



GROUND FLOOR



1ST FLOOR



Boardwalk

# The Stepping

## ST. ANNES PARK, BRISTOL

---

£

£240,000

zzz

2 Bedrooms



BS4 4EY



1 Bathrooms

---

*"The nature on our doorstep is our favourite thing. St Anne's Wood, the river path, wild swimming at Conham, whilst having easy access to central Bristol. Also the growing community in St Annes with St Anne's House (cafe, art pop ups, car boot sales, gym, sauna), great local yoga classes, Catley's Bakery, and then lovely independent stuff on Church Road in walking distance (Small City Bookshop, Southville Deli, Preserve, Native Vine). The perfect balance between city and community."*

