

Bedminster Road

B E D M I N S T E R

APPROXIMATE FLOOR AREA
81.9 SQM / 882 SQFT

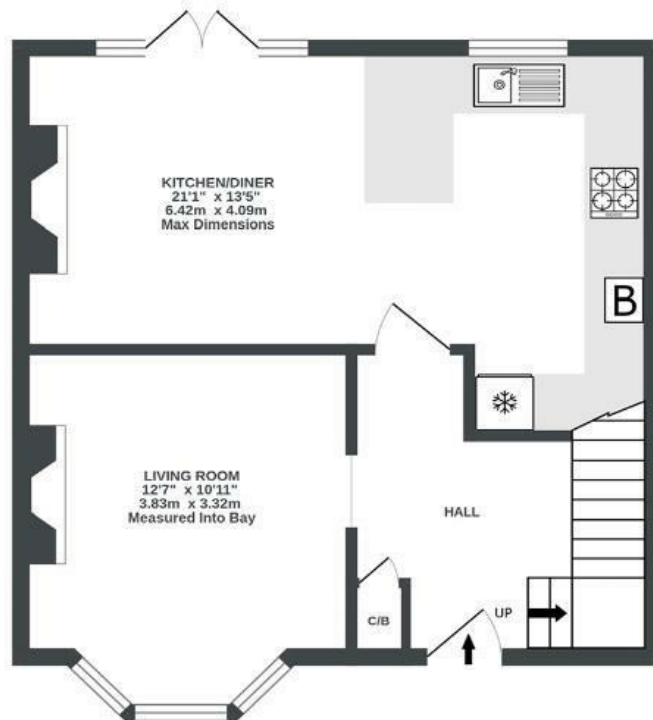


GARAGE (NOT IN SITU)
0 sq. ft. (0.0 sq. m.) approx.

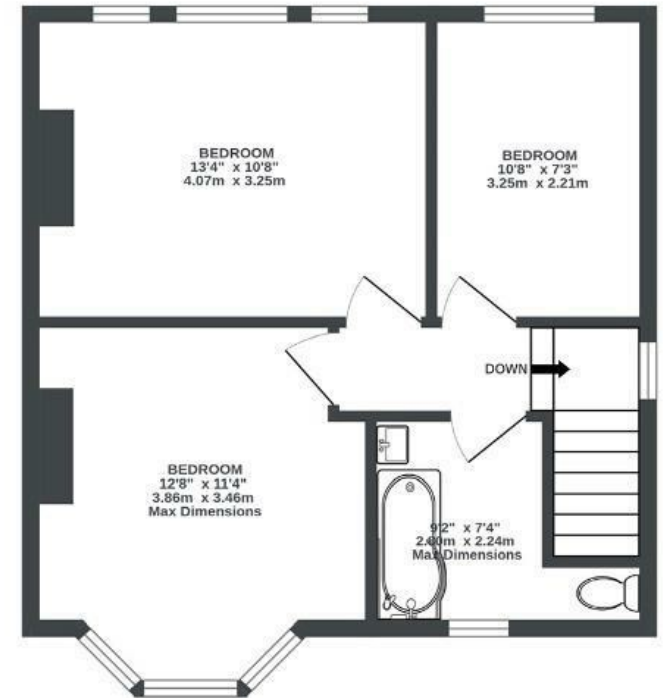
GARAGE
(NOT INC IN TOTAL SQ.M)
19'3" x 8'4"
5.86m x 2.53m



GROUND FLOOR
442 sq. ft. (41.0 sq. m.) approx.



1ST FLOOR
440 sq. ft. (40.9 sq. m.) approx.



Illustrations are for reference purposes only, measurements are approximate, not to scale.

Boardwalk

Bedminster Road , BRISTOL



£500,000



3 Bedrooms



BS3 5NX



1 Bathrooms

“This was our first home, and we fell in love with the large sunny garden — it’s been our little sanctuary for working, relaxing, and letting the dog play.”

