

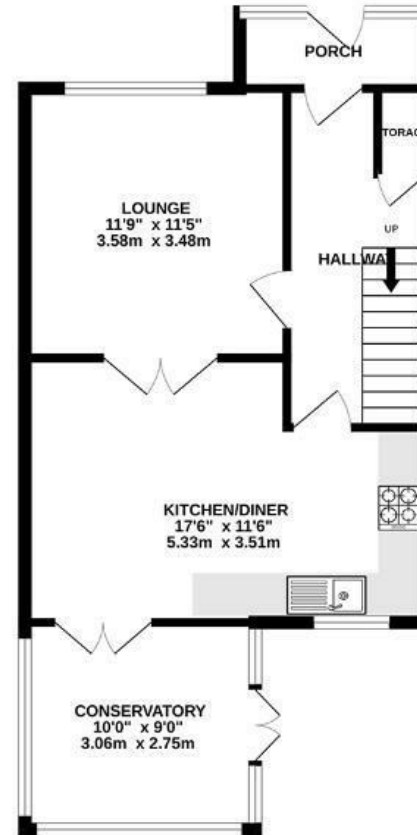
# Shipham Close

## WHITCHURCH

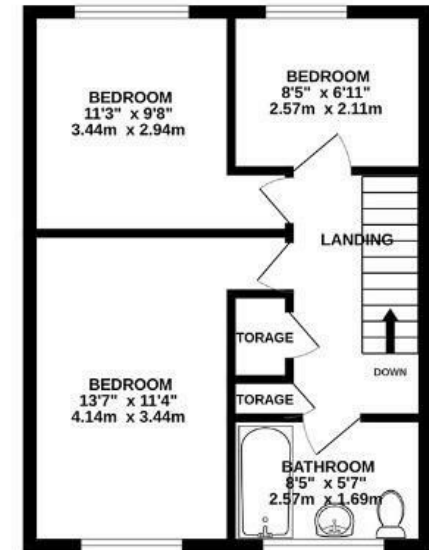
APPROXIMATE FLOOR AREA  
85.7 SQM / 923 SQFT



GROUND FLOOR



FIRST FLOOR



Boardwalk

# Shipham Close

WITCHURCH, BRISTOL



£270,000



3 Bedrooms



BS14 9LU



1 Bathrooms

*"This was our first home together, where we've since welcomed two daughters and a dog. Throughout these changes, the street has always felt very neighbourly and friendly. We have loved our large, open-plan kitchen/dining area, which has been great for hosting friends and family."*

