

Boardwalk

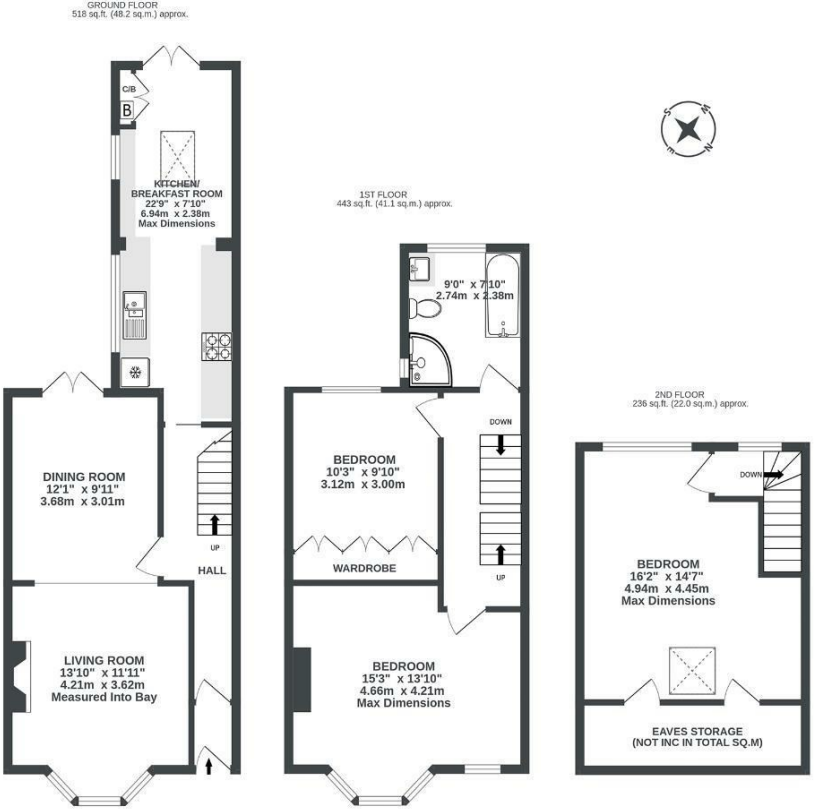
Almorah Road

, BRISTOL

Almorah Road

VICTORIA PARK

APPROXIMATE FLOOR AREA
111.2 SQM / 1197 SQFT



Illustrations are for reference purposes only, measurements are approximate, not to scale.

Boardwalk

Almorah Road

, BRISTOL



£550,000



BS3 4QQ



3 Bedrooms



1 Bathrooms

"We're really going to miss our home on Almorah Road: morning coffee in the light-filled kitchen, the hum of bees in the summertime garden, watching sunsets and fiesta balloons from the top floor window. And the original parquet! So much love went into restoring that wooden floor – its warm glow will be missed. Our neighbours on Almorah Road are super-friendly – there's a real sense of community here. And best of all, we've had the fantastic Victoria Park on our doorstep, which has been brilliant for dog-walking, and enjoying the green space all year round."

