

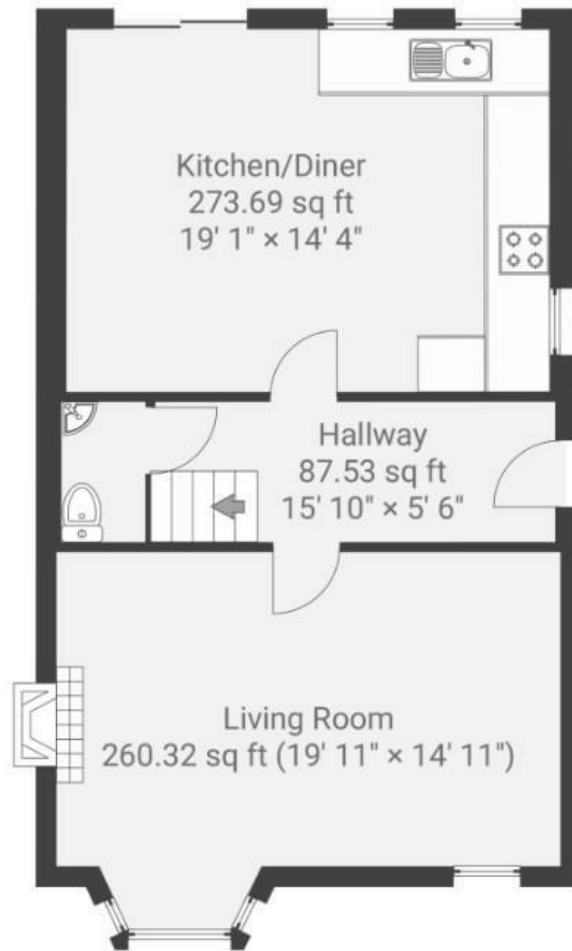
Grove Road

FISHPONDS

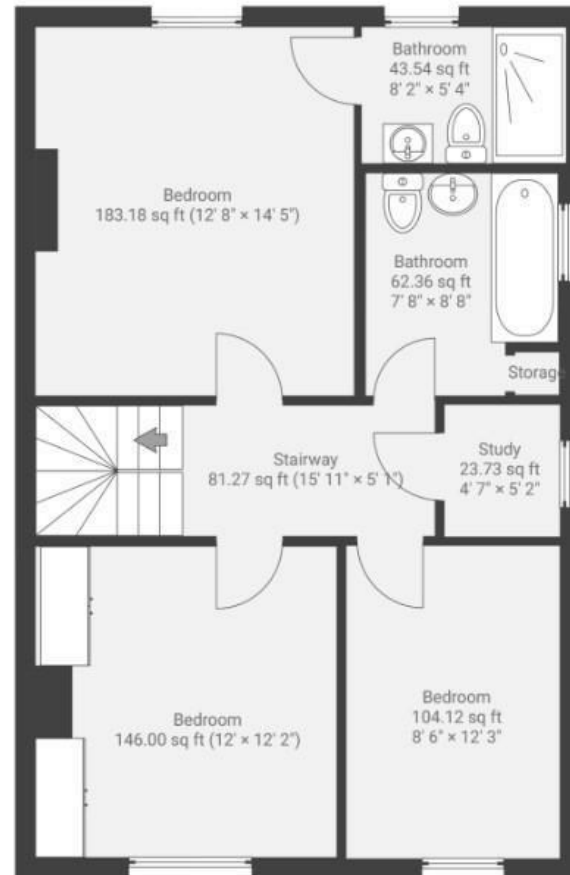
APPROXIMATE FLOOR AREA
115.0 SQM / 1237 SQFT



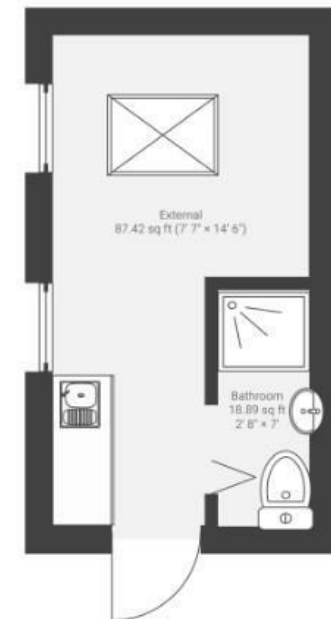
GROUND FLOOR



FIRST FLOOR



EXTERNAL



Illustrations are for reference purposes only, measurements are approximate, not to scale.

Boardwalk

Grove Road

FISHPONDS, BRISTOL



£500,000



3 Bedrooms



BS16 2BH



2 Bathrooms

"We love our home: the peaceful garden enclave, the spaciousness, how it lends itself to hosting. Warm and cosy in the winter, and wonderfully bright in the summer. This has been a special, happy place to raise our young family."

