

Boardwalk

# Harroldene

, BRISTOL

Harroldene Road  
KNOWLE

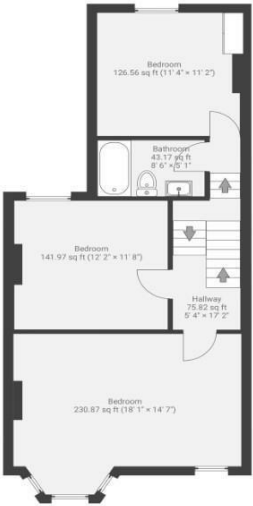
APPROXIMATE FLOOR AREA  
141.2 SQM / 1520 SQFT



GROUND FLOOR



FIRST FLOOR



SECOND FLOOR



Illustrations are for reference purposes only, measurements are approximate, not to scale.



Boardwalk

# Harrowdene

, BRISTOL



£625,000



5 Bedrooms



BS4 2JL



3 Bathrooms

*" We moved to Harrowdene in summer 2021, when I was pregnant with our son. We have absolutely loved the area. The area - and the street, in particular - has many young families, so lots of likeminded people who are now friends. The area has changed so much in 4 years with loads more foodie places - we love visiting BANK, Bruhaha and Fox & West. We're sad to leave but are moving away from Bristol to be closer to family. "*

