

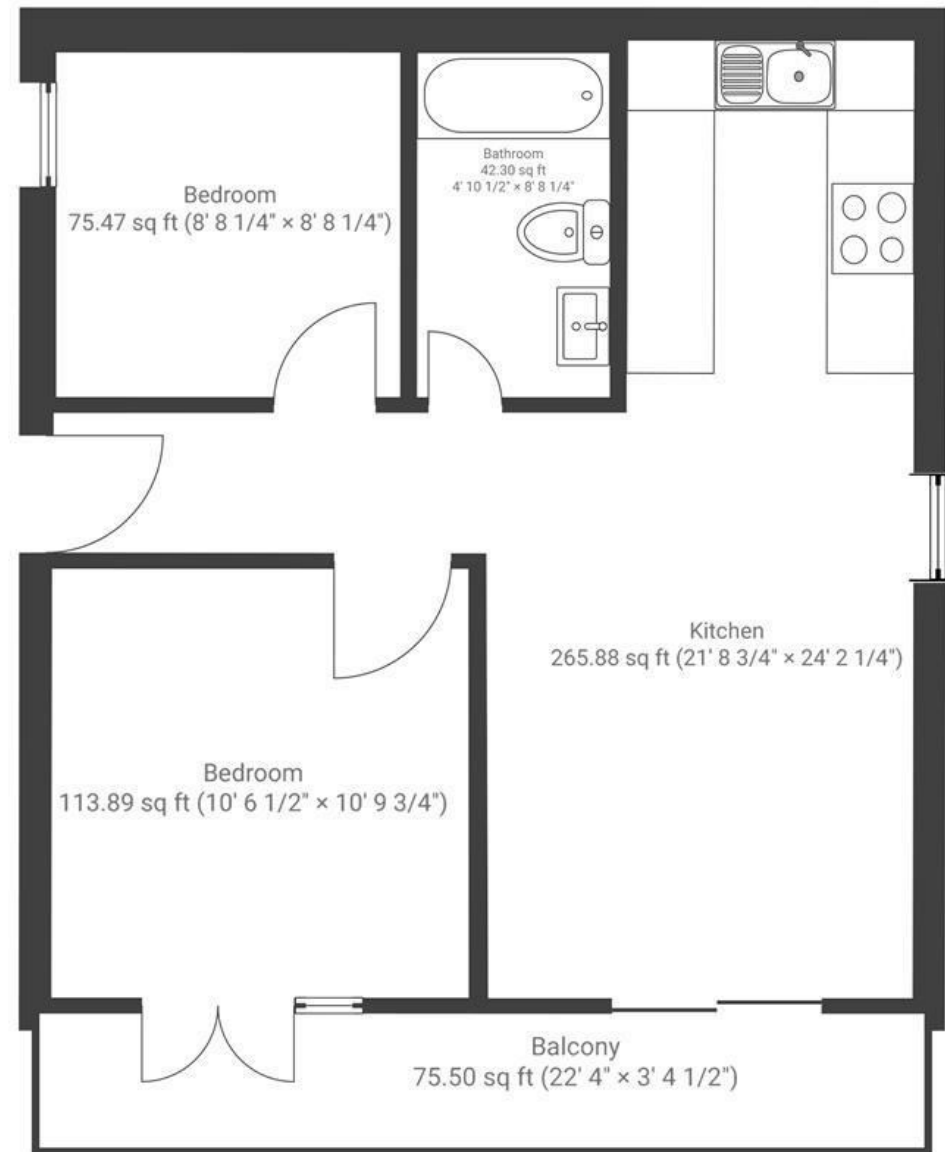
# Niblets Hill

## ST GEORGE

APPROXIMATE FLOOR AREA  
46.4 SQM / 500 SQFT



### FIRST FLOOR



**Boardwalk**

# Niblets Hill

ST GEORGE,



£245,000



2 Bedrooms



BS5 8BH



1 Bathrooms

*"The three flats have high quality finishes throughout. It has high quality finishes throughout the whole property. Each flat has two bedrooms, open plan kitchen/dining/lounge and a bathroom. All flats have an independent entrance and a dedicated off-road parking space. All flats have an external space in the form of a balcony with glass balustrades (the ground floor flat just has a porch area). It is a warm minimalist design of wood and black accessories. There is laminate floor in the kitchen/diner, ceramic tiles in the bathrooms and carpet in the bedrooms. The kitchen has a full size washer/dryer, dishwasher, cooker and fridge freezer. The bathroom has a shower over a bath with a glass door."*

