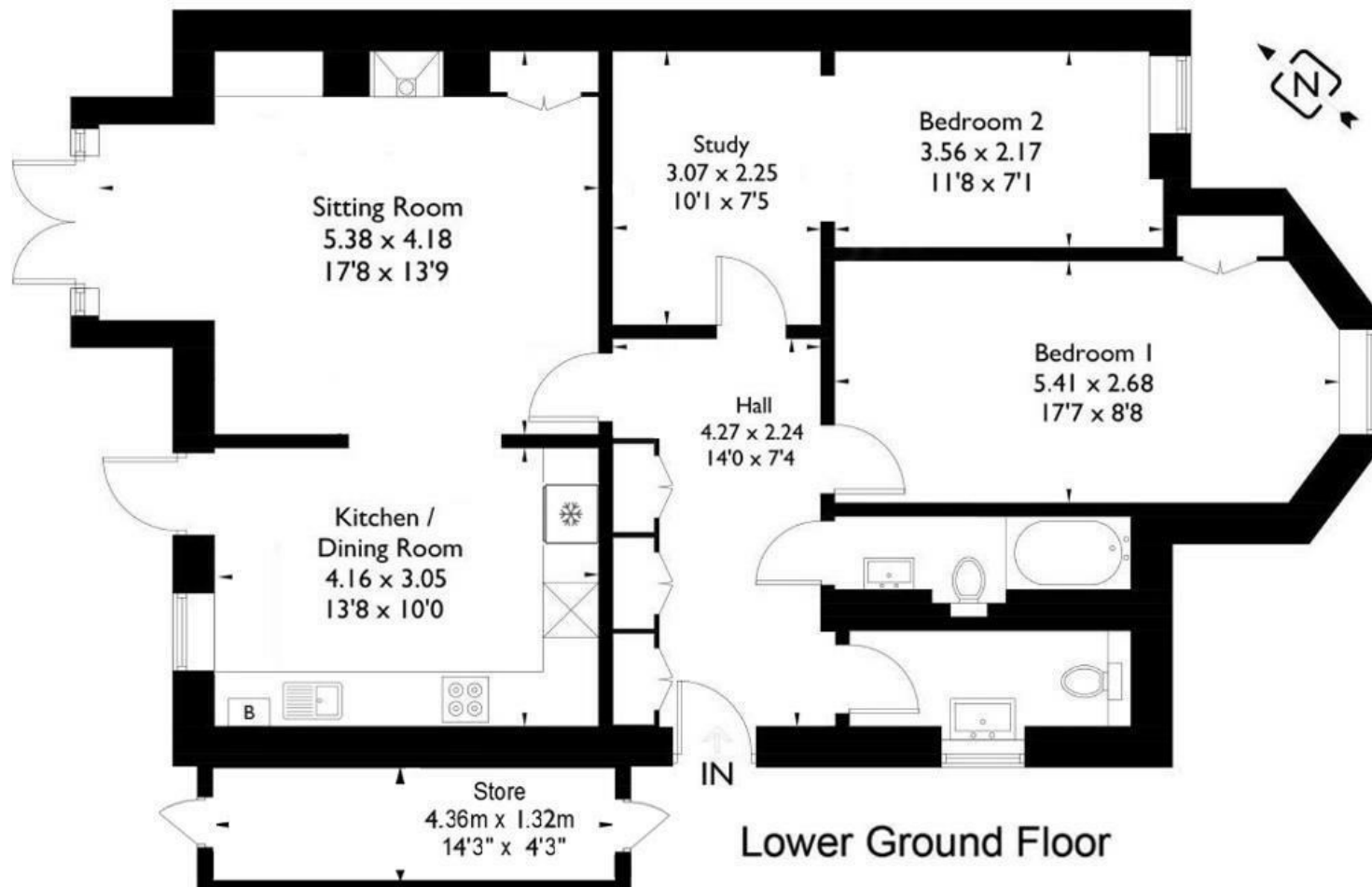


# Waverley Road

C O T H A M

APPROXIMATE FLOOR AREA  
83.6 SQM / 900 SQFT



Illustrations are for reference purposes only, measurements are approximate, not to scale.

**Boardwalk**

# Waverley Road

COTHAM, BRISTOL

£

£525,000



BS6 6ES

z z z

2 Bedrooms



2 Bathrooms

*"We love the cosy winters by the wood burner, french doors onto the terrace and leafy, well-stocked garden with the old apple tree (delicious crumbles and chutneys), climbing roses and wisteria and in the background the sound of wood pigeons and rumble of the local single-track train. There are friendly summer street parties nearby including at the lovely (now pedestrian) Cotham Hill a few minutes walk away with the award-winning Panunzio's Kitchen Gelati, FED and One B cafes, Bravas and Muino Tapas, Pullins Bakery, a useful hardware store, chemist and post office, not to mention Snobby's Wine Bar in Chandos Road, walks on The Downs, Burra and Wild Oats being favourite places."*

