

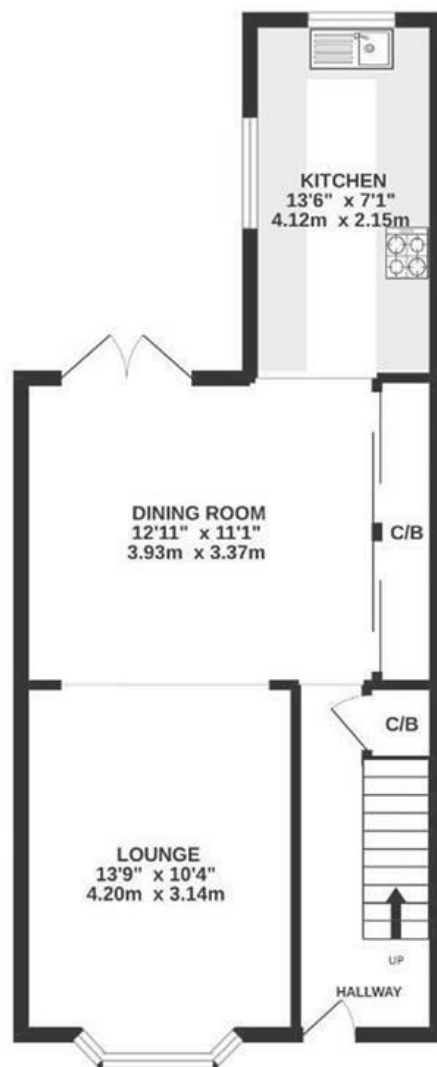
# Park Avenue

## ST GEORGE

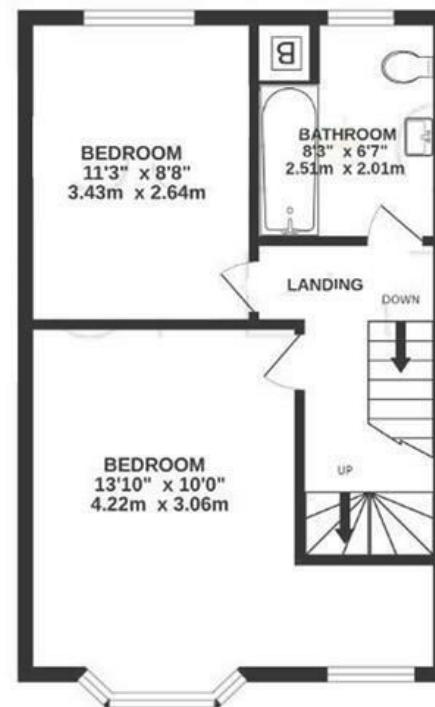
APPROXIMATE FLOOR AREA  
112 SQM / 1212 SQFT



GROUND FLOOR



1ST FLOOR



2ND FLOOR



Boardwalk

# Park Avenue

ST. GEORGE, BRISTOL

£

£475,000



BS5 7JB

zzz

3 Bedrooms



2 Bathrooms

*"We have loved living on Park Avenue. It's such a luxury to be able to walk to the park or shops on Church Road in just a few minutes! You can see the park from the master bedroom, and we have loved opening the blinds to enjoy such an amazing green space so close - you can even hear the owls in the park at night. The downstairs space is open and light, and has been perfect for raising our now two-year-old."*

