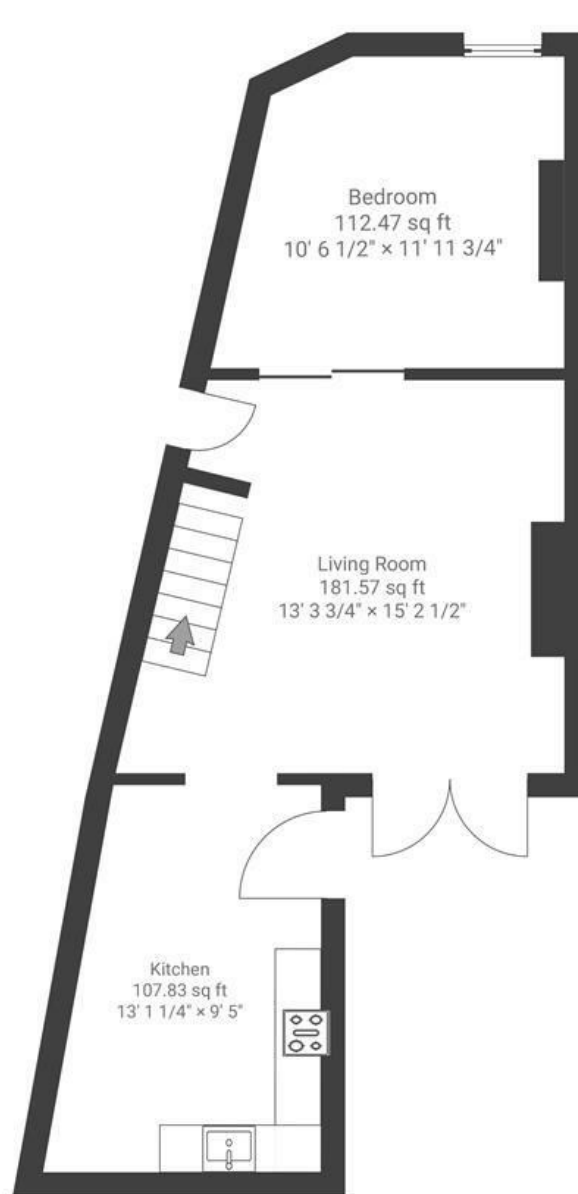


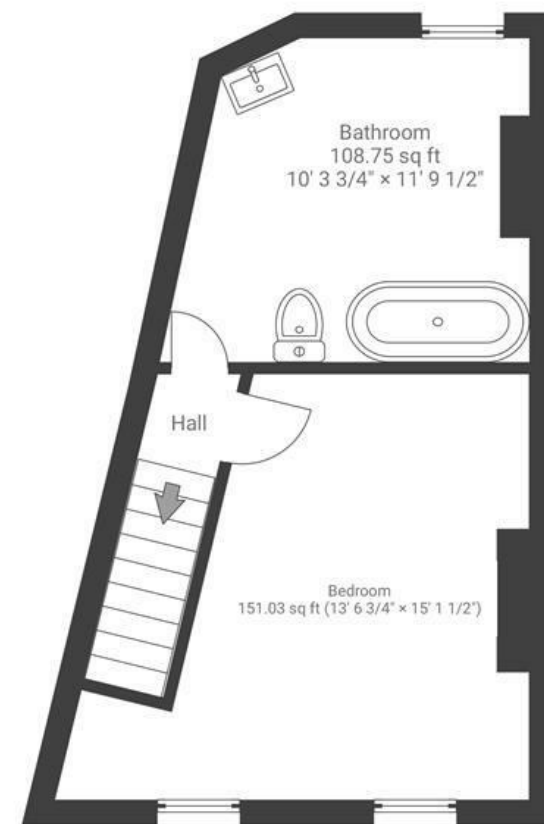
Dunmore Street

TOTTERDOWN

APPROXIMATE FLOOR AREA
65.54 SQM / 705.49 SQFT



GROUND FLOOR



FIRST FLOOR

Boardwalk

Dunmore Street , BRISTOL

£

£350,000

zzz

2 Bedrooms



BS4 2BQ



1 Bathrooms

"Totterdown is quiet, friendly, green and artistic. We've loved the open mics at the Oxford, getting to know local artists over mince pies and mulled wine in the Totterdown Arts Trail, and meeting friends for a picnic in Victoria Park. On cosy winter nights, the fire blazes at the heart of the home and warms the whole house. The bedroom windows look out over the colourful Totterdown terraces and it feels like living in the soul of Bristol - you can even see the balloons flying over town!"

