

Boardwalk

William Street

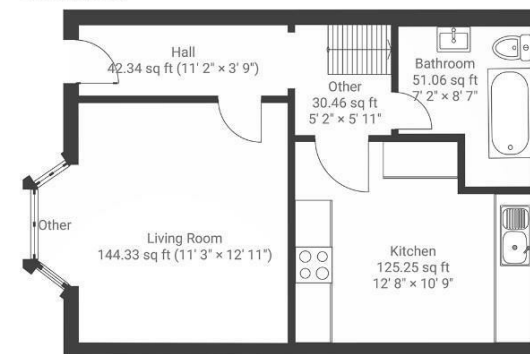
TOTTERDOWN, BRISTOL

William Street TOTTERDOWN

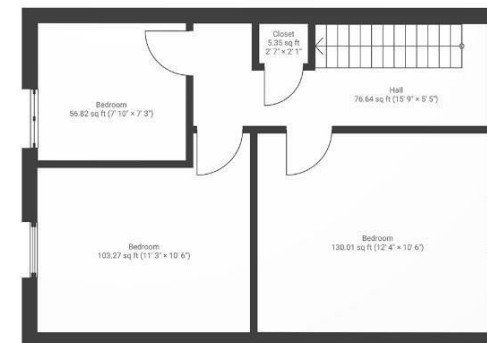
APPROXIMATE FLOOR AREA
72 SQM / 775 SQFT



GROUND FLOOR



FIRST FLOOR



Boardwalk

William Street

TOTTERDOWN, BRISTOL

£

£350,000



BS3 4TX

zzz

3 Bedrooms



1 Bathrooms

"From the moment we arrived in Totterdown, neighbours welcomed us in and there was an immediate sense of community. It's a peaceful road and the area has everything you need on your doorstep. Victoria Park has felt like our own public garden; ideal for dog walks, yoga and BBQ's with friends. We will really miss treating ourselves to a fresh loaf from the local bakery and popping into The Oxford for a pint and a game of scrabble! It's been the perfect mix of green space, convenience and neighborly spirit"

