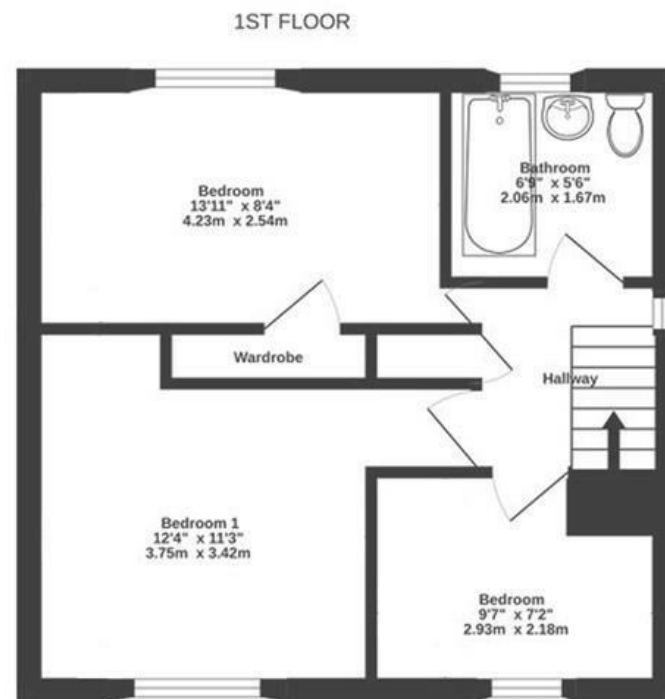
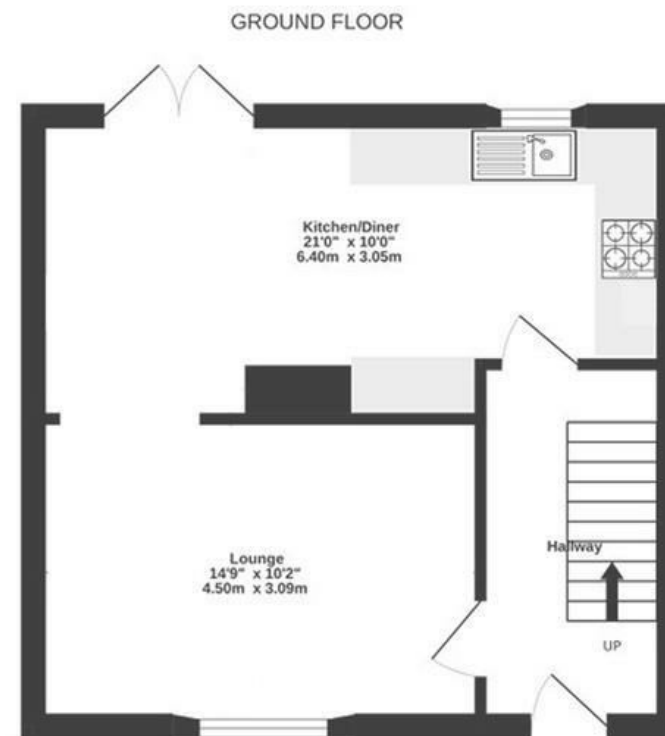


Sheppard Road

FISHPONDS

APPROXIMATE FLOOR AREA
89.2 SQM / 961 SQFT



Boardwalk

Sheppard Road

FISHPONDS, BRISTOL



£340,000



3 Bedrooms



BS16 2PF



1 Bathrooms

"The house has been completely rebuilt and rewired. It has been a successful rental property with everything you need within walking distance. The house also has a large plot of land on the side you can either turn it into a garden or sell it if you wish."

