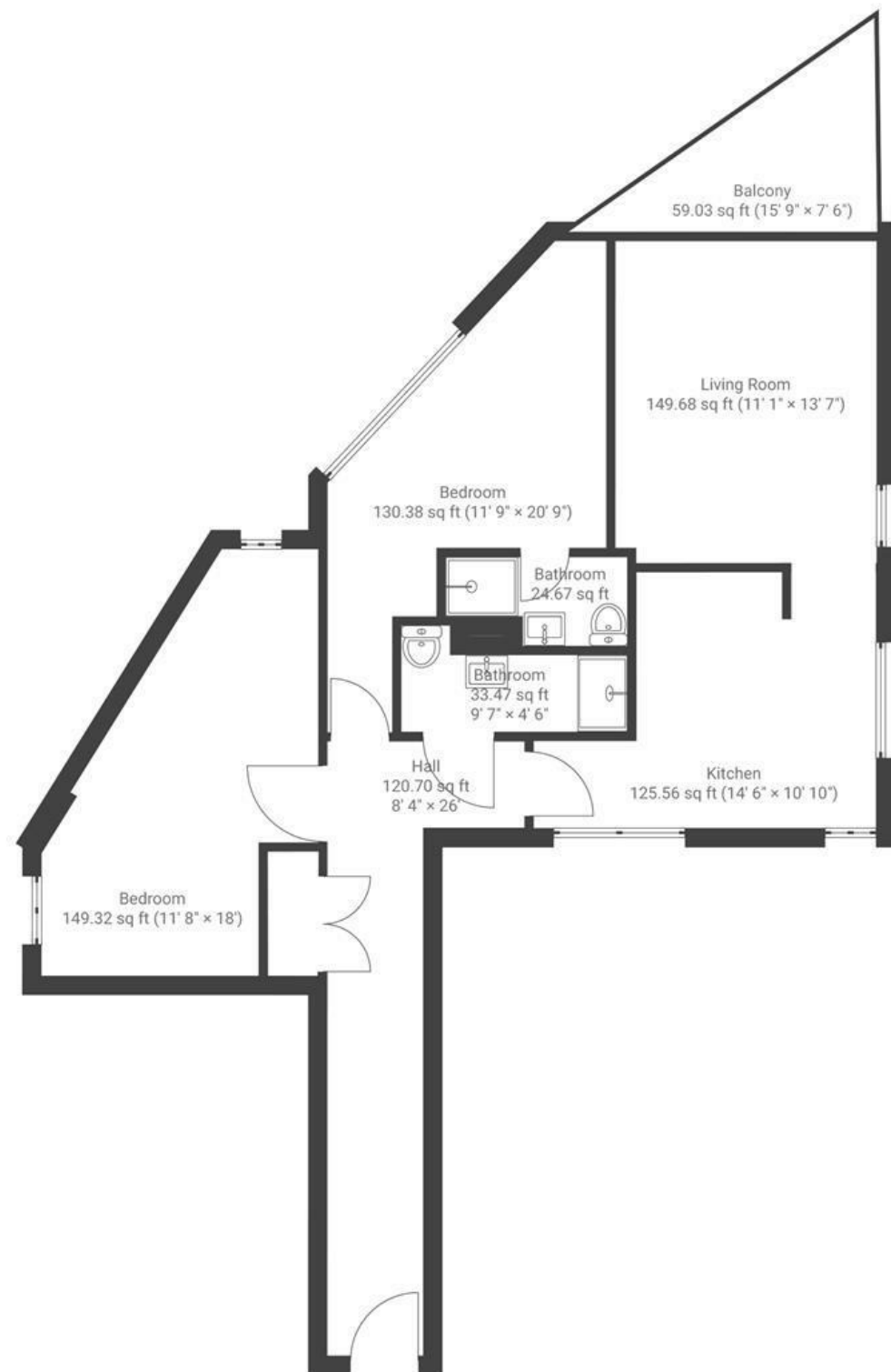


Waverley House

CITY CENTRE

APPROXIMATE FLOOR AREA
78 SQM / 840 SQFT



Boardwalk

Cathedral Walk , BRISTOL



£250,000



2 Bedrooms



BS1 5LW



2 Bathrooms

"I love how vibrant the area feels, with the river just outside and everything we need close by. The flat itself has such a nice flow, from the kitchen into the living room and then straight out onto the balcony."

