

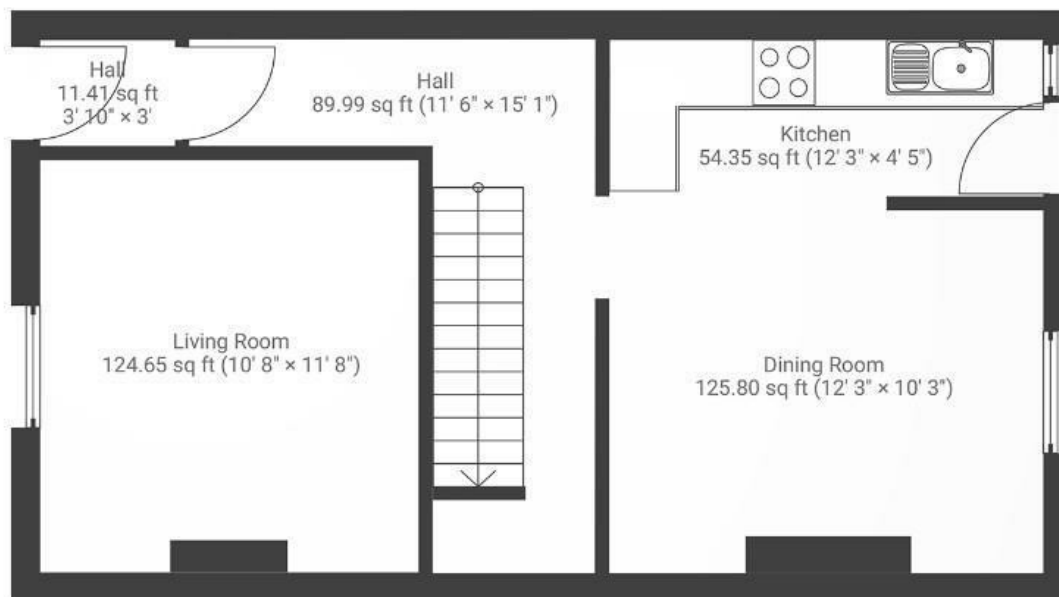
Southey Street

ST. WERBURGH

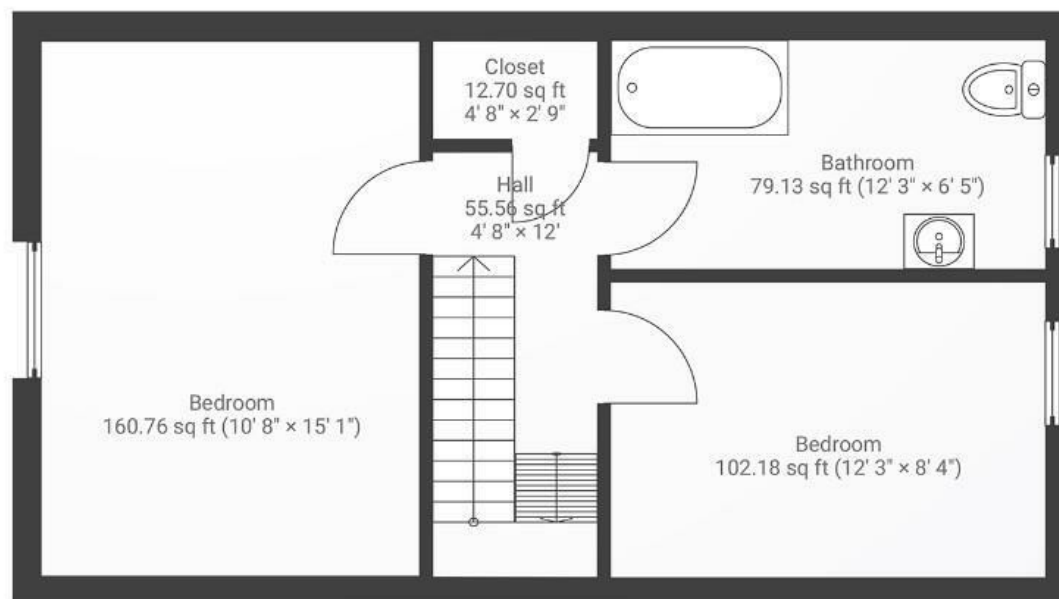
APPROXIMATE FLOOR AREA
76 SQM / 816 SQFT



GROUND FLOOR



FIRST FLOOR



Boardwalk

Southey Street , BRISTOL

£

£435,000



BS2 9RE

zzz

2 Bedrooms



1 Bathrooms

"I was looking for a quiet cosy house, but still close to the action, and this one ticked all the boxes. There are so many great pubs, cafes and restaurants within walking distance; Bianchis on Picton St is a particular favourite. There are many green spaces nearby, but the garden is a lovely peaceful space to relax and dine alfresco on the raised decking."

